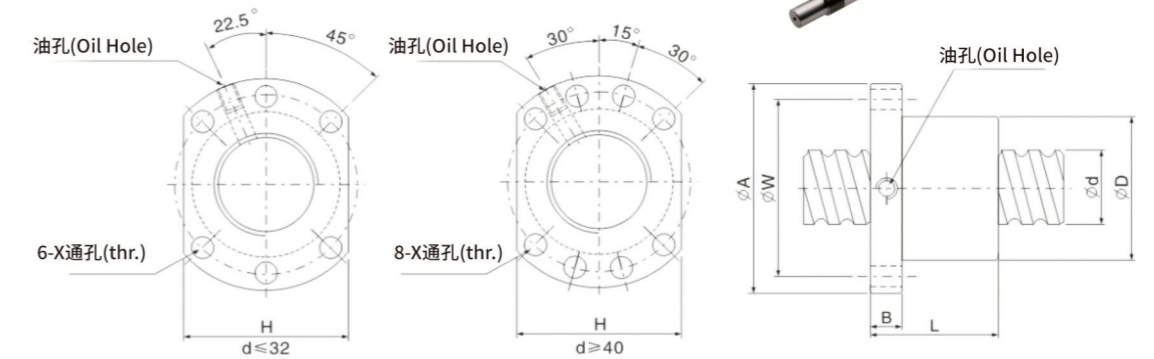


精密滚珠丝杆系列
 Ball and steel rod series

SFT	R	025	05	B2	D	G	C5	P0	1000
									螺杆菌全长 (mm) Overall length of shaft (mm)
									轴方向间隙预压等级 Axial clearance and preload code P0、P1、P2、P3、P4
									导程精度等级 Accuracy grade code C0、C1、C2、C3、C5、C7、C10
									制程代号 Produce code G:研磨 F: 转造 G: Grinding F: Rolled
									法兰型式 Flange type N: 无切边 S: 单切边 D: 双切边 N: Not cutting S: Single cutting D: Double cutting
									珠卷数(卷数x列数) No. of Turn (Circuits) or Turn x Row 卷数: T: 1 (or 0.7) A: 1.5 (or 1.7) B: 2.5 C: 3.5 例: (B2=2.5x2) (Turn) ex
									导程 (mm) Lead (mm)
									螺杆菌外径 (mm) Shaft dia. (mm)
									螺纹方向 Direction of helix R: 右 L: 左 R: Right L: Left
									螺帽型号 Nut type codes S: S: 单螺帽 Single nut D: 双螺帽 Double nut F: F: 有法兰 With flange C: 无法兰 Without flange T: T: T型螺帽 T type nut I: I型螺帽 I type nut D: D型螺帽 D type nut E: E型螺帽 E type nut K: K型螺帽 K type nut U: DIN规格螺帽 DIN nut S: 间行化 (SFI、DFI、SFT、DFT、SFE、SFK)

SFS(DIN69051Form B)滚珠螺杆规格表
 Dimension Table of SFS(DIN 69051 Form B)Ball Screws



l: 导程 Lead Da: 珠径 Ball Dia. n: 珠圈数 Number of Circuits K: 刚性 Stiffness (Kgf/um)
 Ca: 动额定负荷 Basic Dynamic Rating Load (Kgf) Coa: 静额定负荷 Basic Static Rating Load (Kgf)

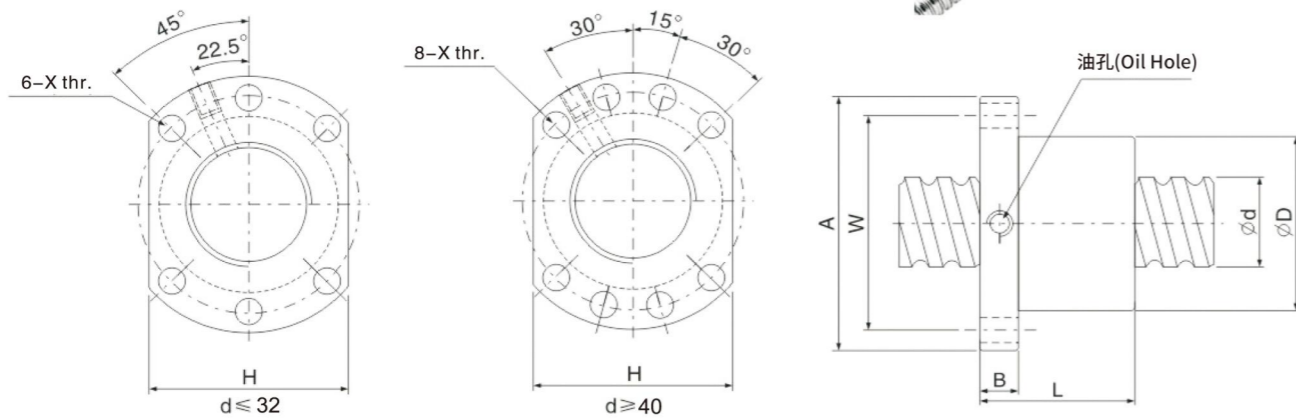
单位: mm

型号 Model No.	滚珠螺杆、螺帽之基准数据 Dimensions											额定载荷 (Load Rating)		K	
	d	l	Da	D	A	B	L	W	H	X	Q	n	Ca		Coa
SFS01205-2.8	12	5	2.5	24	40	10	31	32	30	4.5	M6*1P	2.8*1	536	794	12.5
SFS01605-3.8		5	2.778	28	48	10	38	38	40	5.5	M6*1P	3.8*1	771	1536	19.6
SFS01610-2.8		10	2.778	28	48	10	47	38	40	5.5	M6*1P	2.8*1	592.9	1131.8	14.4
SFS01616-1.8		16	2.778	28	48	10	45	38	40	5.5	M6*1P	1.8*1	405.5	727.6	9.2
SFS01616-2.8		16	2.778	28	48	10	61	38	40	5.5	M6*1P	2.8*1	592.9	1131.8	14.4
SFS01620-1.8		20	2.778	28	48	10	57	38	40	5.5	M6*1P	1.8*1	415.2	768	9.2
SFS02005-3.8		5	3.175	36	58	10	40	47	44	6.6	M6*1P	3.8*1	1027.1	2229.4	25.9
SFS02010-3.8		10	3.175	36	58	10	60	47	44	6.6	M6*1P	3.8*1	1049.1	2340.9	25.9
SFS02020-1.8		20	3.175	36	58	11	57	47	44	6.6	M6*1P	1.8*1	551.9	1108.8	12.2
SFS02020-2.8		20	3.175	36	58	11	77	47	44	6.6	M6*1P	2.8*1	87	1724.8	19.1
SFS02505-3.8		5	3.175	40	62	10	40	51	48	6.6	M6*1P	3.8*1	1133.1	2786.7	32
SFS02510-3.8		10	3.175	40	62	12	62	51	48	6.6	M6*1P	3.8*1	1133.1	2786.7	32
SFS02525-1.8		25	3.175	40	62	12	70	51	48	6.6	M6*1P	1.8*1	606.3	1372.8	15.1
SFS02525-2.8		25	3.175	40	62	12	95	51	48	6.6	M6*1P	2.8*1	886.5	2135.5	23.6
SFS03205-3.8		5	3.175	50	80	12	42	65	62	9	M6*1P	3.8*1	1263.1	3567	40.6
SFS03210-3.8		10	3.969	50	80	13	62	65	62	9	M6*1P	3.8*1	1693.4	4354.9	39.7
SFS03220-2.8		20	3.969	50	80	12	80	65	62	9	M6*1P	2.8*1	1324.9	3337.2	29.3
SFS03232-1.8		32	3.969	50	80	13	84	65	62	9	M6*1P	1.8*1	906	2145.5	18.8
SFS03232-2.8		32	3.969	50	80	13	116	65	62	9	M6*1P	2.8*1	1324.9	3337.2	29.3
SFS04005-3.8		5	3.175	63	93	15	45	78	70	9	M8*1P	3.8*1	1393.4	4458.8	50.5
SFS04010-3.8		10	6.35	63	93	14	63	78	70	9	M8*1P	3.8*1	3496.9	8471.8	49.3
SFS04020-2.8		20	6.35	63	93	14	82	78	70	9	M8*1P	2.8*1	2750.6	6570.9	36.3
SFS04040-1.8		40	6.35	63	93	14	105	78	70	9	M8*1P	1.8*1	1881	4224.1	23.3
SFS04040-2.8		40	6.35	63	93	14	145	78	70	9	M8*1P	2.8*1	2750.6	6570.9	36.3
SFS05005-3.8		5	3.175	75	110	15	45	93	85	11	M8*1P	3.8*1	1537.1	5573.5	62.8
SFS05010-3.8		10	6.35	75	110	18	68	93	85	11	M8*1P	3.8*1	3875.4	10701.2	61.6
SFS05020-3.8		20	6.35	75	110	18	108	93	85	11	M8*1P	3.8*1	3945.7	11147.1	61.6
SFS05050-1.8		50	6.35	75	110	18	125	93	85	11	M8*1P	1.8*1	2111.2	5491.4	29.2
SFS05050-2.8		50	6.35	75	110	18	175	93	85	11	M8*1P	2.8*1	3087.1	8542.2	45.4
SFS06310-3.8		10	6.35	90	125	18	70	108	95	11	M8*1P	3.8*1	4147.4	12484.8	77.6
SFS06320-3.8		20	7.144	95	135	20	116	115	100	13.5	M8*1P	3.8*1	4877.8	14109.1	77.9
SFS08010-3.8		10	6.35	105	145	20	70	125	110	13.5	M8*1P	3.8*1	4632.4	16051.9	97.3
SFS08020-3.8		20	9.525	125	165	25	120	145	130	13.5	M8*1P	3.8*1	7891.4	23074.6	98.6
SFS010020-3.8		20	12.7	150	202	30	124	176	155	17.5	M8*1P	3.8*1	12725.1	37454.4	123.3

Ca Coa: 载荷单位: kgf 1kgf=9.8N

备注: 有标注★记号者可制作左螺紋 Note: with sign can produce left helix

SFU(DIN 69051 Form B)滚珠螺杆规格表
 Dimension Table of SFU(DIN69051 Form B)Ball Screws



l:导程 Lead Da: 珠径Ball Dia. n: 珠圈数Number of Circuits K: 刚性 Stiffness(Kgf/um)
 Ca: 动额定负荷 Basic Dynamic Rating Load(Kgf) Coa: 静额定负荷 Basic Static Rating Load(Kgf)

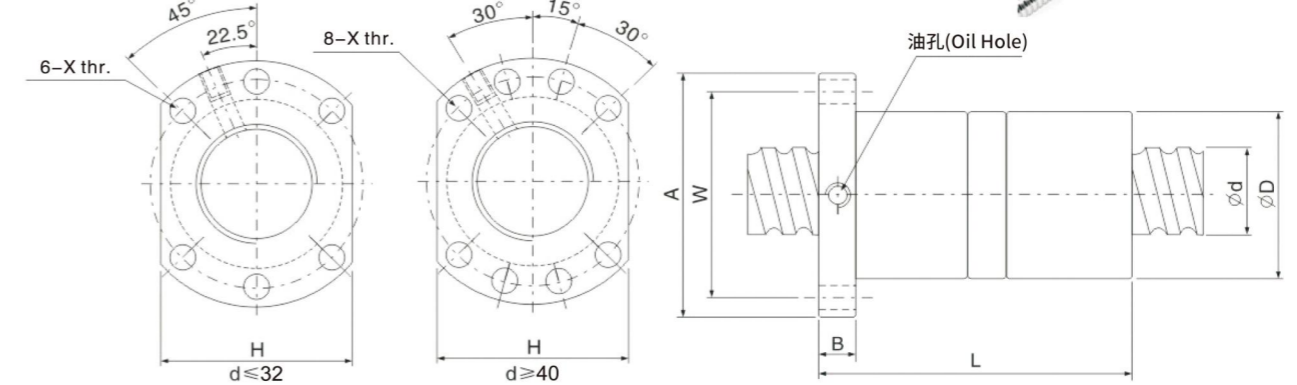
单位: mm

型号 Model No.	滚珠螺杆、螺帽之基准数据 Dimensions														额定载荷 (Load Rating)		K
	d	l	Da	D	A	B	L	W	H	X	Q	n	Ca	Coa			
SFU1204-4	12	4	2.381	24	40	10	40	32	30	4.5		1*4	593	1129	12.5		
★ SFU1604-4	16	4	2.381	28	48	10	40	38	40	5.5	M6	1*4	629	1270	35		
★ SFU1605-4		5	3.175	28	48	10	50	38	40	5.5	M6	1*4	780	1790	20		
★ SFU1610-3	20	10	3.175	28	48	10	57	38	40	5.5	M6	1*3	721	1249	15		
SFU2004-4		4	2.381	36	58	10	42	47	44	6.6	M6	1*4	699	1617	41		
SFU2005-4	25	5	3.175	36	58	10	51	47	44	6.6	M6	1*4	1130	2380	25		
SFU2504-4		4	2.381	40	62	10	42	51	48	6.6	M6	1*4	777	2052	48		
★ SFU2505-4	32	5	3.175	40	62	10	51	51	48	6.6	M6	1*4	1280	3110	35		
SFU2506-4		6	3.969	40	62	10	54	51	48	6.6	M6	1*4	1528	3284	40		
SFU2508-4	40	8	4.762	40	62	10	63	51	48	6.6	M6	1*4	1941	3863	38		
★ SFU2510-4		10	4.762	40	62	12	85	51	48	6.6	M6	1*4	1944	3877	33		
SFU3204-4	50	4	2.381	50	80	12	44	65	62	9	M6	1*4	871	2661	56		
★ SFU3205-4		5	3.175	50	80	12	52	65	62	9	M6	1*4	1450	4150	40		
SFU3206-4	63	6	3.969	50	80	12	57	65	62	9	M6	1*4	1720	4298	47		
SFU3208-4		8	4.762	50	80	12	65	65	62	9	M6	1*4	2189	5079	44		
★ SFU3210-4	80	10	6.350	50	80	12	90	65	62	9	M6	1*4	3390	7170	79		
★ SFU4005-4		5	3.175	63	93	14	55	78	70	9	M8	1*4	1610	5330	49		
SFU4006-4	100	6	3.969	63	93	14	60	78	70	9	M6	1*4	1911	5458	55		
SFU4008-4		8	4.762	63	93	14	67	78	70	9	M6	1*4	2435	6469	52		
★ SFU4010-4	125	10	6.350	63	93	14	93	78	70	9	M8	1*4	3910	9520	50		
SFU5010-4		10	6.350	75	110	16	93	93	85	11	M8	1*4	4450	12500	65		
★ SFU5020-4	150	20	7.144	75	110	16	138	93	85	11	M8	1*4	4644	14327	59.5		
★ SFU6310-4		10	6.350	95	125	18	98	108	95	11	M8	1*4	5070	16600	80		
SFU6320-4	175	20	9.525	95	135	20	149	115	100	13.5	M8	1*4	7573	23860	84.1		
★ SFU8010-4		10	6.350	105	145	20	98	125	110	13.5	M8	1*4	5620	21300	90		
SFU8020-4	225	20	9.525	125	165	25	154	145	130	13.5	M8	1*4	8485	30895	84.1		
SFU10020-4		20	9.525	150	202	30	180	170	155	17.5	M8	1*4	9420	39183	110.1		

Ca Coa: 载荷单位: kgf 1kgf=9.8N

备注: 有标注★记号者可制作左螺纹 Note: with sign can produce left helix

DFU (DIN69051 Form B) 系列规格
 DFU (DIN69051 Form B) Series Specifications



l: 导程 Lead Da: 珠径 Ball Dia. n: 珠圈数 Number of Circuits K: 刚性 Stiffness(Kgf/um)
 Ca: 动额定负荷 Basic Dynamic Rating Load(Kgf) Coa: 静额定负荷 Basic Static Rating Load(Kgf)

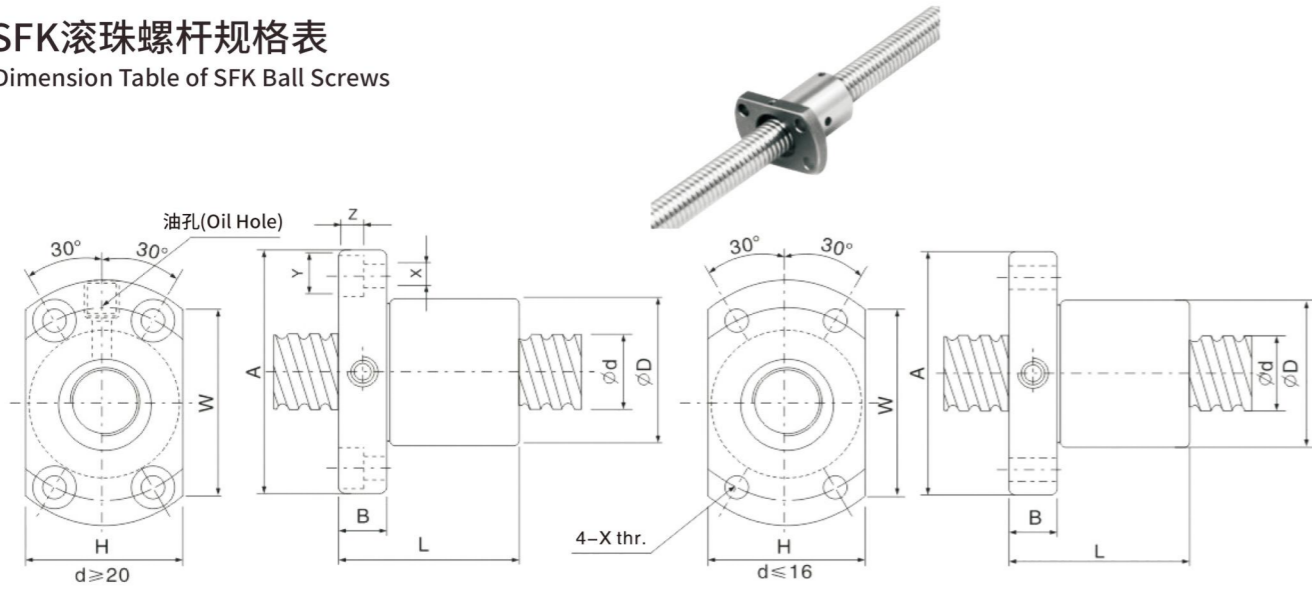
单位: mm

型号 Model No.	滚珠螺杆、螺帽之基准数据 Dimensions														额定载荷 (Load Rating)		K
	d	l	Da	D	A	B	L	W	H	X	Q	n	Ca	Coa			
★ DFU1604-4	16	4	2.381	28	48	10	80	38	40	5.5	M6	1*4	629	1270	35		
★ DFU1605-4		5	3.175	28	48	10	100	38	40	5.5	M6	1*4	780	1790	20		
★ DFU1610-3	20	10	3.175	28	48	10	118	38	40	5.5	M6	1*3	721	1249	15		
DFU2004-4		4	2.381	36	58	10	80	47	44	6.6	M6	1*4	699	1617	41		
★ DFU2005-4	25	5	3.175	36	58	10	101	47	44	6.6	M6	1*4	1130	2380	25		
DFU2504-4		4	2.381	40	62	10	80	51	48	6.6	M6	1*4	777	2032	48		
DFU2505-4	32	5	3.175	40	62	10	101	51	48	6.6	M6	1*4	1280	3110	35		
DFU2506-4		6	3.969	40	62	10	105	51	48	6.6	M6	1*4	1528	3284	40		
DFU2508-4	40	8	4.762	40	62	10	120	51	48	6.6	M6	1*4	1941	3863	38		
★ DFU2510-4		10	4.762	40	62	12	145	51	48	6.6	M6	1*4	1944	3877	33		
DFU3204-4	50	4	2.381	50	80	12	80	65	62	9	M6	1*4	871	2661	56		
★ DFU3205-4		5	3.175	50	80	12	102	65	62	9	M6	1*4	1450	4150	40		
DFU3206-4	63	6	3.969	50	80	12	105	65	62	9	M6	1*4	1720	4298	47		
DFU3208-4		8	4.762	50	80	12	122	65	62	9	M6	1*4	2189	5079	44		
DFU3210-4	80	10	6.350	50	80	12	162	65	62	9	M6	1*4	3390	7170	79		
DFU4005-4		5	3.175	63	93	14	105	78	70	9	M8	1*4	1610	5330	49		
DFU4006-4	100	6	3.969	63	93	14	108	78	70	9	M6	1*4	1911	5458	55		
DFU4008-4		8	4.762	63	93	14	132	78	70	9	M6	1*4	2435	6469	52		
★ DFU4010-4	125	10	6.350	63	93	14	165	78	70	9	M8	1*4	3910	9520	50		
DFU5010-4		10	6.350	75	110	16	171	93	85	11	M8	1*4	4450	12500	65		
★ DFU5020-4	150	20	7.144	75	110	16	280	93	85	11	M8	1*4	4644	14327	59.5		
★ DFU6310-4		10	6.350	95	125	18	182	108	95	11	M8	1*4	5070	16600	80		
DFU6320-4	175	20	9.525	95	135	20	290	115	100	13.5	M8	1*4	7573	23860	84.1		
★ DFU8010-4		10	6.350	105	145	20	182	125	110	13.5	M8	1*4	5620	21300	90		
DFU8020-4	225	20	9.525	125	165	25	295	145	130	13.5	M8	1*4	8485	30895	84.1		
DFU10020-4		20	9.525	150	202	30	340	170	155	17.5	M8	1*4	9420	39183	300		

Ca Coa: 载荷单位: kgf 1kgf=9.8N

备注: 有标注★记号者可制作左螺纹 Note: with sign can produce left helix

SFK滚珠螺杆规格表
 Dimension Table of SFK Ball Screws



l:导程 Lead Da: 珠径Ball Dia. n: 珠圈数Number of Circuits K: 刚性 Stiffness(Kgf/um)
 Ca: 动额定负荷 Basic Dynamic Rating Load(Kgf) Coa: 静额定负荷 Basic Static Rating Load(Kgf)

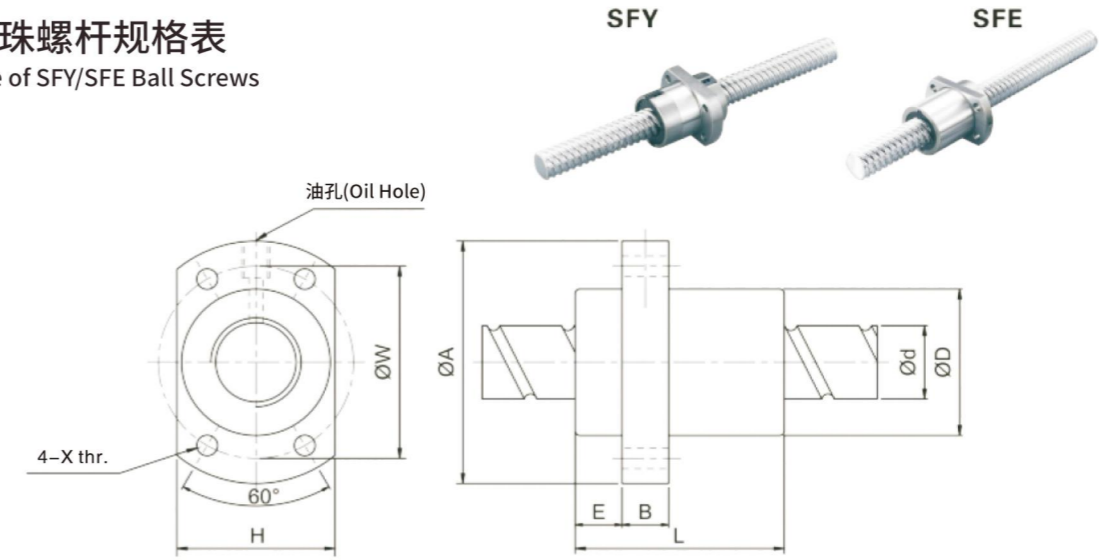
单位: mm

型号 Mode I No.	滚珠螺杆、螺帽之基准数据 Dimensions														额定载荷 (Load Rating)		K
	d	l	Da	D	A	B	L	W	H	X	Y	Z	Q	n	Ca	Coa	
★ SFK0401	4	1	0.8	10	20	3	12	15	14	2.9	-	-	-	1*2	40	51	2.8
★ SFK0601	6	1	0.8	12	24	3.5	15	18	16	3.4	-	-	-	1*3	73	121	6.8
★ SFK0801	8	1	0.8	14	27	4	16	21	18	3.4	-	-	-	1*4	93	173	10.7
★ SFK0802		2	1.2	14	27	4	16	21	18	3.4	-	-	-	1*3	135	225	8.2
★ SFK0825		2.5	1.2	16	29	4	26	23	20	3.4	-	-	-	1*3	177	278	8.2
★ SFK1002	10	2	1.2	18	35	5	28	27	22	4.5	-	-	-	1*3	185	305	10.1
★ SFK1004		4	2	26	46	10	34	36	28	4.5	-	-	-	1*3	395	590	10.4
★ SFK1202	12	2	1.2	20	37	5	28	29	24	4.5	-	-	-	1*4	173	317	16.1
★ SFK1204		4	2.5	24	40	6	28	32	25	3.5	-	-	-	1*3	454	722	12.5
★ SFK1205		5	2.5	22	37	8	39	29	24	4.5	-	-	-	1*3	619	883	12.5
★ SFK1402	14	2	1.2	21	40	6	23	31	26	5.5	-	-	-	1*4	287	633	18.6
SFK1602	16	2	1.2	25	43	10	40	35	29	5.5	-	-	-	1*4	253	670	21.2
SFK2002	20	2	1.2	50	80	15	55	65	68	6.5	10.5	6	M6	1*6	397	1269	39.6
SFK2502	25	2	1.2	50	80	13	43	65	68	6.5	10.5	6	M6	1*5	375	1331	41.1
SFK2503		3	2.381	40	63	11	51	51	48	5.5	9.5	5.5	M6	1*6	1100	3076	50.1

Ca Coa: 载荷单位: kgf 1kgf=9.8N

备注: 有标注★记号者可制作左螺纹 Note: with sign can produce left helix

SFY/SFE滚珠螺杆规格表
 Dimension Table of SFY/SFE Ball Screws



l: 导程 Lead Da: 珠径Ball Dia. n: 珠圈数Number of Circuits K: 刚性 Stiffness(Kgf/um)
 Ca: 动额定负荷 Basic Dynamic Rating Load(Kgf) Coa: 静额定负荷 Basic Static Rating Load(Kgf) Ls: 螺杆长度

单位: mm

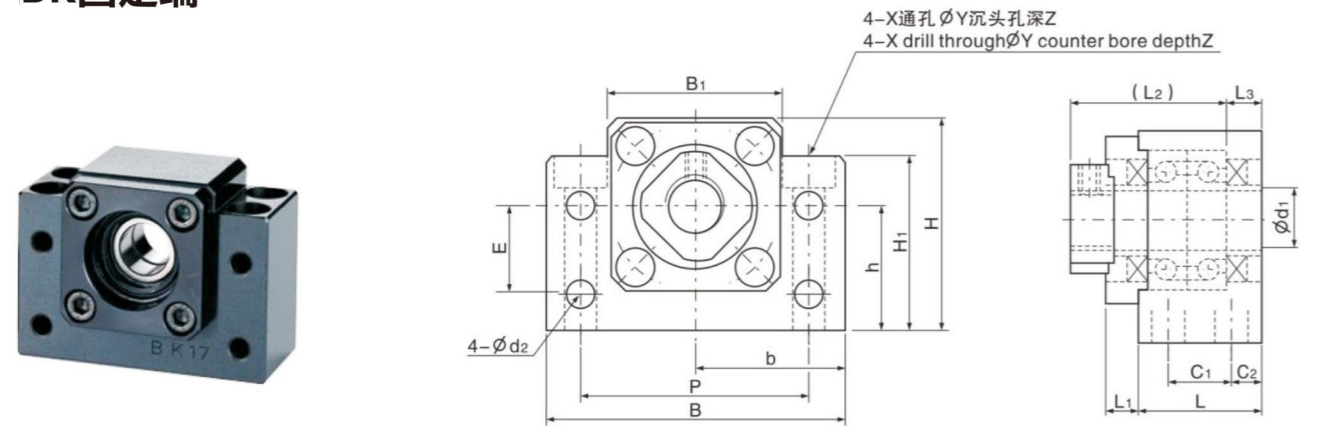
型号 Mode I No.	滚珠螺杆、螺帽之基准数据 Dimensions														额定载荷 (Load Rating)		K
	d	l	Da	D	A	E	B	L	W	H	X	Q	n	Ca	Coa		
SFY1616-3.6	16	16	2.778	32	53	10.1	10	45	42	34	4.5	M6	1.8x2	1073	2551	31	
SFY2020-3.6	20	20	3.175	39	62	13	10	52	50	41	5.5	M6	1.8x2	1387	3515	37	
SFY2525-3.6	25	25	3.969	47	74	15	12	64	60	49	6.6	M6	1.8x2	2074	5494	45	
SFY3232-3.6	32	32	4.762	58	92	17	12	78	74	60	9	M6	1.8x2	3021	8690	58	
SFY4040-3.6	40	40	6.35	73	114	19.5	15	99	93	75	11	M6	1.8x2	4831	14062	70	
SFY5050-3.6	50	50	7.938	90	135	21.5	20	117	112	92	14	M6	1.8x2	7220	21974	86	

型号 Mode I No.	滚珠螺杆、螺帽之基准数据 Dimensions														额定载荷 (Load Rating)		K
	D	l	Da	D	A	E	B	L	W	H	X	Q	n	Ca	Coa		
SFY01632-1.6	16	32	2.778	32	53	10.1	10	42.5	42	34	4.5	M6	0.8x2	493	1116	11	
SFY02040-1.6	20	40	3.175	39	62	13	10	48	50	41	5.5	M6	0.8x2	653	1597	15	
SFY02550-1.6	25	50	3.969	47	74	15	12	58	60	49	6.6	M6	0.8x2	976	2495	19	
SFY03264-1.6	32	64	4.762	58	92	17	12	71	74	60	9	M6	0.8x2	1374	3571	22	
SFY04080-1.6	40	80	6.35	73	114	19.5	15	90	93	75	11	M6	0.8x2	2273	6387	29	
SFY050100-1.6	50	100	7.938	90	135	21.5	20	111	112	92	14	M6	0.8x2	3398	9980	35	

单位: mm

型号 Mode I No.	滚珠螺杆、螺帽之基准数据 Dimensions														额定载荷 (Load Rating)		Ls
	d	l	Da	D	A	E	B	L	w	X	H	Q	n	Ca	Coa		
SFE1616	16	16	2.778	32	53	10.1	10	45	42	4.5	34	M6	1.7X2	650	1280	3000	
SFE2020	20	20	3.175	39	62	11.5	10	55	50	5.5	41	M6	1.7X2	980	2140	3000	
SFE2525	25	25	3.969	47	74	13	12	57	60	6.6	49	M6	1.7X2	1470	3350	6000	
SFE3232	32	32	4.762	58	92	16	12	82	74	9.6	60	M6	1.7X2	2140	5260	6000	
SFE4040	40	40	6.350	73	114	19	15	99	93	11	75	M6	1.7X2	3410	8820	6000	
SFE5050	50	50	7.938	90	135	21.5	20	125	112	14	92	M6	1.7X2	5100	13800	6000	

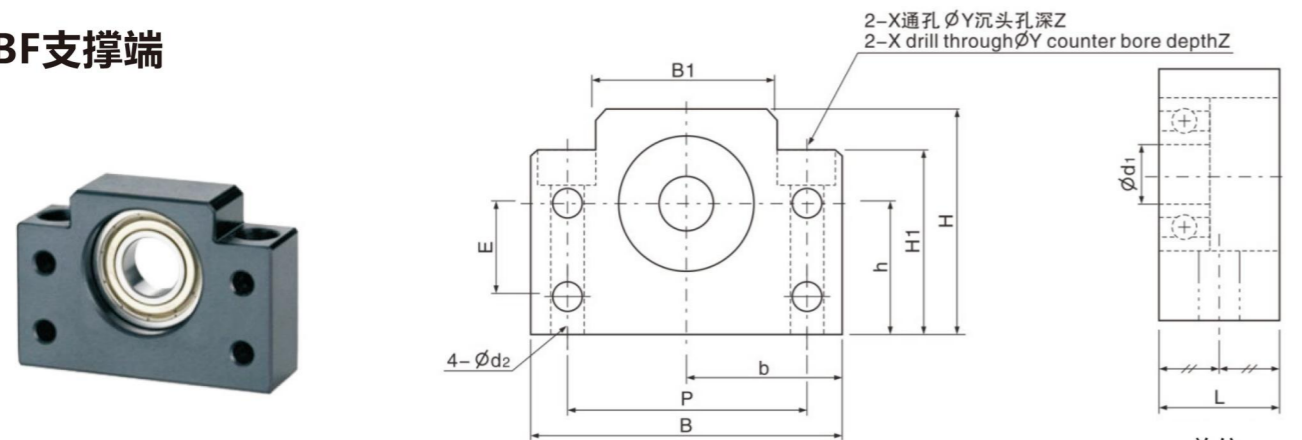
BK固定端



单位: mm

型号	d ₁	L	L ₁	L ₂	L ₃	C ₁	C ₂	B	H	b ^{+0.02}	h ^{+0.02}	B ₁	H ₁	E	P	d ₂	X	Y	Z
BK10	10	25	5	29	5	13	6	60	39	30	22	34	32.5	15	46	5.5	6.6	10.8	5
BK12	12	25	5	29	5	13	6	60	43	30	25	34	32.5	18	46	5.5	6.6	10.8	1.5
BK15	15	27	6	32	6	15	6	70	48	35	28	40	38	18	54	5.5	6.6	11	6.5
BK17	17	35	9	44	7	19	8	86	64	43	39	50	55	28	68	6.6	9	14	8.5
BK20	20	35	8	43	8	19	8	88	60	44	34	52	50	22	70	6.6	9	14	8.5
BK25	25	42	12	54	9	22	10	106	80	53	48	64	70	33	85	9	11	17.5	11
BK30	30	45	14	61	9	23	11	128	89	64	51	76	78	33	102	11	14	20	13
BK35	35	50	14	67	12	26	12	140	96	70	52	88	79	35	114	11	14	20	13
BK40	40	61	18	76	15	33	14	160	110	80	60	100	90	37	130	14	18	26	17.5

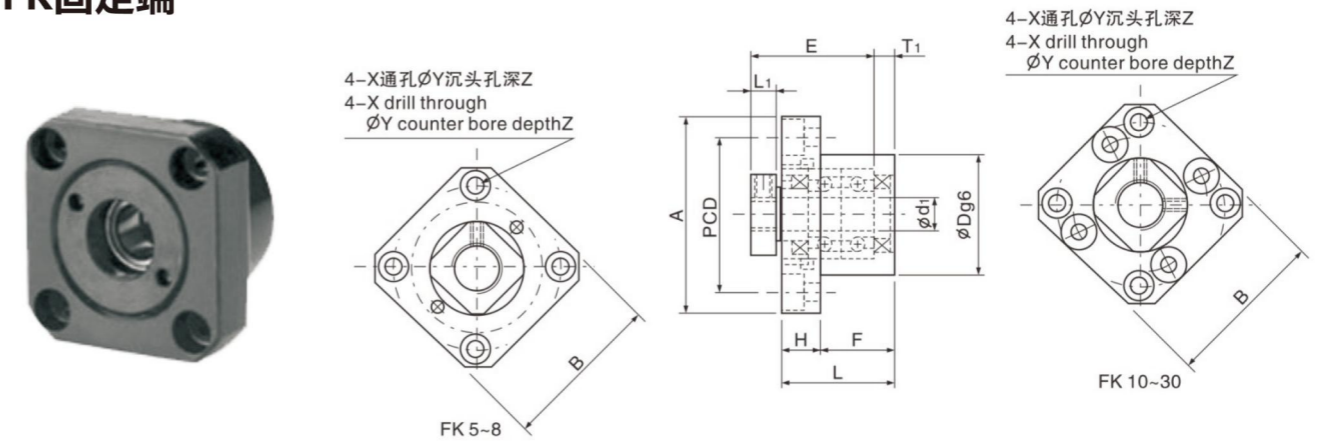
BF支撑端



单位: mm

型号	d ₁	L	B	H	b ^{+0.02}	h ^{+0.02}	B ₁	H ₁	E	P	d ₂	X	Y	Z
BF10	8	20	60	39	30	22	34	32.5	15	46	5.5	6.6	10.8	5
BF12	10	20	60	43	30	25	34	32.5	18	46	5.5	6.6	10.8	1.5
BF15	15	20	70	48	35	28	40	38	18	54	5.5	6.6	11	6.5
BF17	17	23	86	64	43	39	50	55	28	68	6.6	9	14	8.5
BF20	20	26	88	60	44	34	52	50	22	70	6.6	9	14	8.5
BF25	25	30	106	80	53	48	64	70	33	85	9	11	17.5	11
BF30	30	32	128	89	64	51	76	78	33	102	11	14	20	13
BF35	35	32	140	96	70	52	88	79	35	114	11	14	20	13
BF40	40	37	160	110	80	60	100	90	37	130	14	18	26	17.5

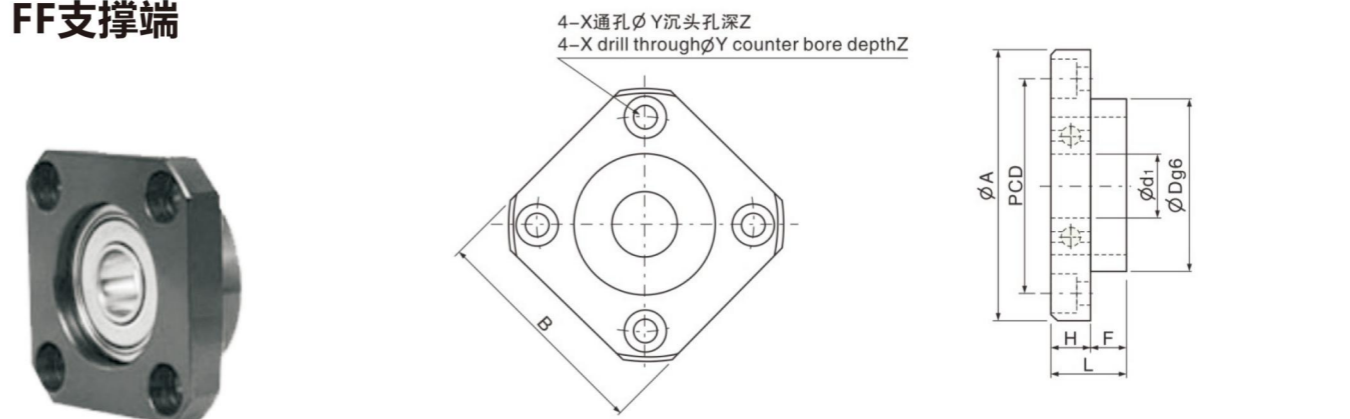
FK固定端



单位: mm

型号	d ₁	L	H	F	E	Dg ₆	A	PCD	B	L ₁	T ₁	X	Y	Z
FK5	5	16.5	6	10.5	18.5	20	34	26	26	5.5	3.5	3.4	6.5	4
FK6	6	20	7	13	22	22	36	28	28	5.5	3.5	3.4	6.5	4
FK8	8	23	9	14	26	28	43	35	35	7	4	3.4	6.5	4
FK10	10	27	10	17	29.5	34	52	42	42	7.5	5	4.5	8	4
FK12	12	27	10	17	29.5	36	54	44	44	7.5	5	4.5	8	4
FK15	15	32	15	17	36	40	63	50	52	10	6	5.5	9.5	6
FK20	20	52	22	30	50	57	86	70	68	8	10	6.5	11	10
FK25	25	57	27	30	60	63	98	80	79	13	10	9	15	13
FK30	30	62	30	32	61	75	117	95	93	11	12	11	17.5	15

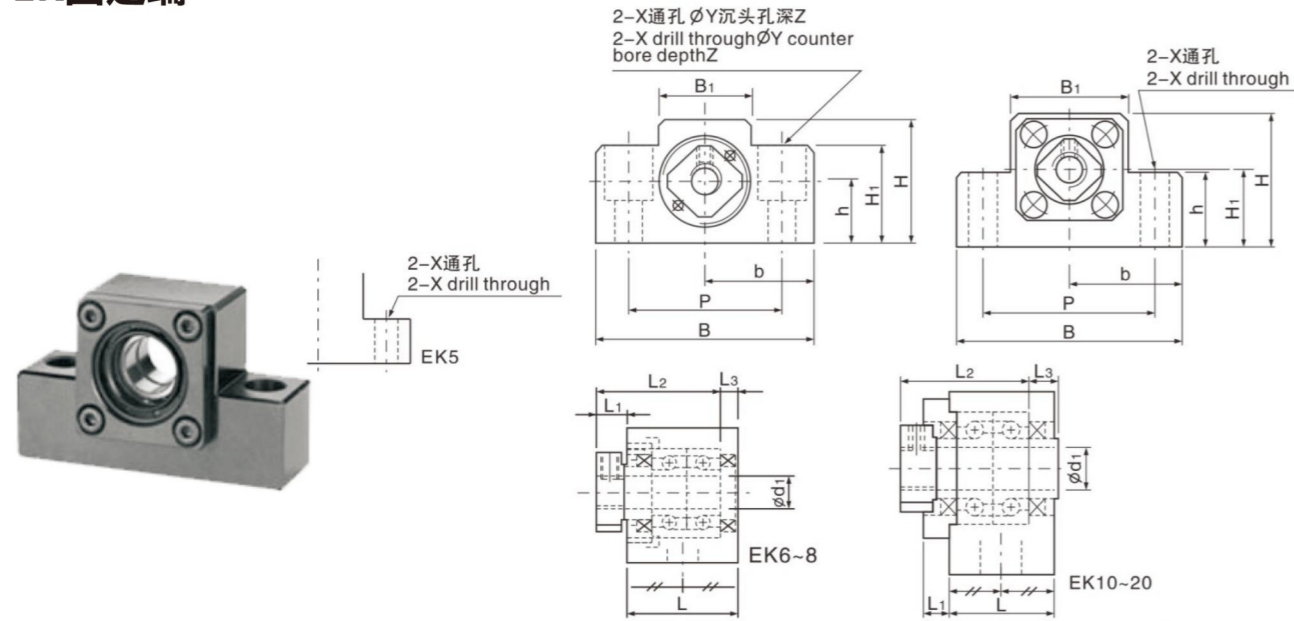
FF支撑端



单位: mm

型号	d ₁	L	H	F	Dg ₆	A	PCD	B	X	Y	Z
FF6	6	10	6	4	22	36	28	28	3.4	6.5	4
FF10	8	12	7	5	28	43	35	35	3.4	6.5	4
FF12	10	15	7	8	34	52	42	42	4.5	8	4
FF15	15	17	9	8	40	63	50	52	5.5	9.5	5.5
FF20	20	20	11	9	57	85	70	68	6.6	11	6.5
FF25	25	24	14	10	63	98	80	79	9	14	8.5
FF30	30	27	18	9	75	117	95	93	11	17.5	11

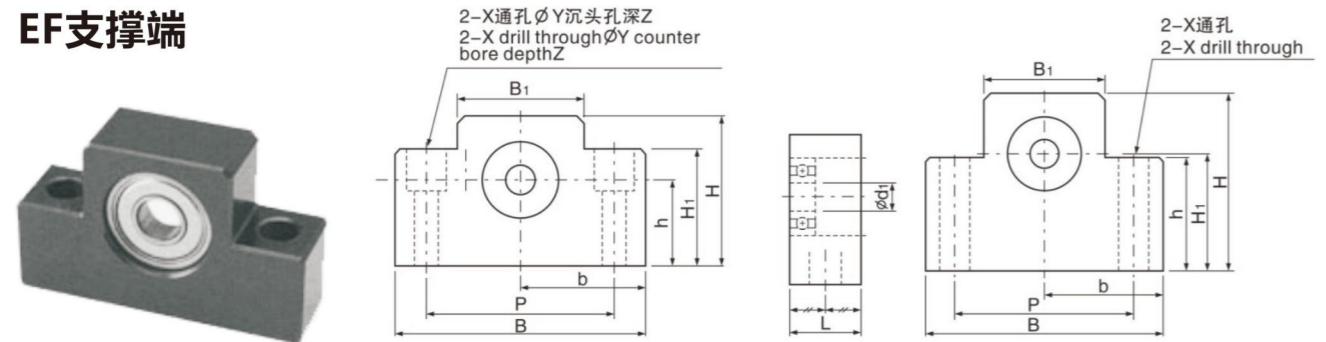
EK固定端



单位: mm

型号	d ₁	L	L ₁	L ₂	L ₃	B	H	b ^{±0.02}	h ^{±0.02}	B ₁	H ₁	P	X	Y	Z
EK5	5	16.5	5.5	18.5	3.5	36	21	18	11	20	8	28	4.5	-	-
EK6	6	20	5.5	22	3.5	42	25	21	13	18	20	30	4.5	9.5	11
EK8	8	23	7	26	4	52	32	26	17	25	26	38	6.6	11	12
EK10	10	24	6	29.5	6	70	43	35	25	36	24	52	9	-	-
EK12	12	24	6	29.5	6	70	43	35	25	36	24	52	9	-	-
EK15	15	25	6	35	5	80	49	40	30	41	25	60	11	-	-
EK20	20	42	10	50	10	95	58	47.5	30	56	25	75	11	-	-

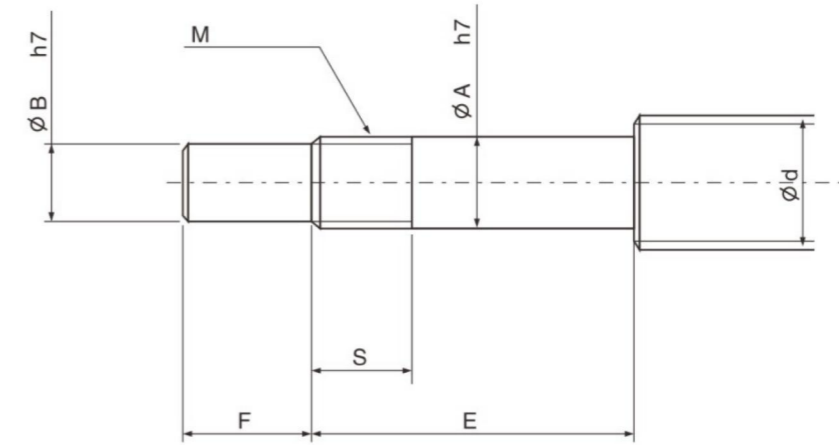
EF支撑端



单位: mm

型号	d ₁	L	B	H	b ^{±0.02}	h ^{±0.02}	B ₁	H ₁	P	X	Y	Z
EF6	6	12	42	25	21	13	18	20	30	5.5	9.5	11
EF8	6	14	52	32	26	17	25	26	38	6.6	11	12
EF10	8	20	70	43	35	25	36	24	52	9	-	-
EF12	10	20	70	43	35	25	36	24	52	9	-	-
EF15	15	20	80	49	40	30	41	25	60	9	-	-
EF20	20	26	95	58	47.5	30	56	25	72	11	-	-

建议轴端尺寸 (固定端) -BK.FK.EK



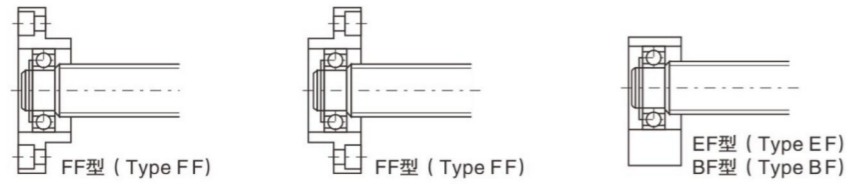
单位: mm

型号	滚珠丝杆轴外径	轴承部轴外径				公称螺纹	
Type BK	d	A	B	E	F	M	S
BK10	12/14/15	10	8	39	15	M10X1	16
BK12	14/15/16	12	10	39	15	M12X1	14
BK15	18/20	15	12	40	20	M15X1	12
BK17	20/25	17	15	53	23	M17X1	17
BK20	25/28	20	17	53	25	M20X1	15
BK25	32/36	25	20	65	30	M25X1.5	18
BK30	36/40	30	25	72	38	M30X1.5	25
BK35	45	35	30	81	45	M35X1.5	28
BK40	50	40	35	93	50	M40X1.5	35

单位: mm

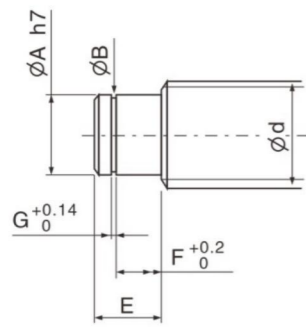
型号	滚珠丝杆轴外径	轴承部轴外径				公称螺纹		
Type FK	Type EK	d	A	B	E	F	M	S
FK6	EK6	8	6	4	28	8	M6X0.75	8
FK8	EK8	10/12	8	6	32	9	M8X1	10
FK10	EK10	12/14/15	10	8	36	15	M10X1	11
FK12	EK12	14/15/16	12	10	36	15	M12X1	11
FK15	EK15	18/20	15	12	47	20	M15X1	13
FK20	EK20	25/28/30	20	17	62	25	M20X1	17
FK25	-	30/32/36	25	20	76	30	M25X1.5	20
FK30	-	36/40	30	25	72	38	M30X1.5	25

建议轴端尺寸 (固定端) -FF.EF.BF



单位: mm

型号			滚珠丝杆轴 外径	轴承部轴外径
Type FF	Type EF	Type BF	d	A
FF10	EF10	BF10	12/14/15	8
FF12	EF12	BF12	14/15/16	10
FF15	EF15	BF15	18/20	15
FF17	-	BF17	20/25	17
FF20	EF20	BF20 (NOTE)	25/28/30	20
FF25	-	BF25	30/32/36	25
FF30	-	BF30	36/40	30
-	-	BF35	40/45	35
-	-	BF40	50	40



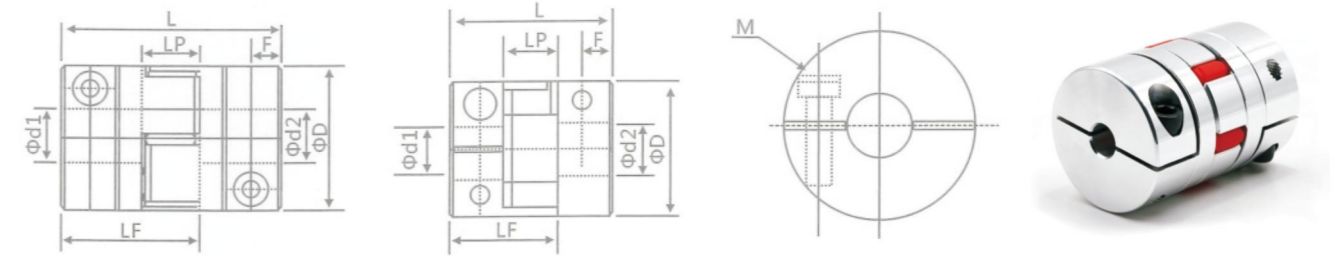
(注)
 尺寸表中的 () 尺寸表示BF20的尺寸。它与FF20及EF20的尺寸不同, 因此订货时请务必告知所使用的支撑单元型号。

Note:
 In this table, dimensions in parentheses are those of type BF20. These dimensions differ from those of type FF20 and EF20. When placing an order, always specify the model number of the Support Unit to be used.

单位: mm

环扣沟槽Snap-ring Groove				
E	B	F	G	
10	7.6	7	0.9	
11	9.6	8	1.15	
13	14.3	9	1.15	
16	16.2	12	1.15	
19 (16)	19	14 (12)	1.35	
20	23.9	15	1.35	
21	28.6	16	1.75	
22	33	17	1.75	
23	38	18	1.75	

GFC铝合金梅花型夹紧系列



外型尺寸(单位: mm)

参数	常用 d1, d2 轴径	ΦD	L	LF	LP	F	M	紧固螺丝扭矩 (N·M)
GFC-14x22	3, 4, 5, 6, 6.35	14	22	14.3	6.6	5.0	M2.5	1.0
GFC-20x25	3, 4, 5, 6, 6.35, 7, 8, 9, 9.525, 10	20	25	16.7	8.6	5.9	M3	1.5
GFC-20x30	3, 4, 5, 6, 6.35, 7, 8, 9, 9.525, 10	20	30	19.25	8.6	5.9	M3	1.5
GFC-25x30	4, 5, 6, 6.35, 7, 8, 9, 9.525, 10, 11, 12	25	30	20.82	11.6	8.5	M4	2.5
GFC-25x34	4, 5, 6, 6.35, 7, 8, 9, 9.525, 10, 11, 12	25	34	22.82	11.6	8.5	M4	2.5
GFC-30x35	5, 6, 6.35, 7, 8, 9, 10, 11, 12, 12.7, 14, 15, 16	30	35	23	11.5	10	M4	2.5
GFC-30x40	5, 6, 6.35, 7, 8, 9, 10, 11, 12, 12.7, 14, 15, 16	30	40	25	11.5	10	M4	2.5
GFC-40x50	6, 8, 9, 10, 11, 12, 12.7, 14, 15, 16, 17, 18, 19, 20, 22, 24	40	50	32.1	14.5	14	M5	7
GFC-40x55	6, 8, 9, 10, 11, 12, 12.7, 14, 15, 16, 17, 18, 19, 20, 22, 24	40	55	34.5	14.5	14	M5	7
GFC-40x66	6, 8, 9, 10, 11, 12, 12.7, 14, 15, 16, 17, 18, 19, 20, 22, 24	40	66	40	14.5	14	M5	7
GFC-55x49	10, 11, 12, 12.7, 14, 15, 16, 17, 18, 19, 20, 22, 24, 25, 28, 30, 32	55	49	32	16.1	13.5	M6	12
GFC-55x78	8, 10, 12, 12.7, 14, 15, 16, 17, 18, 19, 20, 22, 24, 25, 28, 30, 32	55	78	46.4	16.1	19	M6	12
GFC-65x80	14, 15, 16, 17, 18, 19, 20, 22, 24, 25, 28, 30, 32, 35, 38, 40	65	80	48.5	17.3	14	M8	20
GFC-65x90	14, 15, 16, 17, 18, 19, 20, 22, 24, 25, 28, 30, 32, 35, 38, 40	65	90	53.5	17.3	22.5	M8	20
GFC-80X114	19, 20, 22, 24, 25, 28, 30, 32, 35, 38, 40, 42, 45	80	114	68	22.5	16	M8	20
GFC-95X126	19, 20, 22, 24, 25, 28, 30, 32, 35, 38, 40, 42, 45, 50, 55	95	126	74.5	24	18	M10	30

参数	额定扭矩 (N·M)*	容许偏心 (mm)*	容许偏角 (°)*	容许轴向偏差 (mm)*	最高转速 (rpm)	静态扭转刚度 (N·M/rad)	惯性矩 (Kg·M²)	轴套材质	弹性体材质	表面处理	重量 (g)
GFC-14x22	5.0	0.1	1	±02	10000	50	1.0x10 ⁻⁶	高强度铝合金	德国进口聚氨脂	阳极氧化处理	10
GFC-20x25	5.0	0.1	1	±02	10000	50	1.0x10 ⁻⁶				15
GFC-20x30	5.0	0.1	1	±02	10000	53	1.1x10 ⁻⁶				19
GFC-25x30	10	0.1	1	±02	10000	90	5.2x10 ⁻⁶				33
GFC-25x34	10	0.1	1	±02	10000	90	5.2x10 ⁻⁶				42
GFC-30x35	12.5	0.1	1	±02	10000	123	6.2x10 ⁻⁶				50
GFC-30x40	12.5	0.1	1	±02	10000	123	6.2x10 ⁻⁶				60
GFC-40x50	17	0.1	1	±02	8000	1100	3.8x10 ⁻⁵				115
GFC-40x55	17	0.1	1	±02	8000	1100	3.8x10 ⁻⁵				127
GFC-40x66	17	0.1	1	±02	7000	1140	3.9x10 ⁻⁵				154
GFC-55x49	45	0.1	1	±02	6500	2350	1.6x10 ⁻³				241
GFC-55x78	45	0.1	1	±02	6000	2500	1.6x10 ⁻³				341
GFC-65x80	108	0.1	1	±02	5500	4500	3.8x10 ⁻³	433			
GFC-65x90	108	0.1	1	±02	5500	4800	3.8x10 ⁻³	583			
GFC-80X11	145	0.1	1	±02	4500	5000	1.8x10 ⁻³	1650			
GFC-95X12	250	0.1	1	±02	4000	5000	2.0x10 ⁻³	1000			

注: 必须在容许值的范围内使用该联轴器

12-57系列 12-60系列

项目号 Number	部件名称/Part name	数量 quantity
1	传动座主体/Housing	1
2	压盖/Gland	1
3	顶圈/Top ring	2
4	骨架油封/Simmerrings	2
5	角接触轴承7001 Angular contact bearings 7001	1组
6	M12X1s锁紧螺母 M12X1s locknut	1组

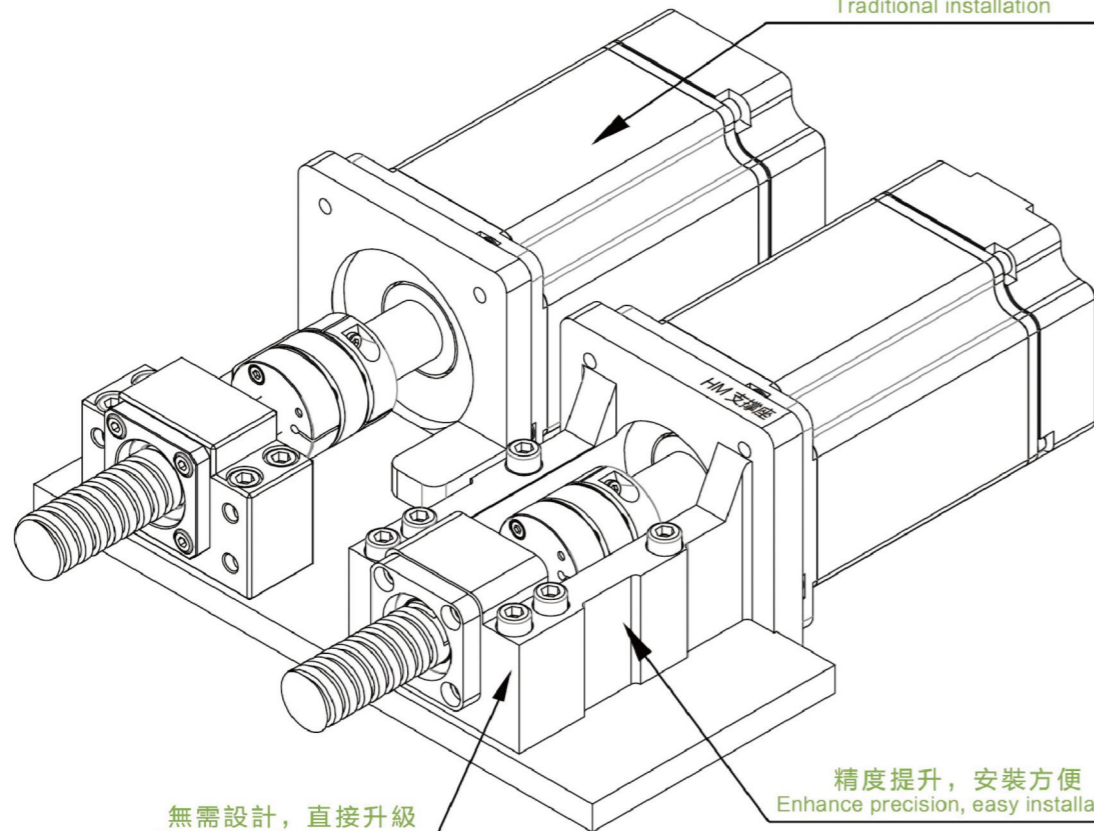


特点/Feature

一體化馬達座定位孔與軸承安裝孔採取一體化加工,能最大限度保證馬達軸心/聯軸器軸心/軸承孔軸心/絲杆軸心等四位一休,從而克服了分離式馬達座與分離式軸承座聯合安裝時難以同軸的缺點!

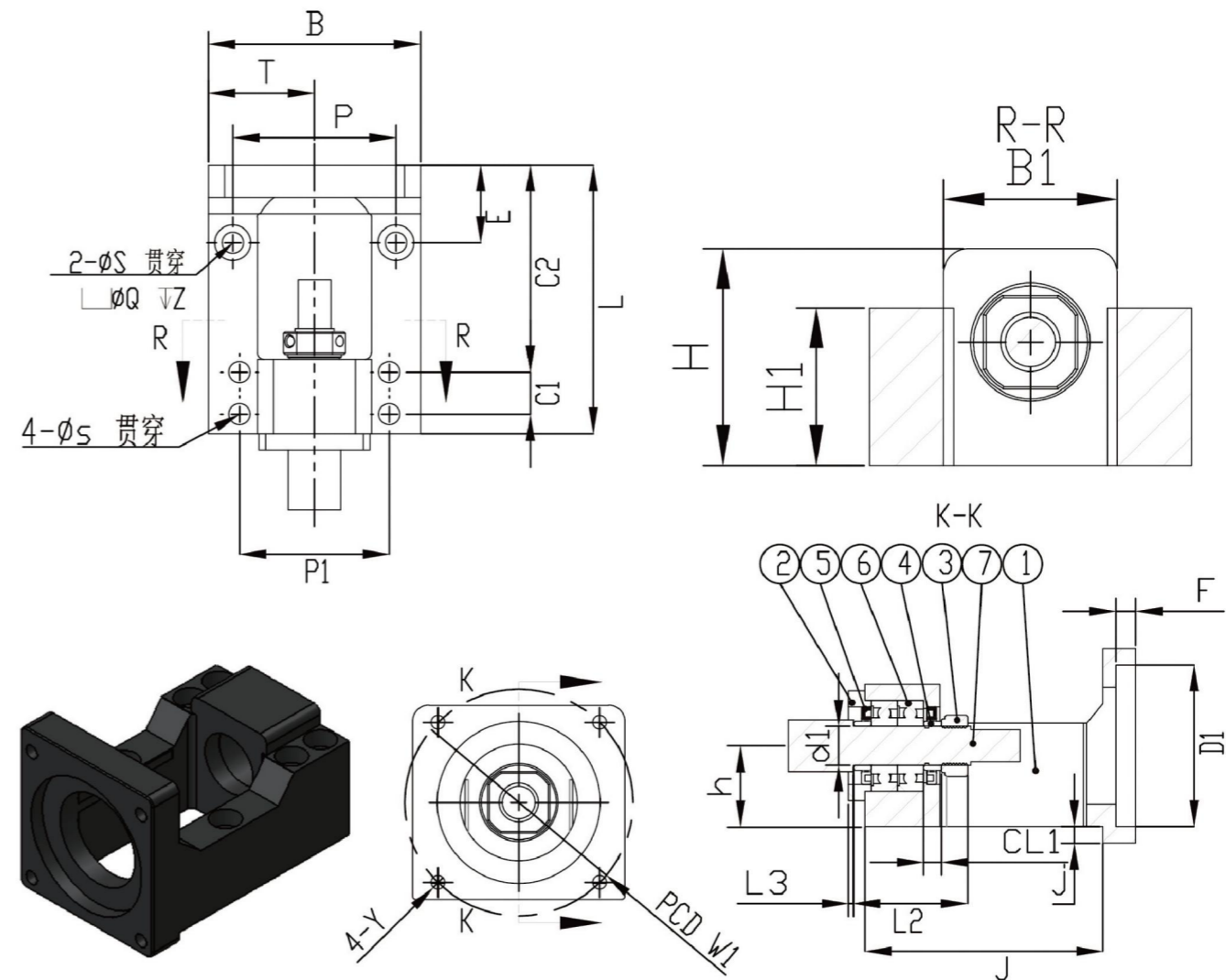
Integrated motor mount positioning holes and the bearing mounting hole take the integration process, to ensure maximum motor shaft / coupling Axial / axial bearing hole / screw axis other four a break to overcome the separation of motor housing when the split bearing joint is difficult to install coaxial shortcomings!

傳統的安裝方式
Traditional installation



無需設計, 直接升級
No need to set a direct upgrade

精度提升, 安裝方便
Enhance precision, easy installation



尺寸选型表/Selecyn Size Chart

型号/Model	D1	W1	Y	L	h0.02	B	P	P1	T	CL1	L2	L3	H	H1	B1	A	轴径d1
SGR12-57	38.1	66.7	M4	89	25	60	46	46	30	5.5	35	1.5	44	37	34	57	12
SGR12-60	50	70	M5	89	25	60	46	46	30	5.5	35	1.5	44	37	34	60	12

型号/Model	N	S	Q	Z	S	E	C1	C2	F	J	J	重量 Weight	轴承型号 Bearing Type	支持端 End support	联轴器 Coupling
SGR12-57	47.1	6.6	11	2	6.6	40	13	70	5	77	5.5	0.85	7001	BF12	30-42∅10-14
SGR12-60	49.5	6.6	11	2	6.6	40	13	70	5	77	5.5	0.85	7001	BF12	30-42∅10-14

备注:

- 1.使用之轴承经预压处理, 轴向0间隙 (All types make preload)
- 2.轴承采用P5配对组装, 最适合滚珠丝杆使用。
(Bearing P5 oairng assembled using the most appropriate ball screw.)

15-57系列 15-60系列

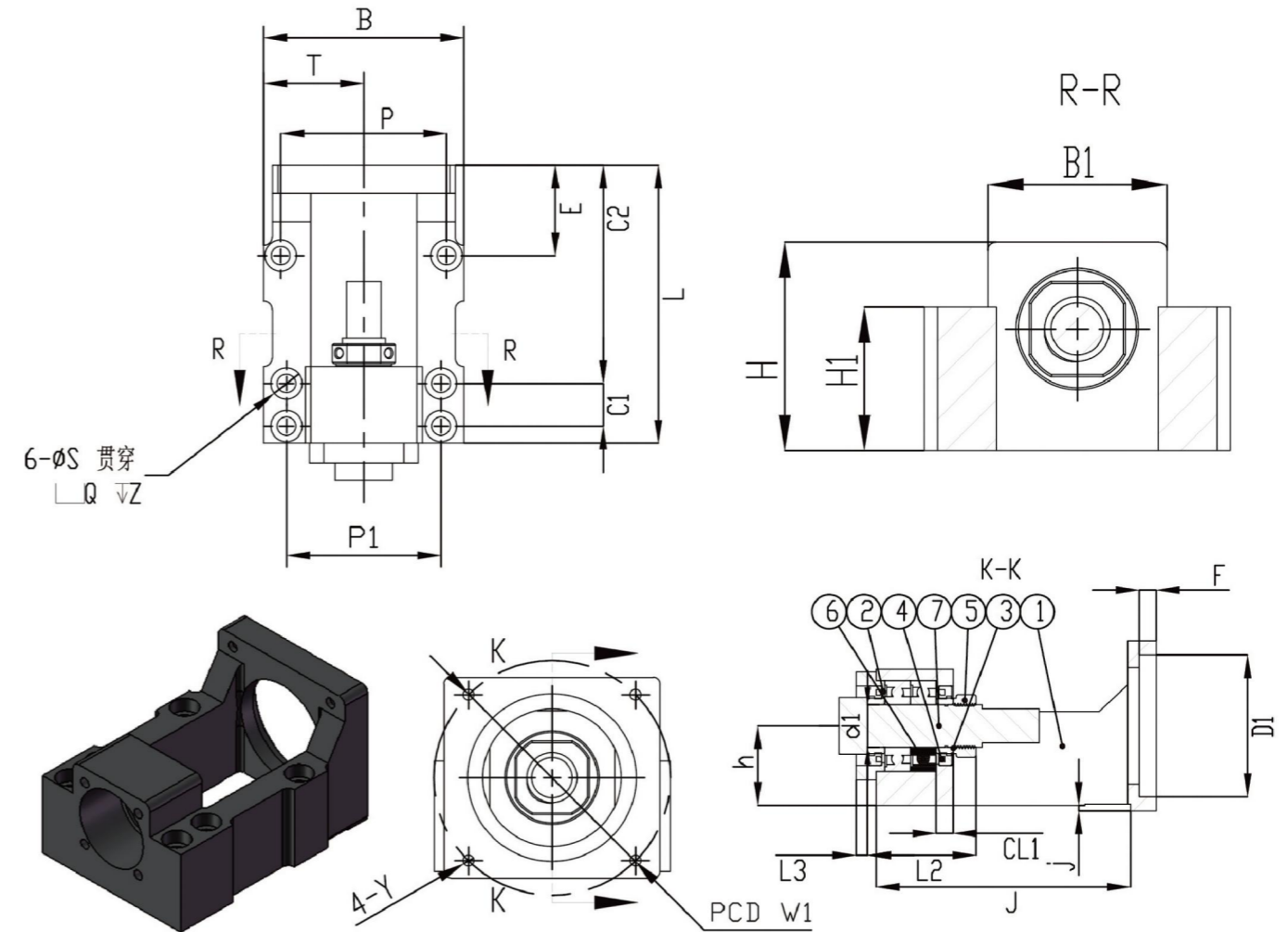
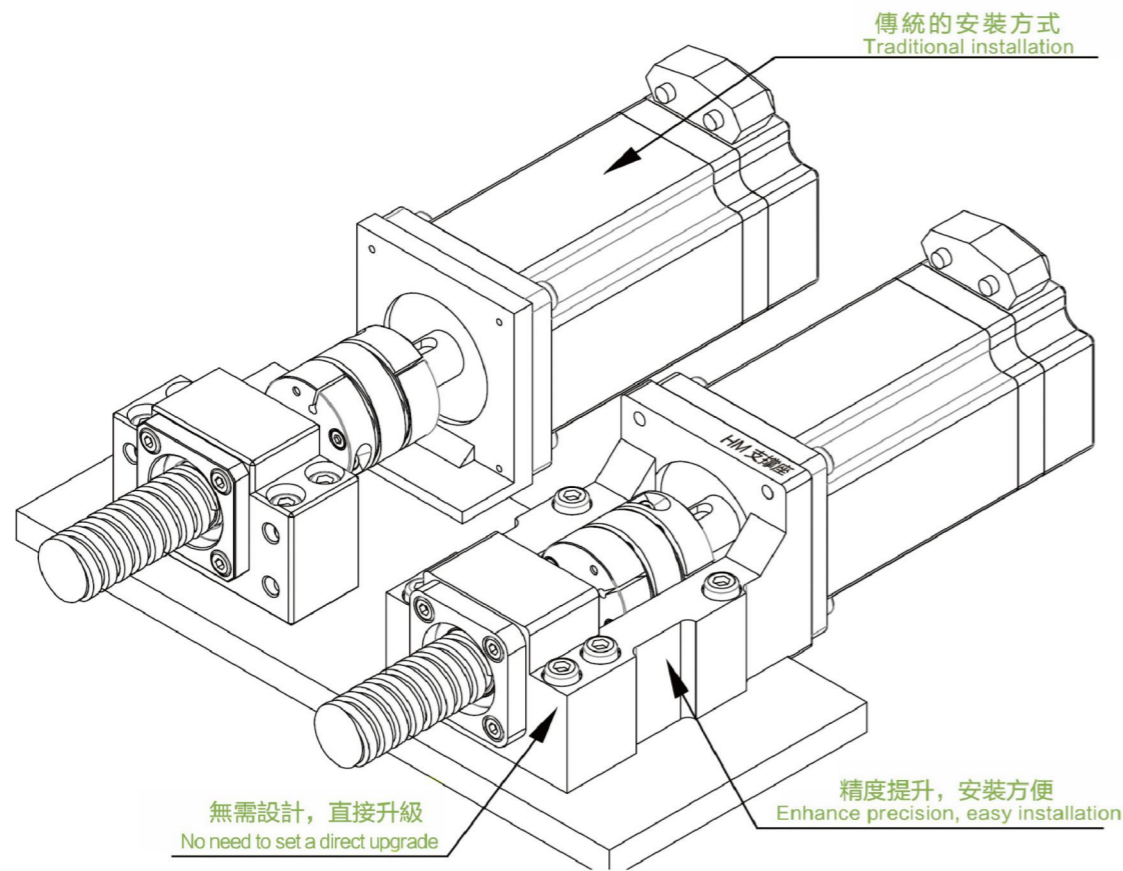
项目号 Number	部件名称/Part name	数量 quantity
1	传动座主体/Housing	1
2	压盖/Gland	1
3	顶圈/Top ring	2
4	骨架油封/Simmerrings	2
5	角接触轴承7002 Angular contact bearings 7002	1组
6	M15X1s锁紧螺母 M15X1s locknut	1组



特点/Feature

支座组件已安装,无需再配固定侧,安装简易化,因此马达的组装可通过嵌入部简单定位..轴心精度良好:在构造上,滚珠丝杠侧和马达侧的安装部形成一体,可抑制两轴的轴心偏差.专业为伺服、步进电机设计。

Carriage assembly is installed without adding the fixed side, ease of installation, thus assembly of the motor can be easily positioned by the embedding section .. good axis accuracy: in construction, installation side and motor side ball screw portion formed integrally, inhibit two shaft axis deviation. professional servo, stepper motor design.



尺寸选型表/Selecyion Size Chart

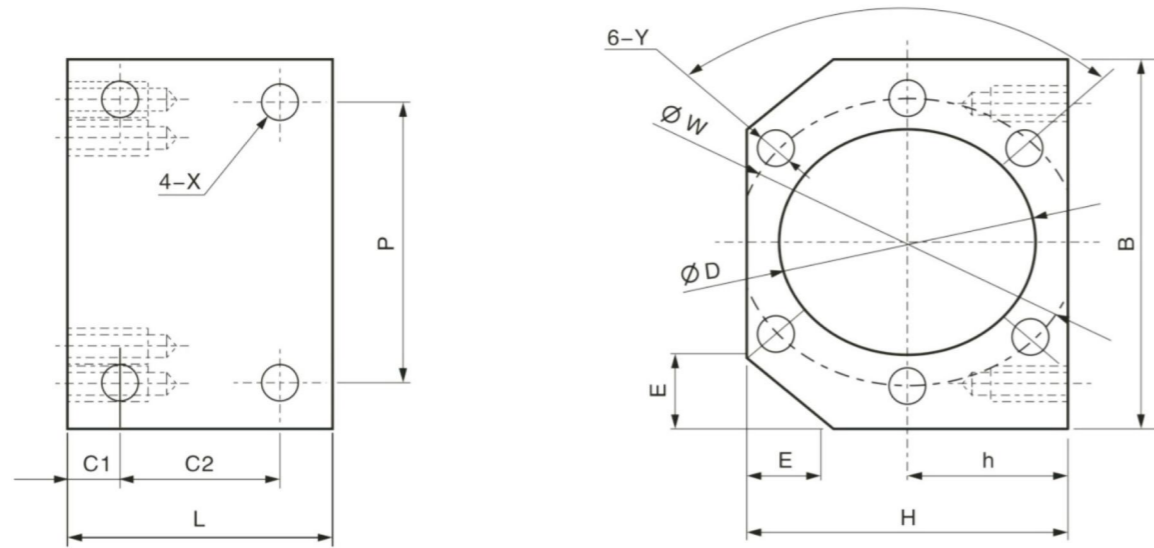
型号/Model	D1	W1	Y	L	h0.02	B	P	P1	T	CL1	L2	L3	H	H1	B1	A	轴径d1
SGR15-57	38.1	66.7	M4	98	28	70	58	54	35	6	38	3	48	33	41	57	15
SGR15-60	50	70	M5	98	28	70	58	54	35	6	38	3	48	33	41	60	15

型号/Model	N	S	Q	Z	S	E	C1	C2	F	J	J	重量 Weight	轴承型号 Bearing Type	支持端 End support	联轴器 Coupling
SGR12-57	47.1	6.6	11	2	6.6	40	13	70	5	77	5.5	0.85	7001	BF12	30-42 ϕ 10-14
SGR12-60	49.5	6.6	11	2	6.6	40	13	70	5	77	5.5	0.85	7001	BF12	30-42 ϕ 10-14

备注:

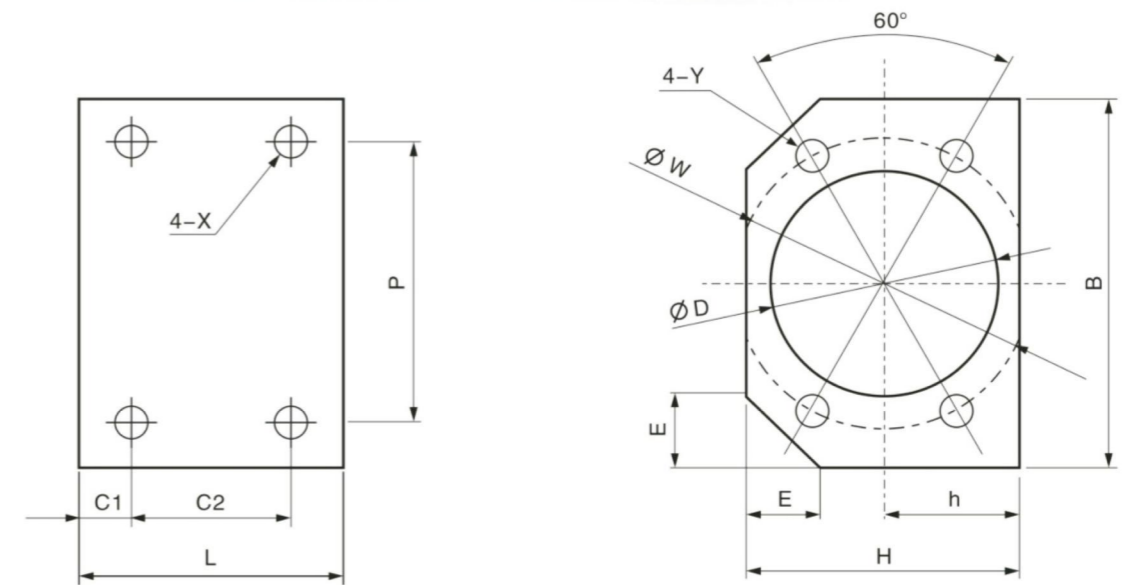
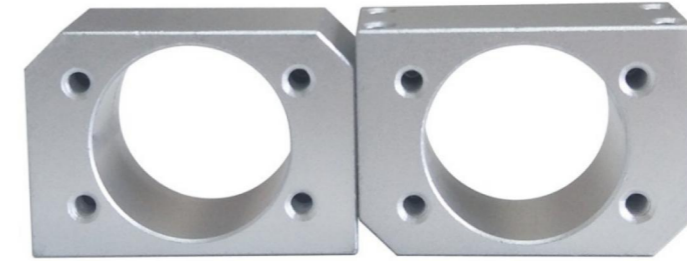
- 1.使用之轴承经预压处理,轴向0间隙 (All types make preload)
- 2.轴承采用P5配对组装,最适合滚珠丝杠使用。
(Bearing P5 oairng assembled using the most appropriate ball screw.)

DSG螺母座

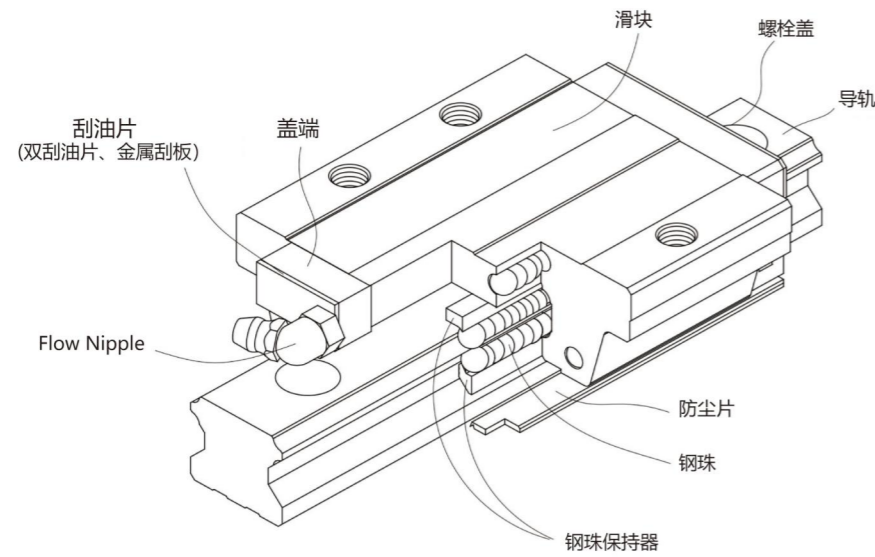


型号	适用螺母	D	B	H	h	E	L	C ₁	C ₂	P	X	W	Y
DSG12H	1204	22 24	50	30	15	1	36	6	24	35	M5	32	M4
DSG16H	1605	28	52	40	20	12	40	8	24	40	M5	38	M5
	1610												
DSG20H	2005	36	62	44	22	12	40	8	24	48	M6	47	M6
	2010												
DSG25H	2505	40	66	48	24	13	40	8	24	50	M6	51	M6
	2510												
DSG32H	3205	50	86	62	31	17	40	8	24	66	M8	65	M8
	3210												
DSG40H	4005	63	100	80	40	19	60	10.5	39	78	M8	78	M8
	4010												
DSG50H	5010	75	116	85	42.5	22	46	10	26	92	M8	93	M8

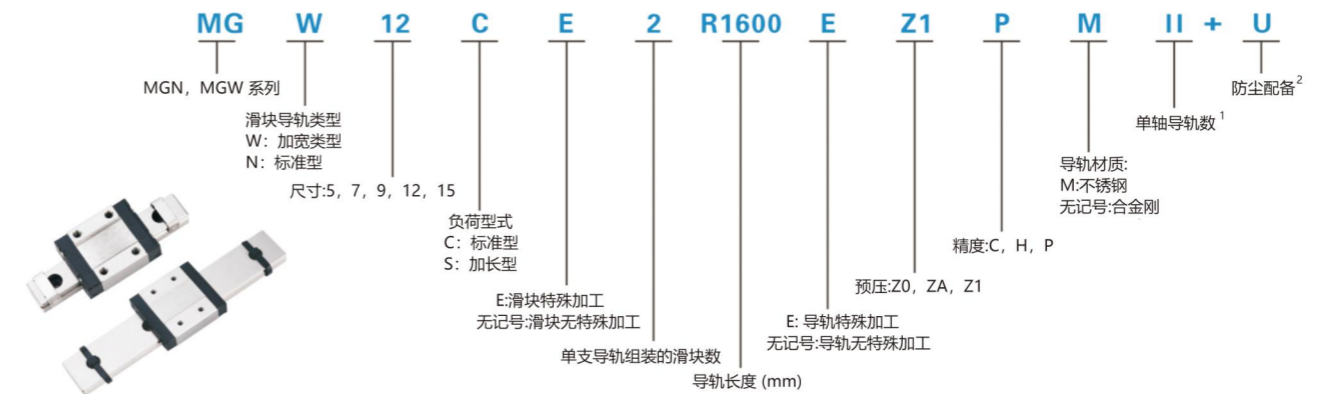
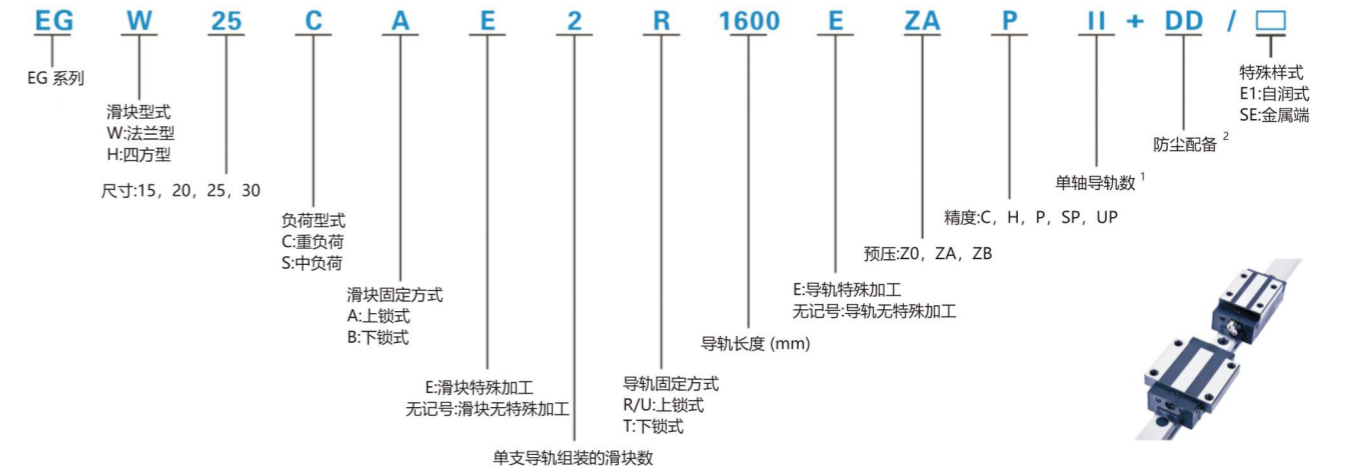
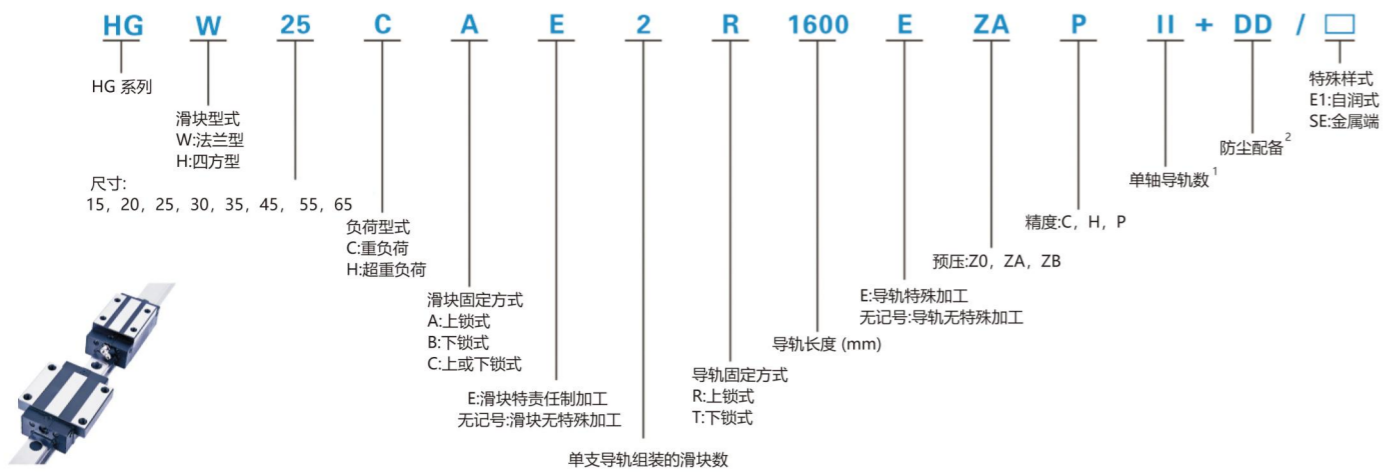
DSG大导程螺母座



型号	适用螺母	D	B	H	h	E	L	C ₁	C ₂	P	X	W	Y
DSG1616	1616	32	55	40	20	8	27	6	15	46	M4	42	M4
DSG2020	2020	39	66	47	23.5	11	35	7.5	20	56	M5	50	M5
DSG2525	2525	47	78	55	27.5	9	35	7.5	20	68	M6	60	M6
DSG3232	3232	58	95	66	33	10	55	10	35	82	M8	74	M8

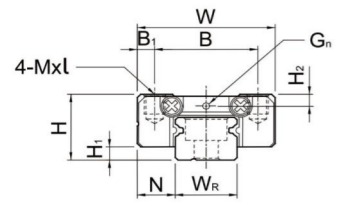


- 滚动循环系统：滑块、导轨、端盖、钢珠、钢珠保持器
- 润滑系统：油嘴、油管接头
- 防尘系统：刮油片、底片防尘片、导轨螺栓盖、金属刮板

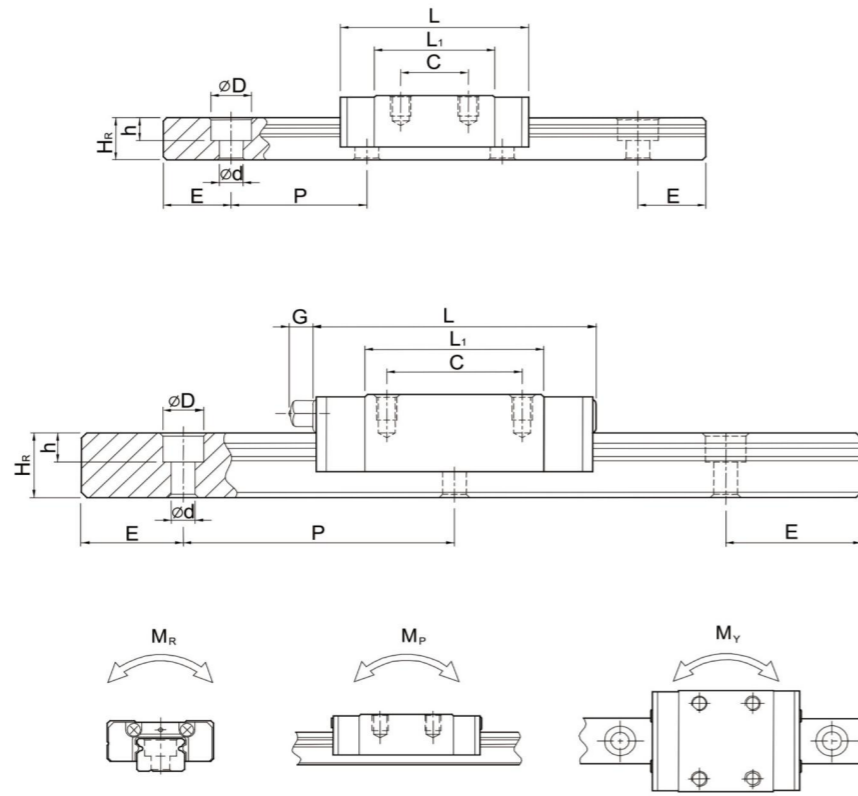
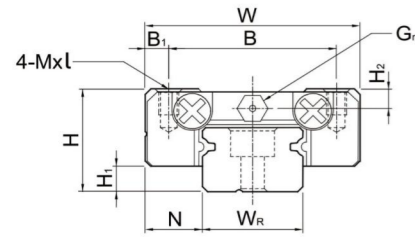


注：
1、单轴导轨数若只使用一支导轨则不写，两支标记为11，三支标记为111以此类推。
2、防尘配备中无记号为防尘标准配备刮油片和防尘片。
ZZ：为刮油片加防尘片加金属刮板
KK：为变刮油片加防尘片加金属刮板
DD：为变刮油片加防尘片
U：为MGN及MGW12, 15规格可选用防尘片

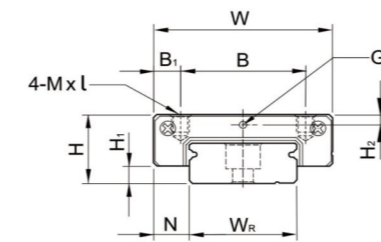
MGN7, MGN9, MGN12



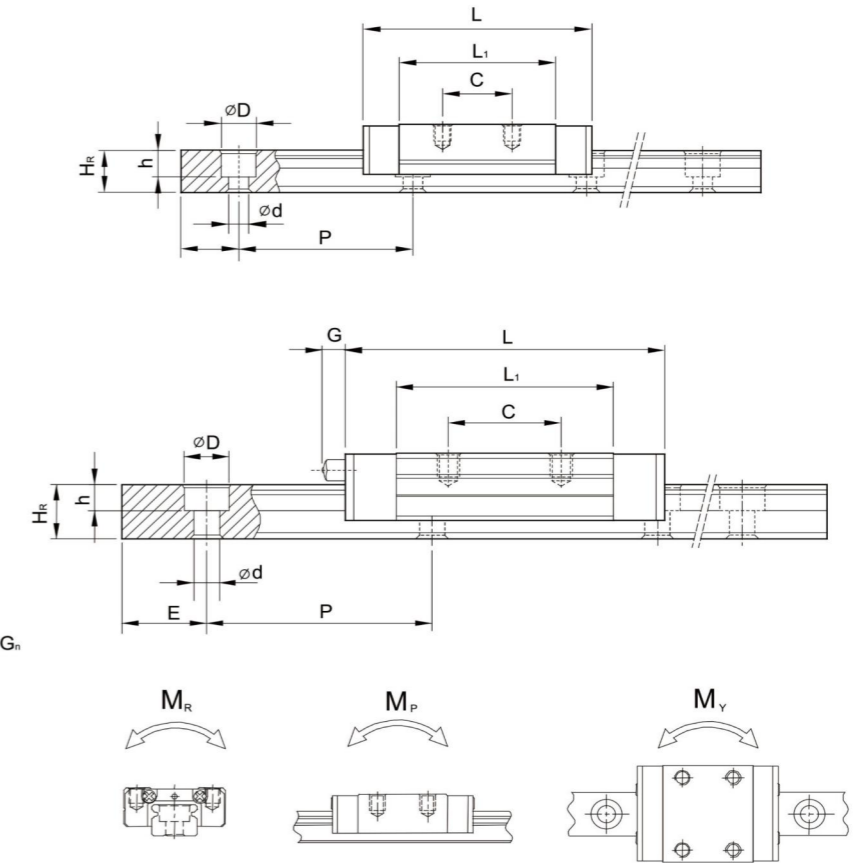
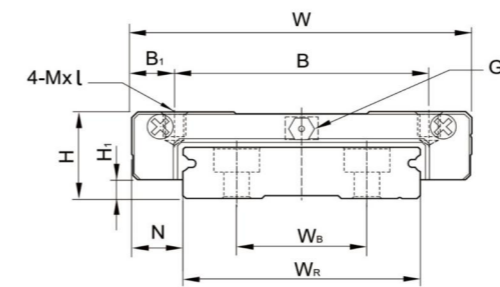
MGN15



MGW7, MGW9, MGW12



MGW15



型号 Model No.	组件尺寸 Dimensions of Assembly (mm)			滑块尺寸 Dimensions of Block (mm)										滑轨尺寸 Dimensions of Rail (mm)					滑轨固定 螺栓尺寸 Mounting Bolt for Rail (mm)	9.11 动 负荷 Basic Dynamic Load Rating C0(kN)	静负荷 Basic Static Load Rating C00(kN)	容许静力矩 Static Rated Moment			重量 Weight			
	H	H1	N	W	B	B1	C	L1	L	G	Gn	Mxl	H2	WR	HR	D	h	d				P	E	MR	MP	MY	滑块 Block kg	滑轨 Rail kg/m
MGN 5C	6	1.5	3.5	12	8	2	-	9.6	16	-	0.8	M2X1.5	1	5	3.6	3.6	0.8	2.4	15	5	M2X6	0.54	0.84	2	1.3	1.3	0.008	0.15
MGN 7C	8	1.5	5	17	12	2.5	8	13.5	22.5	-	Φ1.2	M2X2.5	1.5	7	4.8	4.2	2.3	2.4	15	5	M2X6	0.98	1.24	4.70	2.84	2.84	0.010	0.22
MGN 7H							13	21.8	30.8	-	Φ1.2	M2X2.5	1.5	7	4.8	4.2	2.3	2.4	15	5	M2X6	1.37	1.96	7.66	4.80	4.80	0.015	
MGN 9C	10	2	5.5	20	15	2.5	10	18.9	28.9	-	Φ1.4	M3X3	1.8	9	6.5	6	3.5	3.5	20	7.5	M3X8	1.86	2.55	11.76	7.35	7.35	0.016	0.38
MGN 9H							16	29.9	39.9	-	Φ1.4	M3X3	1.8	9	6.5	6	3.5	3.5	20	7.5	M3X8	2.55	4.02	19.60	18.62	18.62	0.026	
MGN 12C	13	3	7.5	27	20	3.5	15	21.7	34.7	-	Φ2	M3X3.5	2.5	12	8	6	4.5	3.5	25	10	M3X8	2.84	3.92	25.48	13.72	13.72	0.034	0.65
MGN 12H							20	32.4	45.4	-	Φ2	M3X3.5	2.5	12	8	6	4.5	3.5	25	10	M3X8	3.72	5.88	38.22	36.26	36.26	0.054	
MGN 15C	16	4	8.5	32	25	3.5	20	26.7	42.1	4.5	M3	M3X4	3	15	10	6	4.5	3.5	40	15	M3X10	4.61	5.59	45.08	21.56	21.56	0.059	1.06
MGN 15H							25	43.4	58.8	4.5	M3	M3X4	3	15	10	6	4.5	3.5	40	15	M3X10	6.37	9.11	73.50	57.82	57.82	0.092	

型号 Model No.	组件尺寸 Dimensions of Assembly (mm)			滑块尺寸 Dimensions of Block (mm)										滑轨尺寸 Dimensions of Rail (mm)					滑轨固定 螺栓尺寸 Mounting Bolt for Rail (mm)	9.11 动 负荷 Basic Dynamic Load Rating C0(kN)	静负荷 Basic Static Load Rating C00(kN)	容许静力矩 Static Rated Moment			重量 Weight						
	H	H1	N	W	B	B1	C	L1	L	G	Gn	Mxl	H2	WR	Wa	HR	D	h				d	P	E	MR	MP	MY	滑块 Block kg	滑轨 Rail kg/m		
MGW 5C							13	2	-	14.1	20.5	-	Φ0.8	M2.5X1.5	1	10	-	4	5.5	1.6	3	20	5	M2.5X7	0.68	1.18	5.5	2.7	2.7	0.016	0.34
MGW 5CL	6.5	1.5	3.5	17			8.5	-	6.5	14.1	20.5	-	Φ0.8	M3-THRU	1	10	-	4	5.5	1.6	3	20	5	M2.5X7	0.68	1.18	5.5	2.7	2.7	0.016	0.34
MGW 7C							10	21	31.2	-	Φ1.2	M3X3	1.85	14	-	5.2	6	3.2	3.5	30	10	M3X6	1.37	2.06	15.70	7.14	7.14	0.020	0.51		
MGW 7H	9	1.9	5.5	25	19	3	19	30.8	41	-	Φ1.2	M3X3	1.85	14	-	5.2	6	3.2	3.5	30	10	M3X6	1.77	3.14	23.45	15.53	15.53	0.029			
MGW 9C							21	4.5	12	27.5	39.3	-	Φ1.2	M3X3	2.4	18	-	7	6	4.5	3.5	30	10	M3X8	2.75	4.12	40.12	18.96	18.96	0.040	0.91
MGW 9H	12	2.9	6	30	23	3.5	24	38.5	50.7	-	Φ1.2	M3X3	2.4	18	-	7	6	4.5	3.5	30	10	M3X8	3.43	5.89	54.54	34.00	34.00	0.057			
MGW 12C							15	31.3	46.1	-	Φ1.2	M3X3.6	2.8	24	-	8.5	8	4.5	4.5	40	15	M4X8	3.92	5.59	70.34	27.80	27.80	0.071	1.49		
MGW 12H	14	3.4	8	40	28	6	28	45.6	60.4	-	Φ1.2	M3X3.6	2.8	24	-	8.5	8	4.5	4.5	40	15	M4X8	5.10	8.24	102.70	57.37	57.37	0.103			
MGW 15C							20	38	54.8	5.2	M3	M4X4.2	3.2	42	23	9.5	8	4.5	4.5	40	15	M4X10	6.77	9.22	199.34	56.66	56.66	0.143	2.86		
MGW 15H	16	3.4	9	60	45	7.5	35	57	73.8	5.2	M3	M4X4.2	3.2	42	23	9.5	8	4.5	4.5	40	15	M4X10	8.93	13.38	299.01	122.60	122.60	0.215			

空心轴



○ 空心轴：可根据客户要求定制内径和壁厚

○ 材质：GCr15 轴承钢(SUJ2) 硬度HRC60-62

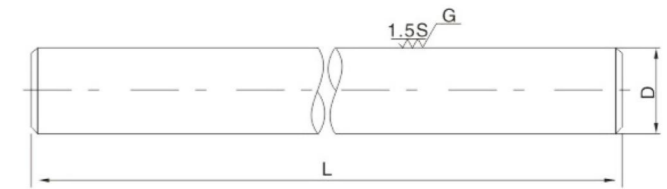
公制空心轴

型号	内径 (mm)	外径 (mm)	精度 (mm)		淬硬层深度
			g6	h6	
SP12	6	12	-0.006-0.017	0-0.011	0.6~1.5
SP13	6	13	-0.006-0.017	0-0.011	0.6~1.5
SP16	10	16	-0.006-0.017	0-0.011	0.8~2.0
SP20	13	20	-0.007-0.020	0-0.013	0.8~2.0
SP25	17	25	-0.007-0.020	0-0.013	0.8~2.0
SP30	20	30	-0.009-0.025	0-0.016	0.8~3.0
SP35	24	35	-0.009-0.025	0-0.016	0.8~3.0
SP40	30	40	-0.009-0.025	0-0.016	0.8~3.0
SP50	38	50	-0.009-0.025	0-0.016	0.8~3.0
SP60	48	60	-0.010-0.029	0-0.019	0.8~3.0

圆柱直线导轨（光轴）系列



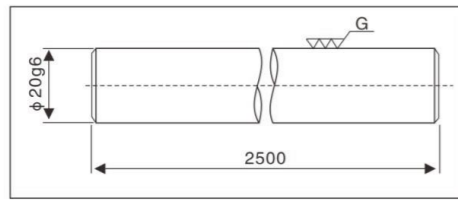
材料：Gcr15
 硬度：HRC62±2
 精度：g6-g5
 粗糙度：Ra0.4-0.8
 硬带深度：0.8mm~3mm
 最大长度：1000mm~7000mm
 直线度：100mm不超过5um
 圆度：不超过0.003mm
 标准型 S：镀锯型 As：不锈钢



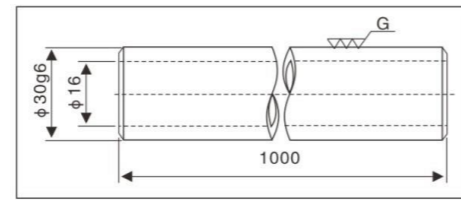
直径 (mm)	型号		精度 (μm)	标准长度 (mm)																	有效硬化层深度	重量 (kg/m)				
	WC (WCAS)	WCS		g6	100	200	300	400	500	600	700	800	900	1000	1200	1500	1800	2000	2500	3000			3500	4000	5000	6000
3	WC3	WCS3	-2~-8																						No more than 1.0	0.06
4	WC4	WCS4																								0.10
5	WC5	WCS5	-4~-12																						Not less than 1.0	0.15
6	WC6	WCS6																								0.23
8	WC8	WCS8																							Not less than 1.0	0.40
10	WC10	WCS10	-5~-14																							0.62
12	WC12	WCS12																							Not less than 1.5	0.89
13	WC13	WCS13	-6~-17																							1.04
16	WC16	WCS16																							Not less than 2.0	1.58
20	WC20	WCS20																								2.47
25	WC25	WCS25	-7~-20																						Not less than 2.5	3.85
30	WC30	WCS30																								5.55
35	WC35	WCS35																							Not less than 3.0	7.55
40	WC40	WCS40	-9~-25																							9.87
50	WC50	WCS50																							Not less than 3.0	15.4
60	WC60	WCS60																								22.2
80	WC80	WCS80	-10~-29																						39.5	
100	WC100	WCS100																							Not less than 3.0	61.7
120	WC120	WCS120	-12~-34																							88.8
150	WC150	WCS150	-14~-39																						139.0	

Notice: 1. The model size with the mark ■ can be customized the length.
 2. We also supply 45# Carbon steel, 20CrMo and 40CrMo raw material type Shaft.

实心轴



空心轴



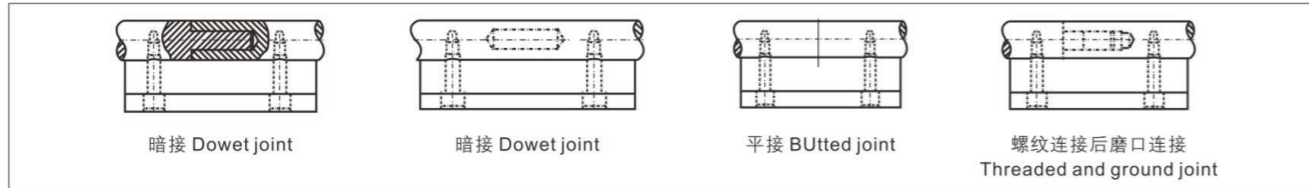
>>> 轴的特殊加工 Spectral Machining for Shaft

我公司可为您提供直径φ3mm~φ150mm，最大长度可达6000mm的各种直线轴。

1. 当您在长度上有特殊要求时，我公司可满足不同长度的加工要求，当您要求长度大于6000mm时，我们还可以为您对接。(见图a)

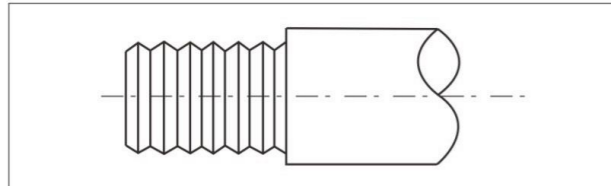
We can supply linear shaft with diameter φ3mm~φ150mm, maximum length up to 6000mm.

1. When you are special requirements on length, we can meet your machining requirements with different length; when you request above 6000mm, we can anti-connect for you. (shown in Fig a)

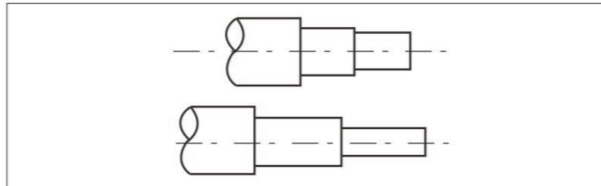


2. 当您有特殊的加工要求时，如车螺纹、车端头打孔、铣键槽、径向打孔、车阶梯轴等。我们都可以为您提供加工，并且这些特殊加工是在热处理镀铬后完成的，因此保证了产品的精度。请把草图或对产品的询价及特殊加工要求告诉我们，我们的服务会令您满意的。

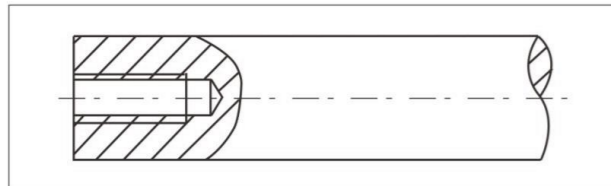
2. When you are special requirements on machining, such as threading, coaxial holes drilled and tapped, radial holes drilled and tapped, reduced shaft diameter etc, we can machine for you, and these special machines are finished after heat treatment and hard chromic so that ensure the precision of product. send us your detailed sketch or blue print for prompt quotation and action, you should be satisfied with our service.



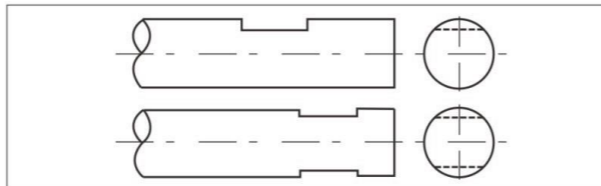
车螺纹 THREADING



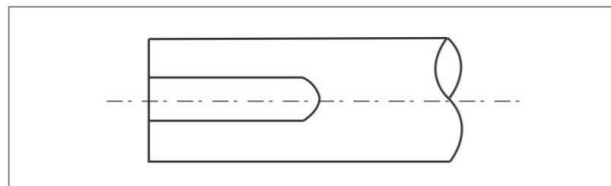
车阶梯轴 REDUCED SHAFT DIAMETER



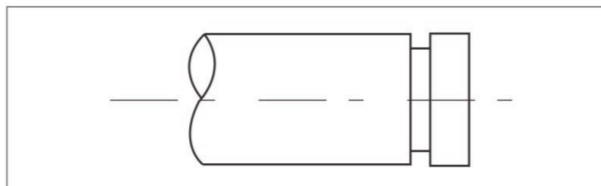
轴端打孔 COAXIAL HOLES DRILLED AND TAPPED



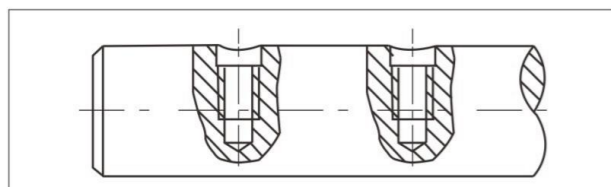
铣槽—单槽或多槽 FLATS - SINGLE OR MULTIPLE



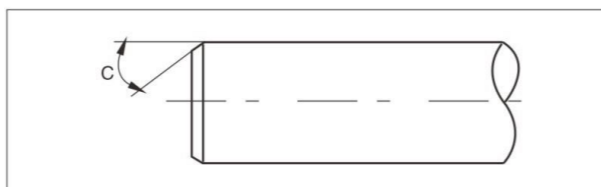
铣键槽 KEY WAY



车卡环槽 SNAP RING GROOVES

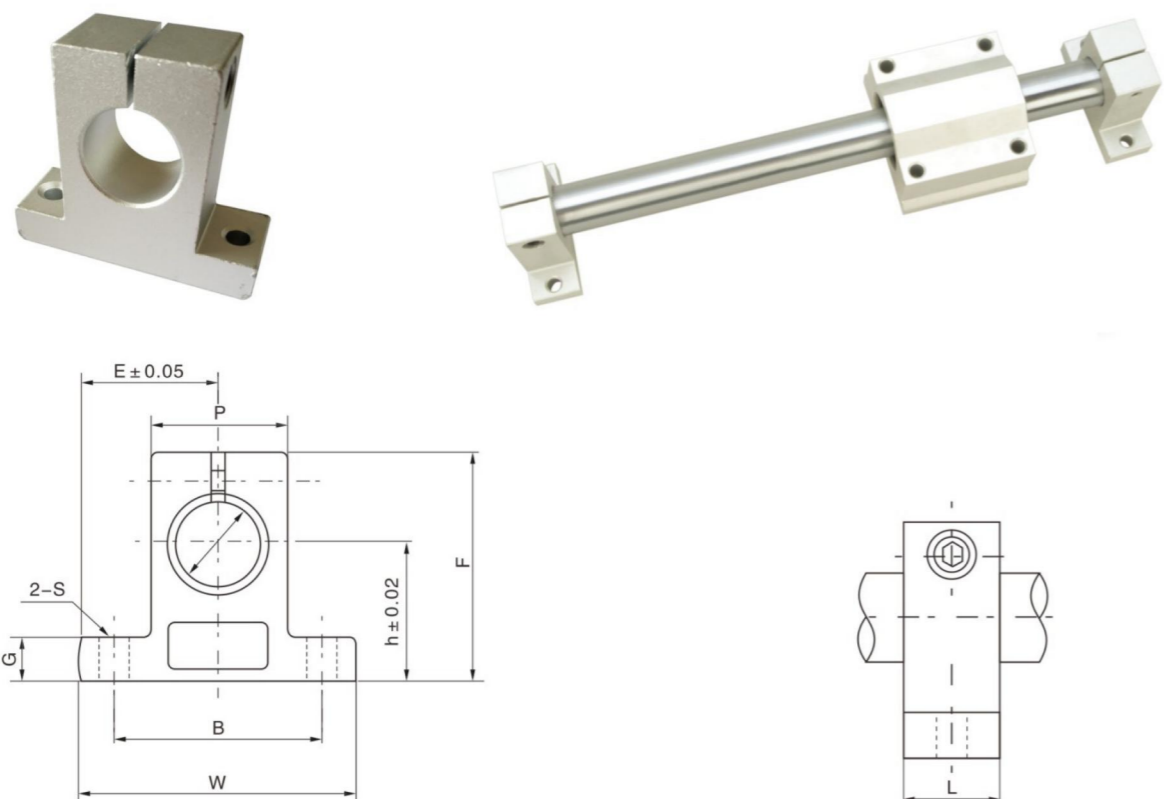


径向打孔 RADIAL HOLES DRILLED AND TAPPED



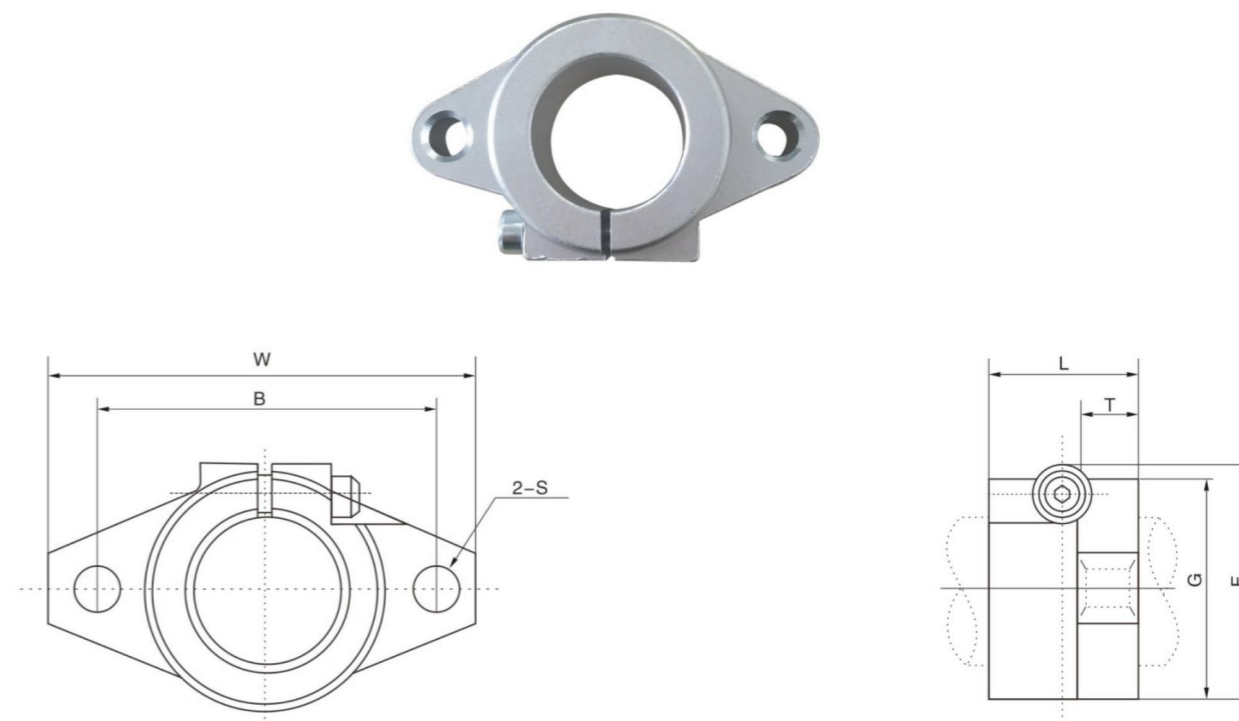
车倒角 CHAMFERING

直线滑动单元支撑系列SK



型号	轴径	尺寸Dimensions (mm)									锁紧螺栓	安装螺栓	重量 Weight (g)
		h	E	W	L	F	G	P	B	S			
SK8	8	20	21	42	14	32.8	6	18	32	5.5	M4	M5	24
SK10	10	20	21	42	14	32.8	6	18	32	5.5	M4	M5	24
SK12	12	23	21	42	14	37.5	6	20	32	5.5	M4	M5	30
SK13	13	23	21	42	14	37.5	6	20	32	5.5	M4	M5	30
SK16	16	27	24	48	16	44	8	25	38	5.5	M4	M5	40
SK20	20	31	30	60	20	51	10	30	45	6.6	M5	M6	70
SK25	25	35	35	70	24	60	12	38	56	6.6	M6	M6	130
SK30	30	42	42	84	28	70	12	44	64	9	M6	M8	180
SK35	35	50	49	98	32	82	15	50	74	11	M8	M10	270
SK40	40	60	57	114	36	96	15	60	90	11	M8	M10	420
SK50	50	70	63	126	40	120	18	74	100	14	M12	M12	750
SK60	60	80	74	148	45	136	18	90	120	14	M12	M12	1100

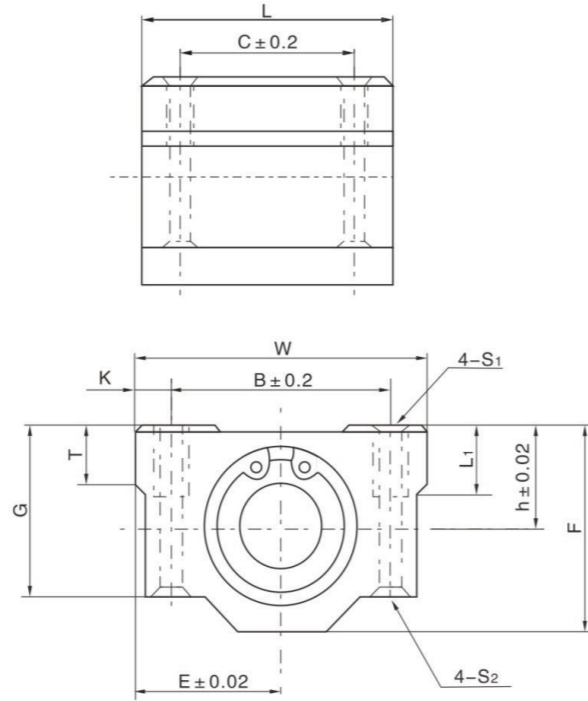
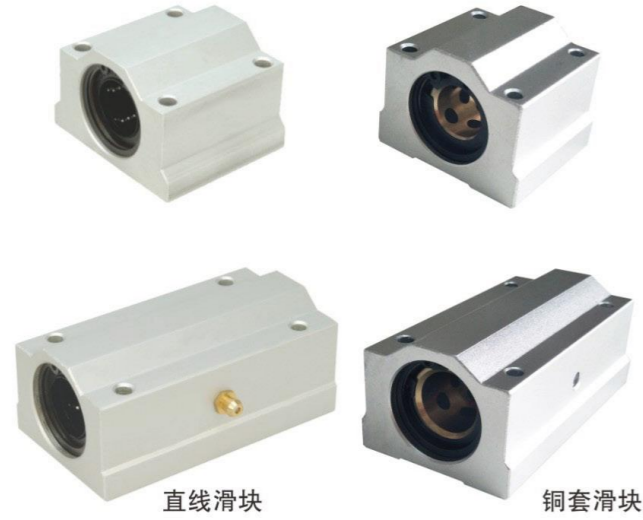
直线滑动单元支撑系列SHF SHF...A



型号	轴径	尺寸Dimensions (mm)							锁紧螺栓	安装螺栓	重量 Weight (g)
		W	L	T	F	G	B	S			
SHF3A	3	43	10	5	24	20	32	5.5	M4	M5	13
SHF4A	4	43	10	5	24	20	32	5.5	M4	M5	13
SHF5A	5	43	10	5	24	20	32	5.5	M4	M5	13
SHF6A	6	43	10	5	24	20	32	5.5	M4	M5	13
SHF8A	8	43	10	5	24	20	32	5.5	M4	M5	13
SHF10A	10	43	10	5	24	20	32	5.5	M4	M5	13
SHF12A	12	47	13	7	28	25	36	5.5	M4	M5	20
SHF13A	13	47	13	7	28	25	36	5.5	M4	M5	20
SHF16A	16	50	16	6	31	28	40	5.5	M4	M5	27
SHF20A	20	60	20	8	37	34	48	7	M5	M6	40
SHF25A	25	70	25	10	42	40	56	7	M5	M6	60
SHF30A	30	80	30	12	50	46	64	9	M6	M8	110
SHF35A	35	92	35	14	58	50	72	12	M8	M10	380
SHF40A	40	102	40	16	67	56	80	12	M10	M8	510
SHF50A	50	122	50	19	83	70	96	14	M12	M12	890
SHF60A	60	140	60	23	95	82	112	14	M12	M12	1500

直线滑动单元滑块系列
 Linear motion ball slide units series

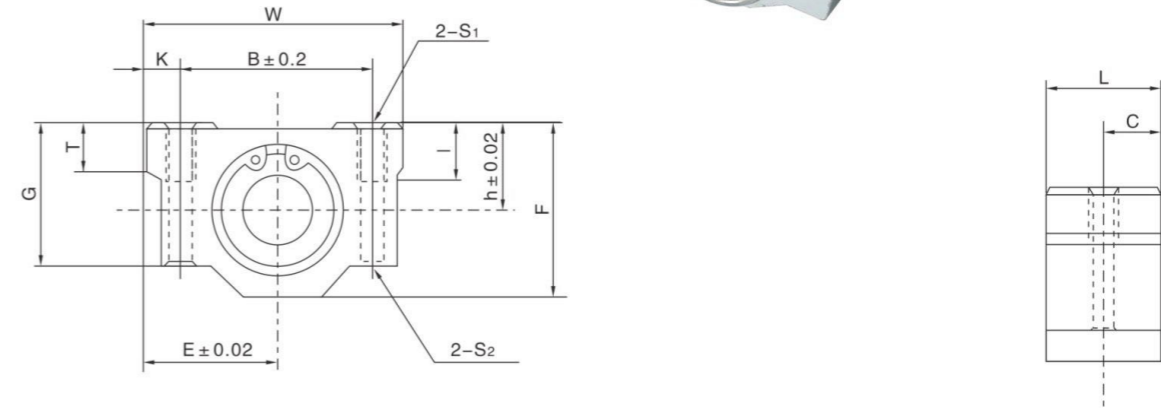
SCS...UU SCS...LUU



滑块型号 Unit Designation	主要尺寸 Dimensions (mm)													配合直线轴承 Slide bush			重量 Weight (kg/m)
	T	h	E	W	L	F	G	B	C	K	S ₁	S ₂	L ₁	型号 Designation	基本额定动载荷 Basic load rating dynamic CN	静额定载荷 Static load rating static CON	
SCS 6UU	6	9	15	30	25	18	15	20	15	5	M4	3.4	8	LM 6UU	206	265	34
SCS 8UU	6	11	17	34	30	22	18	24	18	5	M4	3.4	8	LM 8UU	274	392	52
SCS 10UU	8	13	20	40	35	26	21	28	21	6	M5	4.3	12	LM 10UU	372	549	92
SCS 12UU	8	15	21	42	36	28	24	30.5	26	5.75	M5	4.3	12	LM 12UU	510	784	102
SCS 13UU	8	15	22	44	39	30	24.5	33	26	5.5	M5	4.3	12	LM13UU	510	784	120
SCS 16UU	9	19	25	50	44	38.5	32.5	36	34	7	M5	4.3	12	LM 16UU	774	1180	200
SCS 20UU	11	21	27	54	50	41	35	40	40	7	M6	5.2	12	LM 20UU	882	1370	255
SCS 25UU	12	26	38	76	67	51.5	42	54	50	11	M8	7	18	LM 25UU	980	1570	600
SCS 30UU	15	30	39	78	72	59.5	49	58	58	10	M8	7	18	LM 30UU	1570	2740	735
SCS 35UU	18	34	45	90	80	68	54	70	60	10	M8	7	18	LM 35UU	1670	3140	1100
SCS 40UU	20	40	51	102	90	78	62	80	60	11	M10	8.7	25	LM 40UU	2160	4020	1590
SCS 50UU	25	52	61	122	110	102	80	100	80	11	M10	8.7	25	LM 50UU	3820	7940	3340
SCS 60UU	30	58	66	132	122	114	94	108	90	12	M10	10.7	25	LM 60UU	4700	10000	4270
SCS 8LUU	6	11	17	34	58	22	18	24	42	5	M4	3.4	8	LM 8LUU	274	392	0.1
SCS 10LUU	8	13	20	40	68	26	21	28	46	6	M5	4.3	12	LM 10LUU	372	549	0.18
SCS 12LUU	8	15	21	42	70	28	24	30.5	50	5.75	M5	4.3	12	LM 12LUU	510	784	0.20
SCS 13LUU	8	15	22	44	75	30	24.5	33	50	5.5	M5	4.3	12	Lm13LUU	510	784	0.23
SCS 16LUU	9	19	25	50	85	38.5	32.5	36	60	7	M5	4.3	12	LM 16LUU	774	1180	0.39
SCS 20LUU	11	21	27	54	96	41	35	40	70	7	M6	5.2	12	LM 20LUU	882	1370	0.49
SCS 25LUU	12	26	38	76	130	51.5	42	54	100	11	M8	7	18	LM 25LUU	980	1570	1.165
SCS 30LUU	15	30	39	78	140	59.5	49	58	110	10	M8	7	18	LM 30LUU	1570	2740	1.43
SCS 35LUU	18	34	45	90	155	68	54	70	120	10	M8	7	18	LM 35LUU	1670	3140	2.13
SCS 40LUU	20	40	51	102	175	78	62	80	140	11	M10	8.7	25	LM 40LUU	2160	4020	3.09
SCS 50LUU	25	52	61	122	215	102	80	100	160	11	M10	8.7	25	LM 50LUU	3820	7940	6.53
SCS 60LUU	30	58	66	132	240	114	94	108	180	12	M12	10.7	25	LM 60LUU	4700	10000	9.29

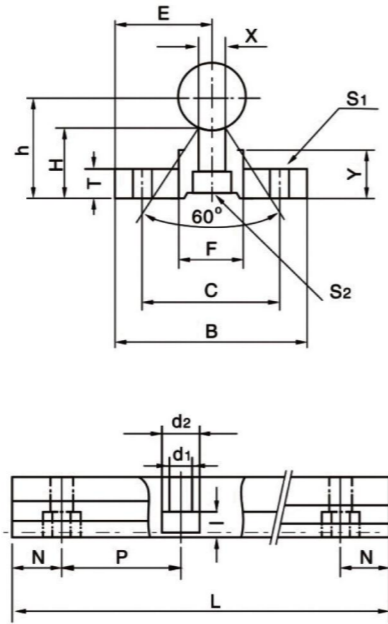
短型箱式滚珠直线滑块
 Box style linear sliding

SC...VUU



型号 Model NO.	轴径 Shaft Diameter	主要尺寸 Dimensions (mm)							安装尺寸 Mounting dimensions						重量 Weight (kg/m)
		h	E	W	L	F	G	T	B	C	K	S ₁	S ₂	l	
SC8VUU	8	11	17	34	15.5	22	18	6	24	7.75	5	M4	3.4	8	0.027
SC10VUU	10	13	20	40	20	26	21	8	28	10	6	M5	4.3	12	0.053
SC12VUU	12	15	21	42	21	28	24	8	30.5	10.5	5.75	M5	4.3	12	0.06
SC13VUU	13	15	22	44	20.6	30	24.5	8	33	10.3	5.5	M5	4.3	12	0.064
SC16VUU	16	19	25	50	24.1	38.5	32.5	9	36	12.05	7	M5	4.3	12	0.11
SC20VUU	20	21	27	54	28.1	41	35	11	40	14.05	7	M6	5.2	12	0.144
SC25VUU	25	26	38	76	38	51.5	42	12	54	19	11	M8	7	18	0.34
SC30VUU	30	30	39	78	39	59.5	49	15	58	20.75	10	M8	7	18	0.424
SC35VUU	35	34	45	90	45	68	54	18	70	22.75	10	M8	7	18	0.626
SC40VUU	40	40	51	102	51	78	62	20	80	28.25	11	M10	8.7	25	1.0
SC50VUU	50	52	61	122	69	102	80	25	100	34.5	11	M10	8.7	25	2.1

直线滑动单元支撑系列
 Linear motion ball slide units series
SBR

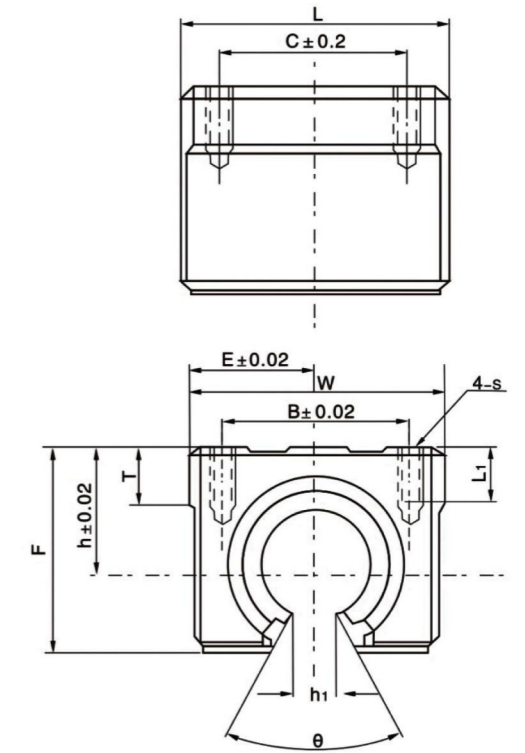


支撑型号 Support Designation	轴径尺寸 Shaft Dimensions	尺寸 Dimensions (mm)											重量 Weight (kg/m)
		E	h	B	H	T	F	X	Y	C	S1	S2 d1xd2x l	
SBR10	Φ10	16	18	32	13	4	12.5	4.7	8.5	22	Φ4.5	5X9X5	1.5
SBR12	Φ12	16	19	32	13	4	12.5	4.7	8.5	22	Φ4.5	5X9X5	1.7
SBR13	Φ13	16	19.5	32	13	4	12.5	4.7	8.5	22	Φ4.5	5X9X5	1.8
SBR16	Φ16	20	25	40	17	5	18.5	8	11.7	30	Φ5.5	5.5X9.5X5.4	2.58
SBR20	Φ20	22.5	27	45	17	5	19	8	10	30	Φ5.5	5.5X9.5X5.4	3.58
SBR25	Φ25	27.5	33	55	20.5	6	21.5	8	12	35	Φ6.6	6.6X11X6.5	5.4
SBR30	Φ30	30	37	60	22	7	26.5	10.3	13	40	Φ6.6	6.6X11X6.5	7.5
SBR35	Φ35	32.5	43	65	25.5	8	28	13	15.5	45	Φ9	9X14X8.6	10
SBR40	Φ40	37.5	48	75	28	g	38	15.5	17	55	Φ9	9X14X8.6	13
SBR50	Φ50	47.5	62	95	37	11	45	20	21	70	Φ11	11X17.5X10.8	21

Support Rail Standard Lengths and Dimensions

型号 Model No.	SBR10	SBR12	SBR13	SBR16	SBR20	SBR25	SBR30	SBR35	SBR40	SBR50
标准长度 Standard Length L (mm)	140	140	140	190	340	250	450	460	460	470
	240	240	240	340	640	450	850	660	660	670
	-	-	-	-	-	-	-	-	860	870
	340	340	340	640	940	850	1250	860	1060	1070
	440	440	440	940	1240	1250	1450	1060	1260	1270
N (mm)	20	20	20	20	20	25	25	30	30	35
P (mm)	100	100	100	150	150	200	200	200	200	200
最大长度Max.Length	5000	5000	5000	6000	6000	6000	6000	6000	6000	6000

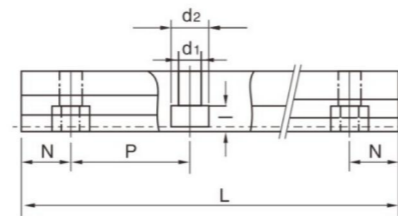
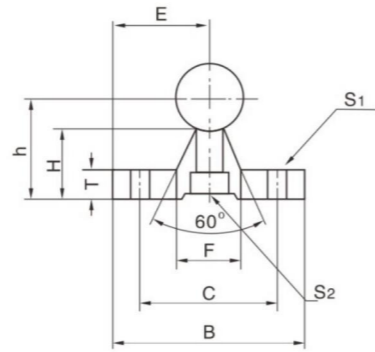
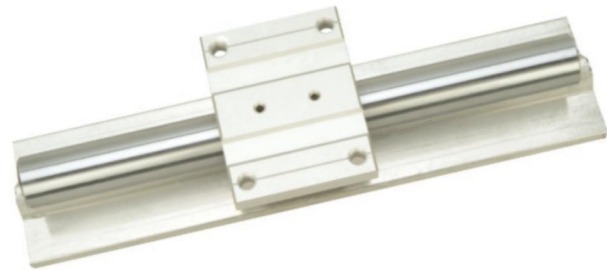
直线滑动单元滑块系列
 Linear motion ball slide units series
SBR...UU SBR...LUU



滑块型号 Unit Designation	尺寸 Dimensions (mm)												配合直线轴承 Slide bush			重量 Weight (g)
	h	E	W	L	F	h1	θ	B	C	s	L1	T	型号 Designation	基本负荷率 Basic Load Rating		
														动 Dynamic C (kgf)	静 Static Co (kgf)	
SBR10UU	15	18	36	32	24	6	80°	25	20	M5	10	7	LM10UU-OP	372	549	70
SBR12UU	17	20.5	41	39	28	7.5	80°	28	26	M5	10	9	LM12UU-OP	420	610	100
SBR13UU	17	20	40	39	27.6	8.5	80°	28	26	M5	10	8	LM13UU-OP	510	784	120
SBR16UU	20	22.5	45	45	33	10	80°	32	30	M5	12	9	LM16UU-OP	774	1180	150
SBR20UU	23	24	48	50	39	10	60°	35	35	M6	12	11	LM20UU-OP	882	1370	200
SBR25UU	27	30	60	65	47	11.5	50°	40	40	M6	12	14	LM25UU-OP	980	1570	450
SBR30UU	33	35	70	70	56	14	50°	50	50	M8	18	15	LM30UU-OP	1570	2740	630
SBR35UU	37	40	80	80	63	16	50°	55	55	M8	18	18	LM35UU-OP	1670	3140	950
SBR40UU	42	45	90	90	72	19	50°	65	65	M10	20	20	LM40UU-OP	2160	4020	1330
SBR50UU	53	60	120	110	92	23	50°	94	80	M10	20	25	LM50UU-OP	3820	7940	3000

SBR12LUU	17	20.5	41	78	27	7.5	80°	28	50	M5	10	9	LM12UU-OP	1200	2000	180
SBR16LUU	20	22.5	45	85	33	10	80°	32	60	M5	12	9	LM16UU-OP	1548	2360	300
SBR20LUU	23	24	48	96	39	10	60°	35	70	M6	12	11	LM20UU-OP	1764	2740	400
SBR25LUU	27	30	60	130	47	11.5	50°	40	100	M6	12	14	LM25UU-OP	1960	3140	900
SBR30LUU	33	35	70	140	56	14	50°	50	110	M8	18	15	LM30UU-OP	3140	5480	1300
SBR35LUU	37	40	80	160	63	16	50°	55	120	M8	18	18	LM35UU-OP	3440	6280	1800
SBR40LUU	42	45	90	175	72	19	50°	65	140	M10	20	20	LM40UU-OP	4320	8040	2700
SBR50LUU	53	60	120	215	92	23	50°	94	160	M10	20	20	LM50UU-OP	7640	15880	6000

直线滑动单元支撑系列TBR



支撑型号	轴径尺寸	尺寸Dimensions (mm)									重量 Weight (kg/m)
		E	h	B	H	T	F	C	S ₁	S ₂	
TBR16	Φ16	25	22.14	50	14.96	6	18.71	37	Φ5.5	5.5X9.5X5.4	2.6
TBR20	Φ20	27.5	29.01	55	19.37	8	18.96	40	Φ5.5	5.5X9.5X5.4	4.3
TBR25	Φ25	32.5	31.97	65	20.14	10	20	45	Φ6.6	6.6X11X6.5	5.9
TBR30	Φ30	37.5	36.52	75	22.45	12	22.96	55	Φ6.6	6.6X11X6.5	8.4

Support Rail Standard Lengths and Dimensions

型号	TBR16	TBR20	TBR25	TBR30
标准长度 Standard Length L	190	340	250	450
	240	640	450	850
	640	940	850	1250
	940	1240	1250	1450
N (mm)	20	20	25	25
P (mm)	150	150	200	200
最大长度	4000	4000	4000	4000

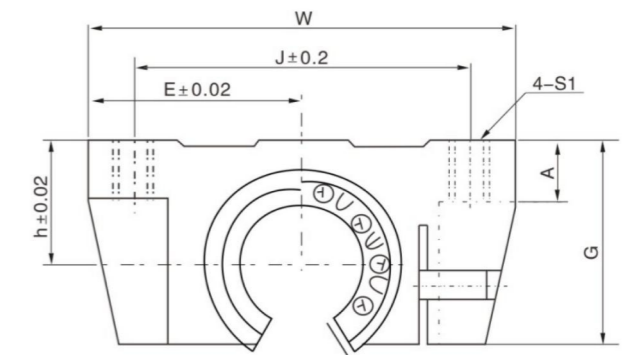
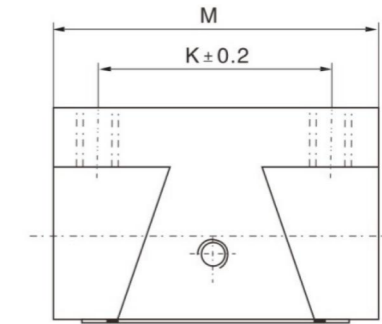
直线滑动单元支撑系列TBR TBR...UU TBR...LUU



直线滑块



铜套滑块

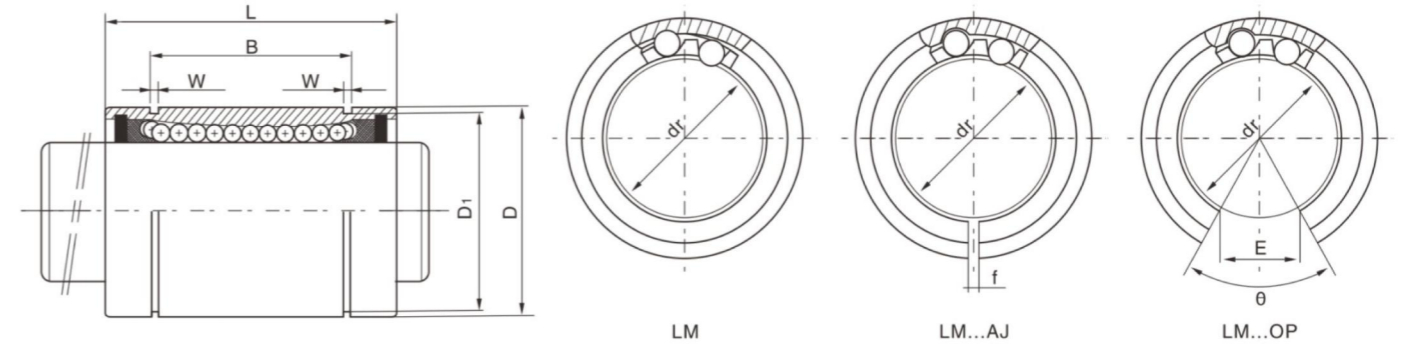


支撑型号	轴承尺寸	基本负荷率		尺寸Dimensions (mm)									配合直线轴承		重量 Weight (kg/m)	
		动	静	W	G	A	M	S ₁	J	K	E	h	Model No.	基本负荷率		
														动		静
TBR16UU	Φ16	392	490	62	26	8	42	M5	50	30	31	18	LM16UU-OP	392	490	200
TBR20UU	Φ20	784	1176	68	31	10	51	M6	54	37	34	21	LM20UU-OP	784	1176	300
TBR25UU	Φ25	1568	2352	82	41	12	65	M8	65	50	41	28	LM25UU-OP	1568	2352	600
TBR30UU	Φ30	1764	2940	91	48	12	75	M8	75	60	45.5	33.5	LM30UU-OP	1764	2940	900

TBR16LUU	Φ16	780	980	62	26	8	85	M5	50	60	31	18	LM16LUU-OP	392	490	400
TBR20LUU	Φ20	1568	2352	68	31	10	96	M6	54	70	34	21	LM20LUU-OP	784	1176	600
TBR25LUU	Φ25	3136	4704	82	41	12	130	M8	65	100	41	28	LM25LUU-OP	1568	2352	1200
TBR30LUU	Φ30	3528	5880	91	48	12	140	M8	75	110	45.5	33.5	LM30LUU-OP	1764	2940	1800

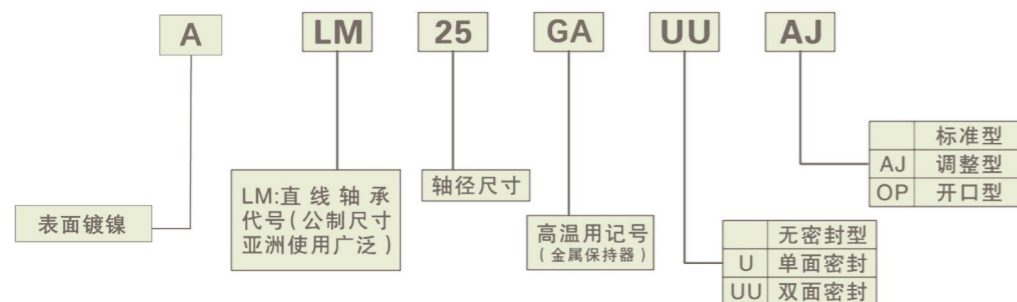
直线轴承系列
 Linear bearing series
LM...UU

直线轴承系列
 Linear bearing series
LM...UU



轴承型号 Designation					尺寸和公差 Major dimensions and tolerance				
LM...UU (标准型)	球列数 Ball circuit	重量 Weight(g)	LM...AJ (间隙调整型)	LM...OP (开放型)	dr (mm)	公差 Tolerance(mm)			
						精度 Precision J (精密级)	精度 Precision P (普通级)		
LM 4UU	4	1.9	-	-	4	0	0		
LM 5UU	4	4	-	-	5	-0.005	-0.008		
LM 6UU	4	8	LM6-AJ	-	6	0	0		
LM 8SUU	4	11	LM8-AJ	-	8				
LM 8UU	4	16	LM8-AJ	-	8				
LM 10UU	4	30	LM10-AJ	LM10-OP	10				
LM 12UU	5	31.5	LM12-AJ	LM12-OP	12				
LM 13UU	5	43	LM13-AJ	LM13-OP	13				
LM 16UU	5	69	LM16-AJ	LM16-OP	16				
LM 20UU	5	87	LM20-AJ	LM20-OP	20				
LM 25UU	6	220	LM25-AJ	LM25-OP	25			-0.007	-0.0010
LM 30UU	6	250	LM30-AJ	LM30-OP	30			0	0
LM 35UU	6	390	LM35-AJ	LM35-OP	35				
LM 40UU	6	585	LM40-AJ	LM40-OP	40				
LM 50UU	6	1580	LM50-AJ	LM50-OP	50				
LM 60UU	6	2000	LM60-AJ	LM60-OP	60				
LM 80UU	6	4420	LM80-AJ	LM80-OP	80				
LM 100UU	6	8600	LM100-AJ	LM100-OP	100				

尺寸和公差 Major dimensions and tolerance											额定负荷 Ratings load		型号 Model No.	
D (mm)	公差 Tolerance(mm)	L (mm)	公差 Tolerance(mm)	B (mm)	公差 Tolerance(mm)	W (mm)	D1 (mm)	f (mm)	E (mm)	θ	动负荷 Dynamic CN	静负荷 Statoc CoN		
8	0	12	0	-	-	-	-	-	-	-	88	127	LM 4UU	
10	-0.009	15	-0.12	10.2	0	1.1	9.6	-	-	-	167	206	LM 5UU	
12	0	19	-0.2	13.5		1.1	11.5	1	-	-	206	265	LM 6UU	
15		17		11.5		1.1	14.3	1	-	-	176	216	LM 8SUU	
15	24	17.5		1.1		14.3	1	-	-	274	392	LM 8UU		
19	0	29		-0.3		22	1.3	18	1	6.8	80°	372	549	LM 10UU
21		30				23	1.3	20	1.5	8	80°	510	784	LM 12UU
23		32				23	1.3	22	1.5	9	80°	510	784	LM 13UU
28		37				26.5	1.6	27	1.5	11	80°	774	1180	LM 16UU
32	0	42		-0.4		30.5	1.6	30.5	1.5	11	60°	882	1370	LM 20UU
40		59				41	1.85	38	2	12	50°	980	1570	LM 25UU
45		64			44.5	1.85	43	2.5	15	50°	1570	2740	LM 30UU	
52		70	49.5		2.1	49	2.5	17	50°	1670	3140	LM 35UU		
60	0	80	-0.3	60.5	2.1	57	3	20	50°	2160	4020	LM 40UU		
80		100		74	2.6	76.5	3	25	50°	3820	7940	LM 50UU		
90	0	110	0	85	3.15	86.5	3	30	50°	4700	10000	LM 60UU		
120	-0.022	140		105.5	4.15	116	3	40	50°	7350	16000	LM 80UU		
150	-0.025	175		125.5	4.15	145	3	50	50°	14120	34800	LM 100UU		



直线轴承系列
 Linear bearing series
LME...UU



LME...UU

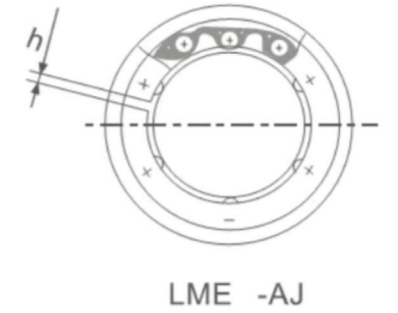
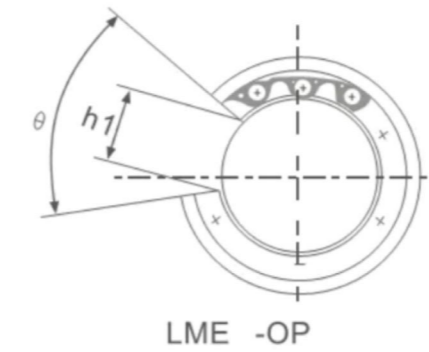
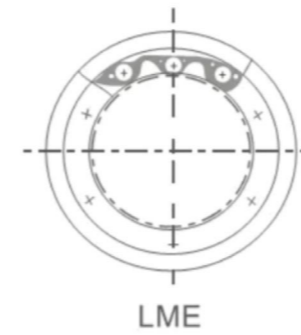
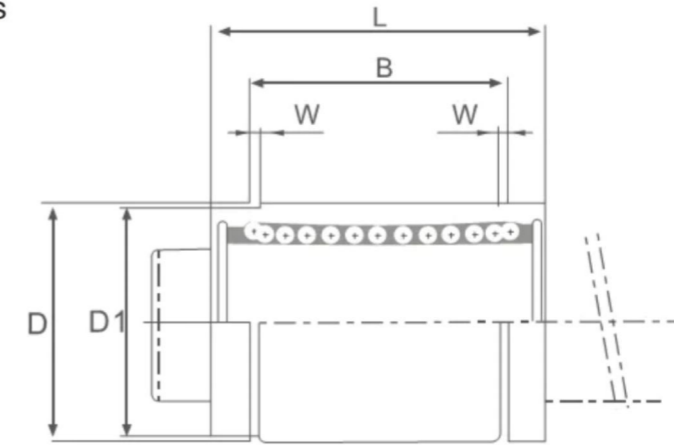


LME...UU-AJ



LME...UU-OP

直线轴承系列
 Linear bearing series
LME...UU



公称型号									dr		
标准型 LME	球列数 Ball circuit	重量 Weight (g)	标准型 LME-AJ	球列数 Ball circuit	重量 Weight (g)	标准型 LME-OP	球列数 Ball circuit	重量 Weight (g)	mm	公差 (um)	
										精度 (Precision)	高 (High)
LME5-UU	4	11	-	-	-	-	-	-	5	-	+8-0
LME8-UU	4	20	-	-	-	-	-	-	8	-	+8-0
LME10-UU	4	29.5	LME10-AJ-UU	4	29	LME10-OP-UU	3	23	10	-	+8-0
LME12-UU	4	41	LME12-AJ-UU	4	40	LME12-OP-UU	3	32	12	-	+8-0
LME16-UU	4	57	LME16-AJ-UU	4	56	LME16-OP-UU	3	44	16	-	+9-1
LME20-UU	5	91	LME20-AJ-UU	5	90	LME20-OP-UU	4	75	20	-	+9-1
LME25-UU	6	215	LME25-AJ-UU	6	212	LME25-OP-UU	5	181	25	-	+11-1
LME30-UU	6	325	LME30-AJ-UU	6	320	LME30-OP-UU	5	272	30	-	+11-1
LME40-UU	6	705	LME40-AJ-UU	6	694	LME40-OP-UU	5	600	40	-	+13-2
LME50-UU	6	1130	LME50-AJ-UU	6	1110	LME50-OP-UU	5	970	50	-	+13-2
LME60-UU	6	2050	LME60-AJ-UU	6	2000	LME60-OP-UU	5	1580	60	-	+13-2
LME80-UU	6	5000	LME80-AJ-UU	6	4860	LME80-OP-UU	5	4240	80	-	+13-2

主要尺寸和公差 Major Dimensions and Tolerance										偏心率 Eccentricity	径向间隙 (最大) Radial Clearance (Max)	额定负荷 Rating		标准型 LME	
D		L		B		W	D1	h	h1			θ	动负荷 Dynamic CN		静负荷 Static CoN
mm	公差 (um)	mm	公差 (um)	mm	公差 (um)	mm	mm	mm	mm						
12	0-8	22	0-200	14.5	0-200	1.1	11.5	-	-	-	12	-3	206	265	LME5-UU
16	0-8	25	0-200	16.5	0-200	1.1	15.2	-	-	-	12	-3	265	402	LME8-UU
19	0-9	29	0-200	22	0-200	1.3	18	1	6.8	80°	12	-4	372	549	LME10-UU
22	0-9	32	0-200	22.9	0-200	1.3	21	1.5	7.5	78°	12	-4	510	784	LME12-UU
26	0-9	36	0-200	24.9	0-200	1.3	24.9	1.5	10	78°	12	-4	578	892	LME16-UU
32	0-11	45	0-200	31.5	0-200	1.6	30.3	2	10	60°	15	-6	862	1.370	LME20-UU
40	0-11	58	0-300	44.1	0-300	1.85	37.5	2	12.5	60°	15	-6	980	1.570	LME25-UU
47	0-11	68	0-300	52.1	0-300	1.85	44.5	2	12.5	50°	15	-8	1570	2.740	LME30-UU
62	0-13	80	0-300	60.6	0-300	2.15	59	3	16.8	50°	17	-8	2160	4.020	LME40-UU
75	0-13	100	0-300	77.6	0-300	2.65	72	3	21	50°	17	-13	3820	7.940	LME50-UU
90	0-15	125	0-400	101.7	0-400	3.15	86.5	3	27.2	54°	20	-13	4700	9.800	LME60-UU
120	0-15	165	0-400	133.7	0-400	4.15	116	3	36.3	54°	20	-20	7350	16.000	LME80-UU

直线轴承系列
 Linear bearing series
LM...LUU LME...LUU

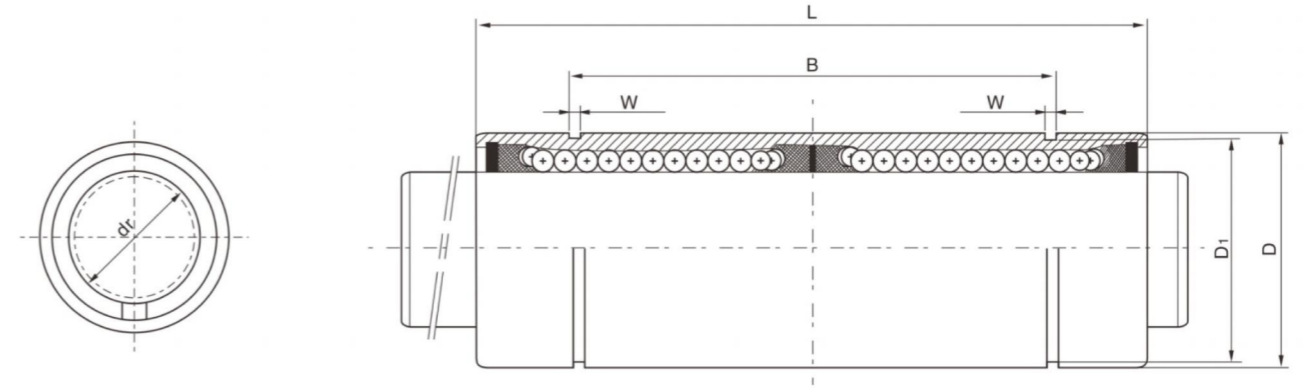


SI UNIT:1N=0.102kgf 单位:mm
 国际单位:1N= 0.102kgf Unit:mm

型号 Model No.	球列数 Ball circuit	重量 Weight(gf)	内径 Inscribed clecle diameter		外径 Outer diameter	
			dr	公差 Tolerance	D	公差 Tolerance
LM6LUU	4	16	6	0 -0.010	12	0
LM8LUU	4	31	8		15	-0.013
LM10LUU	4	62	10		19	0 -0.016
LM12LUU	5	80	12		21	
LM13LUU	5	90	13	23	0 -0.019	
LM16LUU	5	145	16	28		0 -0.022
LM20LUU	5	180	20	32	0 -0.025	
LM25LUU	6	440	25	40		0 -0.012
LM30LUU	6	580	30	45	0 -0.012	
LM35LUU	6	795	35	52		0 -0.012
LM40LUU	6	1170	40	60	0 -0.022	
LM50LUU	6	2100	50	80		0 -0.025
LM60LUU	6	3500	60	90	0 -0.025	

型号 Model No.	球列数 Ball circuit	重量 Weight(gf)	内径 Inscribed clecle diameter		外径 Outer diameter	
			dr	公差 Tolerance	D	公差 Tolerance
LME8LUU	4	31	8	+0.009	16	0 -0.009
LME12LUU	5	80	12	-0.001	22	0 -0.011
LME16LUU	5	145	16	+0.011	26	0 -0.013
LME20LUU	6	180	20	-0.001	32	
LME25LUU	6	440	25	+0.013	40	0 -0.015
LME30LUU	6	580	30	-0.002	47	
LME40LUU	6	1170	40	+0.016 -0.004	62	0 -0.015
LME50LUU	6	3100	50		75	
LME60LUU	6	3500	60	90	0 -0.020	

直线轴承系列
 Linear bearing series
LM...LUU LME...LUU



SI UNIT:1N=0.102kgf 单位:mm
 国际单位:1N= 0.102kgf Unit:mm

长度 Length L	公差 Tolerance	B		W	D ₁	偏心度 Eccentricity (max) μm	径向间隙公差 Radial clearance tolerance	基本承载率 Basic load rating		型号 Model No.
		公差 Tolerance	公差 Tolerance					CN	CoN	
35	0 -0.3	27	0 -0.3	1.1	11.5	15	15	324	529	LM6LUU
45		35		1.1	14.3	15	15	413	784	LM8LUU
55		44		1.3	18	15	15	588	1100	LM10LUU
57		46		1.3	20	15	15	657	1200	LM12LUU
61	0 -0.4	46	0 -0.4	1.3	22	15	15	814	1570	LM13LUU
70		53		1.6	27	15	15	1230	2350	LM16LUU
80		61		1.6	30.5	20	20	1400	2750	LM20LUU
112		82		1.85	38	20	20	1560	3140	LM25LUU
123	0 -0.4	89	0 -0.4	1.85	43	20	20	2490	5490	LM30LUU
135		99		2.1	49	25	25	2650	6470	LM35LUU
151/154		121		2.1	57	25	25	3430	8040	LM40LUU
192		148		2.6	76.5	25	25	6080	15900	LM50LUU
209	170	3.15	86.5	25	25	7650	20000	LM60LUU		

长度 Length L	公差 Tolerance	B		W	D ₁	偏心度 Eccentricity (max) μm	径向间隙公差 Radial clearance tolerance	基本承载率 Basic load rating		型号 Model No.
		公差 Tolerance	公差 Tolerance					CN	CoN	
46	0 -0.3	33	0 -0.3	1.1	15.2	15	15	431	784	LME8LUU
61		45.8		1.3	21			657	1200	LME12LUU
68		49.8		1.3	24.9	1230	2350	LME16LUU		
80		61		1.6	30.5	1400	2750	LME20LUU		
112	0 -0.4	82	0 -0.4	1.85	38	17	20	1560	3140	LME25LUU
123		104.2		1.85	44.5			2490	5490	LME30LUU
151/154		121.2		2.15	59	3430	8040	LME40LUU		
192		155.2		2.65	72	6080	15900	LME50LUU		
209	170	3.15	86.5	7650	20000	LME60LUU				

法兰直线轴承系列
 Flange linear bearing series
LMF...UU LMK...UU



LMF...UU

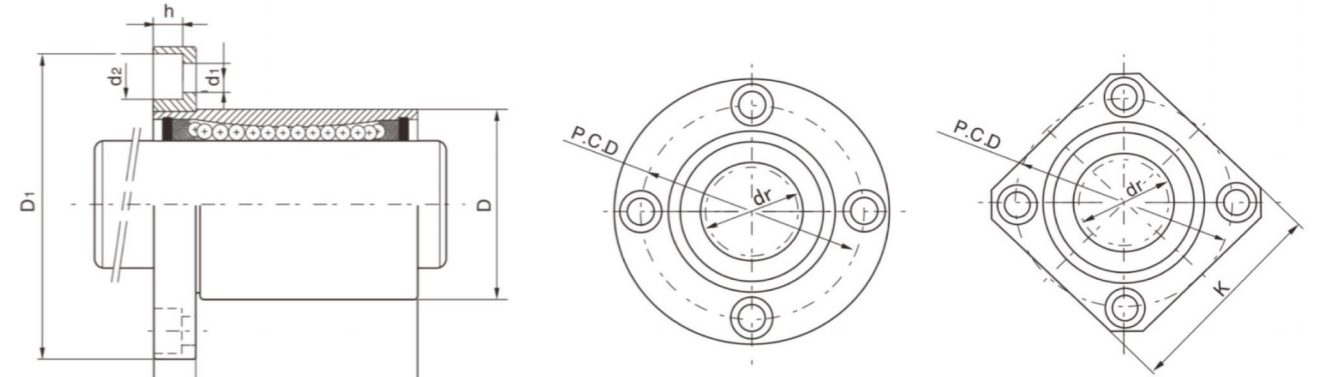
LMK...UU

钢保法兰直线轴承

轴承型号 Designation			内径 Inscribed clecle diameter		外径 Outer diameter		长度 Length		法兰直径 Flange diameter	
LMF...UU	球列数 Ball circuit	重量 Weight(g)	dr	公差 Tolerance	D	公差 Tolerance	L	公差 Tolerance	D ₁	公差 Tolerance
LMF6UU	4	26.5	6	0 -0.009	12	0 -0.011	19	0 -0.2	28	0 -0.2
LMF8SUU	4	34	8		15		17		32	
LMF8UU	4	40	8		15		24		32	
LMF10UU	4	78	10		19		29		40	
LMF12UU	4	76	12		21		30		42	
LMF13UU	4	94	13		23		32		43	
LMF16UU	5	134	16		28		37		48	
LMF20UU	5	180	20		32		42		54	
LMF25UU	6	340	25		40		59		62	
LMF30UU	6	460	30		45		64		74	
LMF35UU	6	795	35	52	70	82				
LMF40UU	6	1054	40	60	80	96				
LMF50UU	6	2200	50	80	100	116				
LMF60UU	6	2960	60	90	110	134				
LMF80UU	6	5800	80	120	140	164				
LMF100UU	6	10600	100	150	175	200				

轴承型号 Designation			内径 Inscribed clecle diameter		外径 Outer diameter		长度 Length		法兰直径 Flange diameter	
LMK...UU	球列数 Ball circuit	重量 Weight(g)	dr	公差 Tolerance	D	公差 Tolerance	L	公差 Tolerance	D ₁	公差 Tolerance
LMK6UU	4	18.5	6	0 -0.009	12	0 -0.011	19	0 -0.2	28	0 -0.2
LMK8SUU	4	23	8		15		17		32	
LMK8UU	4	29	8		15		24		32	
LMK10UU	4	61	10		19		29		40	
LMK12UU	4	56	12		21		30		42	
LMK13UU	4	75	13		23		32		43	
LMK16UU	5	104	16		28		37		48	
LMK20UU	5	145	20		32		42		54	
LMK25UU	6	300	25		40		59		62	
LMK30UU	6	375	30		45		64		74	
LMK35UU	6	692	35	52	70	82				
LMK40UU	6	864	40	60	80	96				
LMK50UU	6	2020	50	80	100	116				
LMK60UU	6	2520	60	90	110	134				
LMK80UU	6	5800	80	120	140	164				
LMK100UU	6	10600	100	150	175	200				

法兰直线轴承系列
 Flange linear bearing series
LMF...UU LMK...UU



SI UNIT:1N=0.102kgf 单位:mm
 国际单位:1N=0.102kgf Unit:mm

H	P.C.D	联接孔 Hole for attachment d ₁ Xd ₂ Xh	法兰的角度公差 Angular Radial tolerance of flange μm	偏心率 Eccentricity (max) μm	径向间隙公差 Radial clearance tolerance	基本承载率 Basic load rating		型号 Model No.
						CN	CoN	
5	20	3.4X6.5X3.3	12	12	-5	200	260	LMF6UU
5	24	3.4X6.5X3.3	12	12	-5	170	220	LMF8SUU
5	24	3.4X6.5X3.3	12	12	-5	260	400	LMF8UU
6	29	4.5X8X4.4	12	12	-5	370	540	LMF10UU
6	32	4.5X8X4.4	12	12	-5	410	590	LMF12UU
6	33	4.5X8X4.4	12	12	-7	500	770	LMF13UU
6	38	4.5X8X4.4	12	12	-7	770	1170	LMF16UU
8	43	5.5X9.5X5.4	15	15	-9	860	1370	LMF20UU
8	51	5.5X9.5X5.4	15	15	-9	980	1560	LMF25UU
10	60	6.6X11X6.5	15	15	-9	1560	2740	LMF30UU
10	67	6.6X11X6.5	20	20	-13	1660	3130	LMF35UU
13	78	9X14X8.6	20	20	-13	2150	4010	LMF40UU
13	98	9X14X8.6	20	20	-13	3820	7930	LMF50UU
18	112	11X17.5X10.8	25	25	-13	4700	9990	LMF60UU
18	142	11X17X11.1	30	30	-20	7350	16000	LMF80UU
20	175	14X20X13.1	40	40	-30	14100	34800	LMF80UU

K	H	P.C.D	联接孔 Hole for attachment d ₁ Xd ₂ Xh	法兰的角度公差 Angular Radial tolerance of flange μm	偏心率 Eccentricity (max) μm	径向间隙公差 Radial clearance tolerance	基本承载率 Basic load rating		型号 Model No.
							CN	CoN	
22	5	20	3.4X6.5X3.3	12	12	-5	200	260	LMK6UU
25	5	24	3.4X6.5X3.3	12	12	-5	170	220	LMK8SUU
25	5	24	3.4X6.5X3.3	12	12	-5	260	400	LMK8UU
30	6	29	4.5X8X4.4	12	12	-5	370	540	LMK10UU
32	6	32	4.5X8X4.4	12	12	-5	410	590	LMK12UU
34	6	33	4.5X8X4.4	12	12	-7	500	770	LMK13UU
37	6	38	4.5X8X4.4	12	12	-7	770	1170	LMK16UU
42	8	43	5.5X9.5X5.4	15	15	-9	860	1370	LMK20UU
50	8	51	5.5X9.5X5.4	15	15	-9	980	1560	LMK25UU
58	10	60	6.6X11X6.5	15	15	-9	1560	2740	LMK30UU
64	10	67	6.6X11X6.5	20	20	-13	1660	3130	LMK35UU
75	13	78	9X14X8.6	20	20	-13	2150	4010	LMK40UU
92	13	98	9X14X8.6	20	20	-13	3820	7930	LMK50UU
106	18	112	11X17.5X10.8	25	25	-13	4700	9990	LMK60UU
136	18	142	11X17X11.1	30	30	-20	7350	16000	LMF80UU
170	20	175	14X20X13.1	40	40	-30	14100	34800	LMF80UU

法兰直线轴承系列
 Flange linear bearing series
LMH...UU



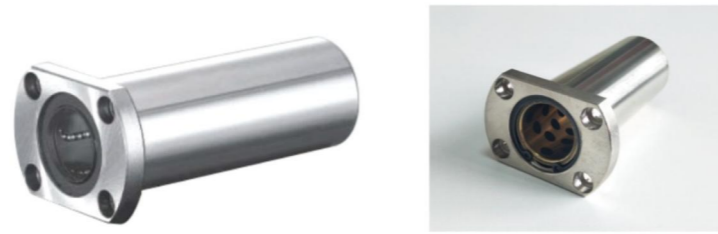
LMH...UU

钢保法兰直线轴承

铜套法兰直线轴承

轴承型号 Designation			内径 Inscribed clecle diameter		外径 Outer diameter		长度 Length		法兰直径 Flange diameter	
LMH...UU	球列数 Ball circuit	重量 Weight(g)	dr	公差 Tolerance	D	公差 Tolerance	L	公差 Tolerance	D ₁	公差 Tolerance
LMH6UU	4	21	6	0 -0.009	12	0	19	0 -0.2	28	0 -0.2
LMH8UU	4	33	8		15	-0.011	24		32	
LMH10UU	4	64	10		19	0	29		40	
LMH12UU	4	68	12		21	0	30		42	
LMH13UU	4	81	13	-0.013	23	0	32	43	0 -0.2	
LMH16UU	5	112	16		28	0	37	48		
LMH20UU	5	167	20	0 -0.010	32	0	42	54	0 -0.3	
LMH25UU	6	325	25		40	-0.016	59	62		
LMH30UU	6	388	30	0 -0.012	45	0	64	74	0 -0.3	
LMH35UU	6	795	35		52	0	70	82		
LMH40UU	6	1054	40	60	-0.019	80	96	0 -0.3		
LMH50UU	6	2200	50	80	0	100	116	0 -0.3		

LMH...LUU

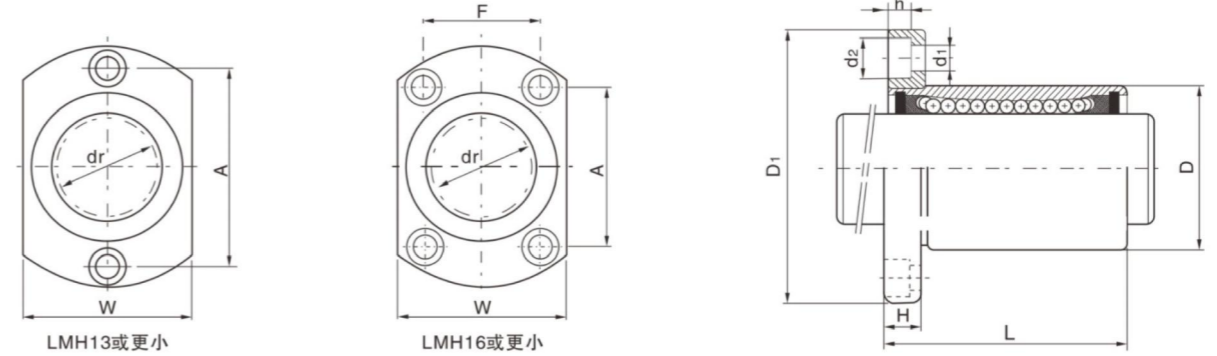


LMH...LUU

铜套法兰直线轴承

轴承型号 Designation			内径 Inscribed clecle diameter		外径 Outer diameter		长度 Length		法兰直径 Flange diameter	
LMH...LUU	球列数 Ball circuit	重量 Weight(g)	dr	公差 Tolerance	D	公差 Tolerance	L	公差 Tolerance	D ₁	公差 Tolerance
LMH6LUU	4	27	6	0 -0.010	12	0	35	0 -0.3	28	0 -0.2
LMH8LUU	4	46	8		15	-0.013	45		32	
LMH10LUU	4	91	10		19	0	55		40	
LMH12LUU	4	92	12		21	0	57		42	
LMH13LUU	4	117	13	-0.016	23	0	61	43	0 -0.2	
LMH16LUU	5	165	16		28	0	70	48		
LMH20LUU	5	247	20	0 -0.012	32	0	80	54	0 -0.3	
LMH25LUU	6	500	25		40	-0.019	112	62		
LMH30LUU	6	583	30	0 -0.015	45	0	123	74	0 -0.3	
LMH35LUU	6	1020	35		52	0	135	82		
LMH40LUU	6	1570	40	60	-0.022	151/154	96	0 -0.3		
LMH50LUU	6	3600	50	80	0	192	116	0 -0.3		

法兰直线轴承系列
 Flange linear bearing series
LMH...UU

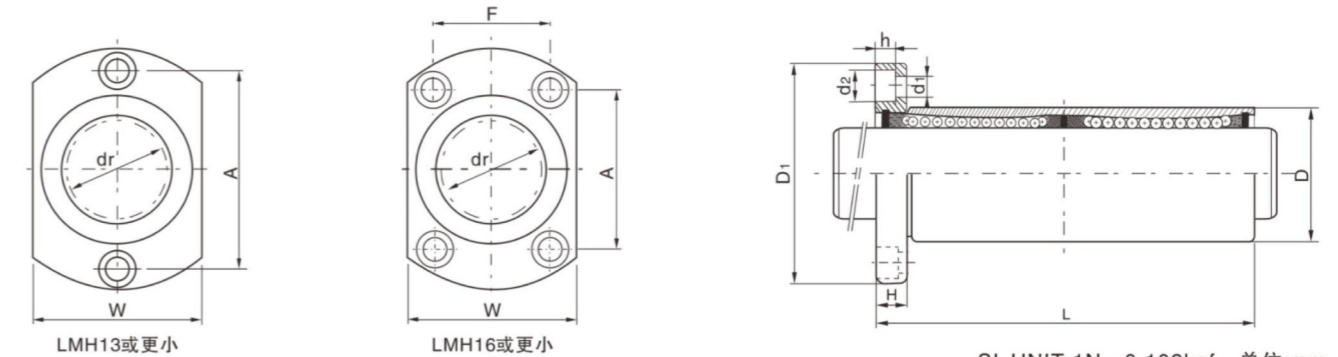


LMH13或更小

LMH16或更小

SI UNIT:1N=0.102kgf 单位:mm
 国际单位:1N=0.102kgf Unit:mm

W	H	A	F	联接孔 Hole for attachment d ₁ Xd ₂ Xh	法兰的角度公差 Angular Radial tolerance of flange μm	偏心率 Eccentricity (max) μm	径向间隙公差 Radial clearance tolerance	基本承载率 Basic load rating		型号 Model No.
								CN	CoN	
18	5	20	-	3.4X6.5X3.3	12	12	-5	200	260	LMH6UU
21	5	24	-	3.4X6.5X3.3	12	12	-5	260	400	LMH8UU
25	6	29	-	4.5X8X4.4	12	12	-5	370	540	LMH10UU
27	6	32	-	4.5X8X4.4	12	12	-5	410	590	LMH12UU
29	6	33	-	4.5X8X4.4	12	12	-7	500	770	LMH13UU
34	6	31	22	4.5X8X4.4	12	12	-7	770	1170	LMH16UU
38	8	36	24	5.5X9.5X5.4	15	15	-9	860	1370	LMH20UU
46	8	40	32	5.5X9.5X5.4	15	15	-9	980	1560	LMH25UU
51	10	49	35	6.6X11X6.5	15	15	-9	1560	2740	LMH30UU
60	10	55	38	6.6X11X6.5	20	20	-13	1660	3130	LMH35UU
70	10	64	45	9X14X8.6	20	20	-13	2150	4010	LMH40UU
86.5	13	80	56	9X14X8.6	20	20	-13	3820	7930	LMH50UU



LMH13或更小

LMH16或更小

SI UNIT:1N=0.102kgf 单位:mm
 国际单位:1N=0.102kgf Unit:mm

W	H	A	F	联接孔 Hole for attachment d ₁ Xd ₂ Xh	法兰的角度公差 Angular Radial tolerance of flange μm	偏心率 Eccentricity (max) μm	径向间隙公差 Radial clearance tolerance	基本承载率 Basic load rating		型号 Model No.
								CN	CoN	
18	5	20	-	3.4X6.5X3.3	15	15	-5	320	520	LMH6LUU
21	5	24	-	3.4X6.5X3.3	15	15	-5	430	780	LMH8LUU
25	6	29	-	4.5X8X4.4	15	15	-5	580	1100	LMH10LUU
27	6	32	-	4.5X8X4.4	15	15	-5	650	1200	LMH12LUU
29	6	33	-	4.5X8X4.4	15	15	-7	810	1570	LMH13LUU
34	6	31	22	4.5X8X4.4	15	15	-7	1230	2350	LMH16LUU
38	8	36	24	5.5X9.5X5.4	20	20	-9	1400	2750	LMH20LUU
46	8	40	32	5.5X9.5X5.4	20	20	-9	1560	3140	LMH25LUU
51	10	49	35	6.6X11X6.5	20	20	-9	2490	5490	LMH30LUU
60	10	55	38	6.6X11X6.5	20	25	-13	2650	6470	LMH35LUU
70	10	64	45	9X14X8.6	20	25	-13	3430	8040	LMH40LUU
86.5	13	80	56	9X14X8.6	20	25	-13	6080	15900	LMH50LUU

法兰直线轴承系列
 Flange linear bearing series
LMF...LUU LMK...LUU



LMF...LUU



LMK...LUU

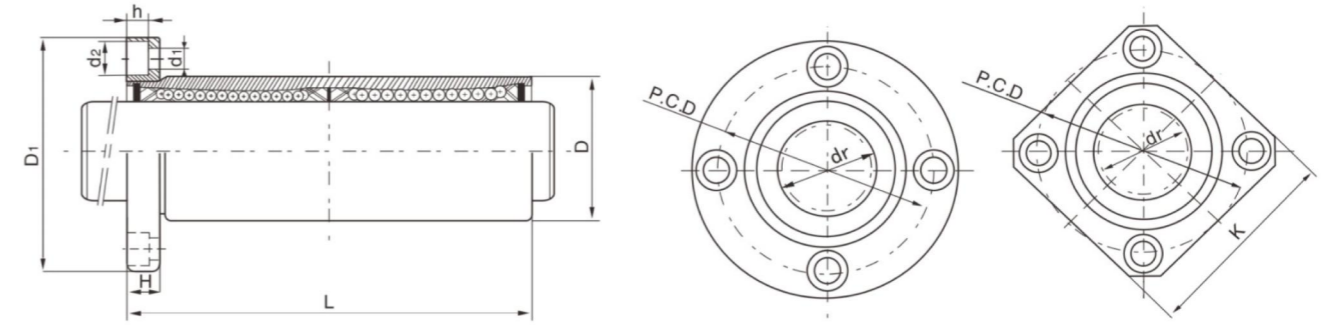


钢保法兰直线轴承

轴承型号 Designation			内径 Inscribed clecle diameter		外径 Outer diameter		长度 Length		法兰直径 Flange diameter	
LMF...LUU	球列数 Ball circuit	重量 Weight(g)	dr	公差 Tolerance	D	公差 Tolerance	L	公差 Tolerance	D ₁	公差 Tolerance
LMF6LUU	4	32	6	0 -0.010	12	0	35	0 -0.3	28	0 -0.2
LMF8LUU	4	53	8		15	-0.013	45		32	
LMF10LUU	4	105	10		19	0	55		40	
LMF12LUU	4	100	12		21	0	57		42	
LMF13LUU	4	130	13	23	-0.016	61	43			
LMF16LUU	5	187	16	28	0	70	48			
LMF20LUU	5	260	20	32	0	80	54			
LMF25LUU	6	515	25	40	0	112	62			
LMF30LUU	6	655	30	45	-0.019	123	74			
LMF35LUU	6	970	35	52	0	135	82			
LMF40LUU	6	1560	40	60	0	151 154	96			
LMF50LUU	6	3500	50	80	-0.022	192	116	0		
LMF60LUU	6	4500	60	90	0	209	134	-0.3		

轴承型号 Designation			内径 Inscribed clecle diameter		外径 Outer diameter		长度 Length		法兰直径 Flange diameter	
LMK...LUU	球列数 Ball circuit	重量 Weight(g)	dr	公差 Tolerance	D	公差 Tolerance	L	公差 Tolerance	D ₁	公差 Tolerance
LMK6LUU	4	26	6	0 -0.010	12	0	35	0 -0.3	28	0 -0.2
LMK8LUU	4	46	8		15	-0.013	45		32	
LMK10LUU	4	88	10		19	0	55		40	
LMK12LUU	4	82	12		21	0	57		42	
LMK13LUU	4	108	13	23	-0.016	61	43			
LMK16LUU	5	160	16	28	0	70	48			
LMK20LUU	5	230	20	32	0	80	54			
LMK25LUU	6	475	25	40	0	112	62			
LMK30LUU	6	575	30	45	-0.019	123	74			
LMK35LUU	6	870	35	52	0	135	82			
LMK40LUU	6	1380	40	60	0	151/154	96			
LMK50LUU	6	3300	50	80	-0.022	192	116	0		
LMK60LUU	6	4060	60	90	0	209	134	-0.3		

法兰直线轴承系列
 Flange linear bearing series



SI UNIT:1N=0.102kgf 单位:mm
 国际单位:1N=0.102kpf Unit:mm

H	P.C.D	联接孔 Hole for attachment d ₁ Xd ₂ Xh	法兰的角度公差 Angular Radial tolerance of flange μm	偏心度 Eccentricity (max) μm	径向间隙公差 Radial clearance tolerance	基本承载率 Basic load rating		型号 Model No.
						CN	CoN	
5	20	3.4X6.5X3.3	15	15	-5	324	529	LMF6LUU
5	24	3.4X6.5X3.3	15	15	-5	431	784	LMF8LUU
6	29	4.5X8X4.4	15	15	-5	588	1100	LMF10LUU
6	32	4.5X8X4.4	15	15	-5	657	1200	LMF12LUU
6	33	4.5X8X4.4	15	15	-7	814	1570	LMF13LUU
6	38	4.5X8X4.4	15	15	-7	1230	2350	LMF16LUU
8	43	5.5X9.5X5.4	20	20	-9	1400	2750	LMF20LUU
8	51	5.5X9.5X5.4	20	20	-9	1560	3140	LMF25LUU
10	60	6.6X11X6.5	20	20	-9	2490	5490	LMF30LUU
10	67	6.6X11X6.5	25	25	-13	2650	6270	LMF35LUU
13	78	9X14X8.6	25	25	-13	3430	8040	LMF40LUU
13	98	9X14X8.6	25	25	-13	6080	15900	LMF50LUU
18	112	11X17.5X10.8	25	25	-13	7650	20000	LMF60LUU

K	H	P.C.D	联接孔 Hole for attachment d ₁ Xd ₂ Xh	法兰的角度公差 Angular Radial tolerance of flange μm	偏心度 Eccentricity (max) μm	径向间隙公差 Radial clearance tolerance	基本承载率 Basic load rating		型号 Model No.
							CN	CoN	
22	5	20	3.4X6.5X3.3	15	15	-5	324	529	LMK6LUU
25	5	24	3.4X6.5X3.3	15	15	-5	431	784	LMK8LUU
30	6	29	4.5X8X4.4	15	15	-5	588	1100	LMK10LUU
32	6	32	4.5X8X4.4	15	15	-5	657	1200	LMK12LUU
34	6	33	4.5X8X4.4	15	15	-7	814	1570	LMK13LUU
37	6	38	4.5X8X4.4	15	15	-7	1230	2350	LMK16LUU
42	8	43	5.5X9.5X5.4	20	20	-9	1400	2750	LMK20LUU
50	8	51	5.5X9.5X5.4	20	20	-9	1560	3140	LMK25LUU
58	10	60	6.6X11X6.5	20	20	-9	2490	5490	LMK30LUU
64	10	67	6.6X11X6.5	25	25	-13	2650	6270	LMK35LUU
75	13	78	9X14X8.6	25	25	-13	3430	8040	LMK40LUU
92	13	98	9X14X8.6	25	25	-13	6080	15900	LMK50LUU
106	18	112	11X17.5X10.8	25	25	-13	7650	20000	LMK60LUU

LMEF...LUU/LMEK...LUU



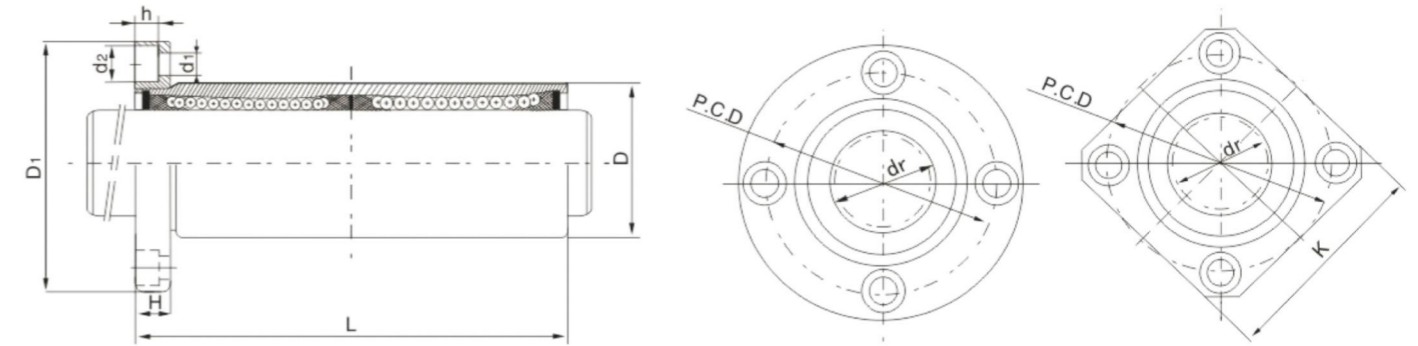
LMEF...LUU



LMEK...LUU

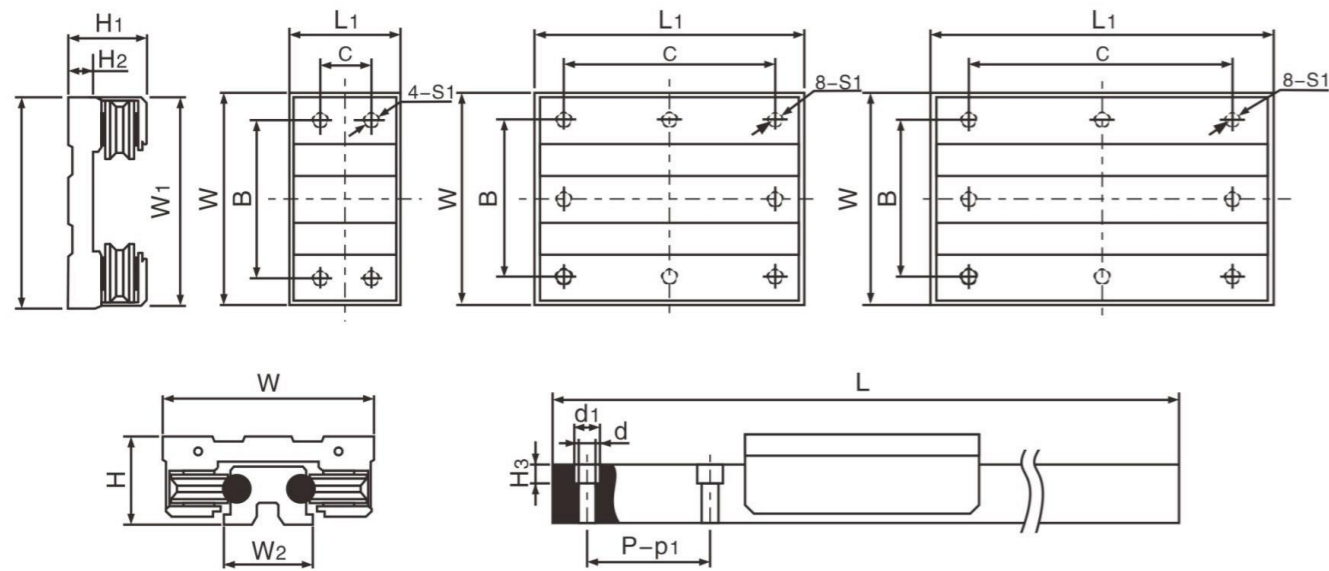
轴径 (mm)	型号		重量 Weight (g)	主要尺寸及公差						
	轴承钢型	不锈钢型		dr		D		D1	L	
	LMEF(K)...LUU	LMESF(K)...LUU		mm	公差 (μm)	mm	公差 (μm)	mm	mm	公差 (μm)
8	LMEF8-LUU LMEK8-LUU	LMESF8-LUU LMESK8-LUU	59	8	+80	16	0-13	32	46	± 300
12	LMEF12-LUU LMEK12-LUU	LMESF12-LUU LMESK12-LUU	110	12	+80	22	0-16	42	61	± 300
16	LMEF16-LUU LMEK16-LUU	LMESF16-LUU LMESK16-LUU	160	16	+9-1	26	0-16	46	68	± 300
20	LMEF20-LUU LMEK20-LUU	LMESF20-LUU LMESK20-LUU	260	20	+9-1	32	0-19	54	80	± 300
25	LMEF25-LUU LMEK25-LUU	LMESF25-LUU LMESK25-LUU	540	25	+11-1	40	0-19	62	112	± 300
30	LMEF30-LUU LMEK30-LUU	LMESF30-LUU LMESK30-LUU	815	30	+11-1	47	0-19	76	123	± 300
40	LMEF40-LUU LMEK40-LUU	LMESF40-LUU LMESK40-LUU	1805	40	+13-2	62	0-22	98	151	± 300
50	LMEF50-LUU LMEK50-LUU	LMESF50-LUU LMESK50-LUU	2820	50	+13-2	75	0-22	112	192	± 300
60	LMEF60-LUU LMEK60-LUU	LMESF60-LUU LMESK60-LUU	4920	60	+13-2	90	0-25	134	209	± 300

LMEF...LUU/LMEK...LUU



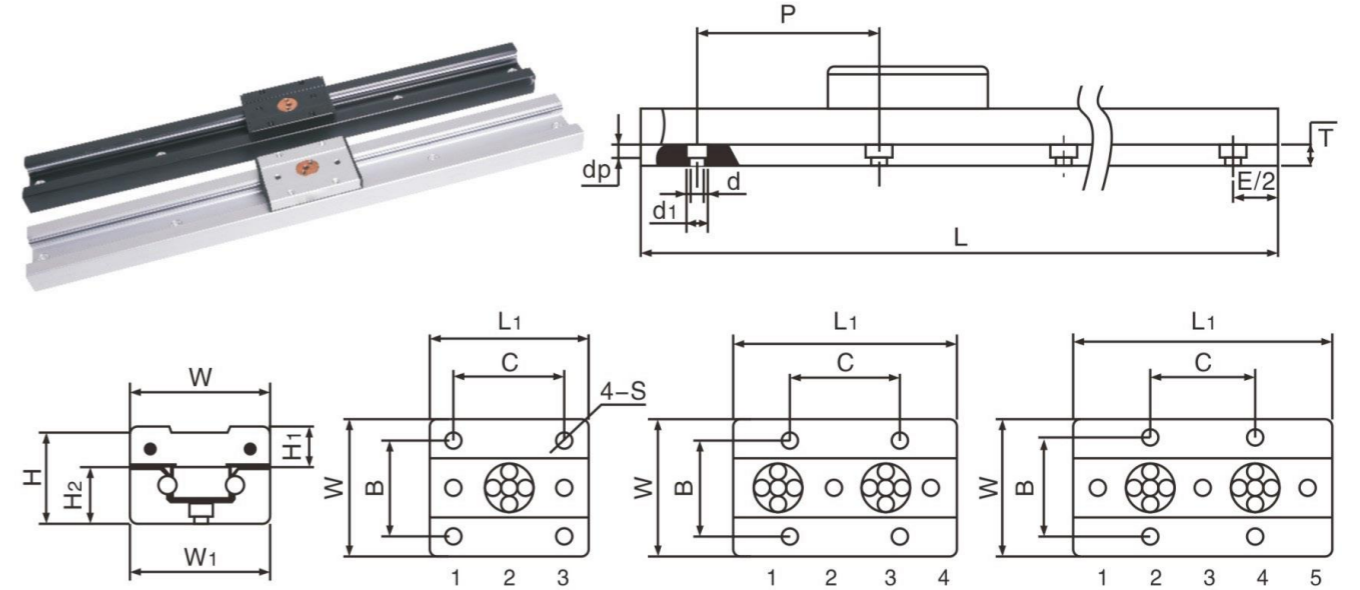
型号		主要尺寸及公差							偏心率 (μm)	直角度 (μm)	基本额定载荷		轴径 (mm)
轴承钢型	不锈钢型	法兰									动负荷	静负荷	
LMEF(K)...LUU	LMESF(K)...LUU	K mm	H mm	PCD mm	d1 mm	d2 mm	h mm						
LMEF8-LUU LMEK8-LUU	LMESF8-LUU LMESK8-LUU	25	5	24	3.5	6	3.1	15	15	430	780	8	
LMEF12-LUU LMEK12-LUU	LMESF12-LUU LMESK12-LUU	32	6	32	4.5	7.5	4.1	15	15	650	1200	12	
LMEF16-LUU LMEK16-LUU	LMESF16-LUU LMESK16-LUU	35	6	36	4.5	7.5	4.1	15	15	1230	2350	16	
LMEF20-LUU LMEK20-LUU	LMESF20-LUU LMESK20-LUU	42	8	43	5.5	9	5.1	17	17	1400	2750	20	
LMEF25-LUU LMEK25-LUU	LMESF25-LUU LMESK25-LUU	50	8	51	5.5	9	5.1	17	17	1560	3140	25	
LMEF30-LUU LMEK30-LUU	LMESF30-LUU LMESK30-LUU	60	10	62	6.6	11	6.1	17	17	2490	5490	30	
LMEF40-LUU LMEK40-LUU	LMESF40-LUU LMESK40-LUU	75	13	80	9	14	8.1	20	20	3430	8040	40	
LMEF50-LUU LMEK50-LUU	LMESF50-LUU LMESK50-LUU	88	13	94	9	14	8.1	20	20	6080	15900	50	
LMEF60-LUU LMEK60-LUU	LMESF60-LUU LMESK60-LUU	106	18	112	11	17	11.1	25	25	7650	20000	60	

双轴芯滚轮直线导轨
 Double axis roller linear guide
LGD



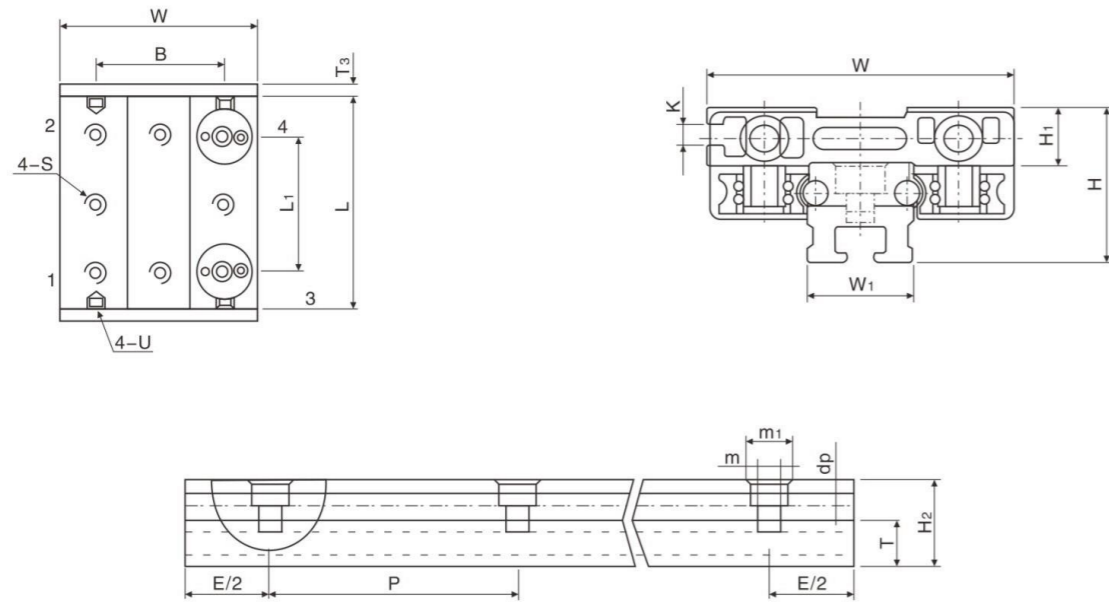
型号	轴径	组合尺寸			滑块尺寸					导轨尺寸						滑块安装孔数量	滑轮数量	基本动力安全负荷 N	基本静力安全负荷 N	重量 (gf/m)	
		H	W	W2	H1	H2	W1	L1	B	C	S1	H3	d1	d	p						p1
LGD6	6	29	60	26	26	12	58	60	40	M5X8	6.5	9.5	5.5	60	4000	4	4	100	130	1.25	
								100	75							4	4	120	150		
LGD8	8	33	67	30	27.5	14	65	70	45	M6X9	8	9.5	5.5	80	4000	4	4	120	190	2.0	
								100	75							4	4	140	210		
LGD12	12	39	82	36	35	12	80	60	36	M6X12	8	10.5	6.5	100	50	6000	4	2	140		3.1
								100	76								8	4	180	230	
								140	116								8/6	4/6	190/210	300/330	
								160	136								8	8	220/260	350/400	
LGD16	16	50	120	50	45	14	118	150	120	M8X14	10	14	8.5	80	6000	8	4	480	540	4.7	
								190	150							8/6	4/6	520	620		

双轴芯滚轮直线导轨
 Double axis roller linear guide
SG



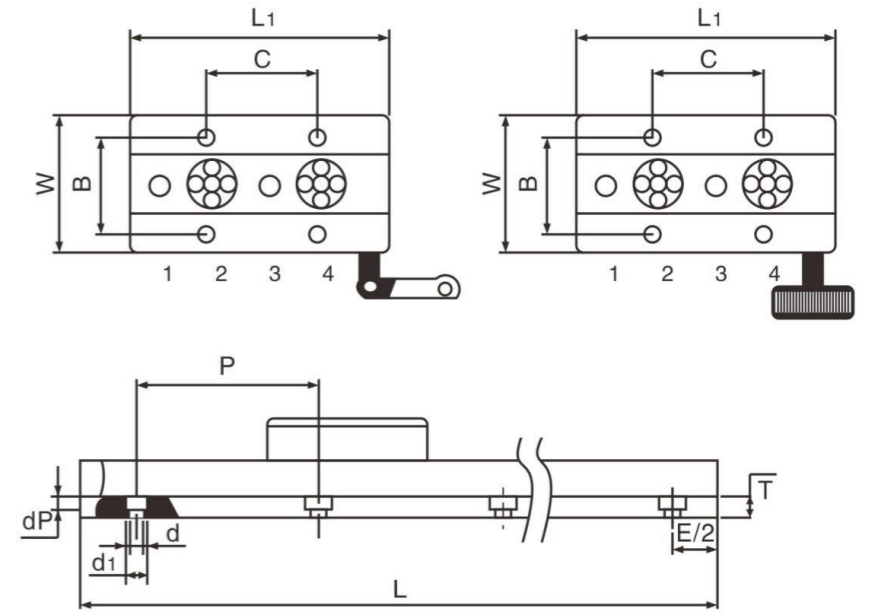
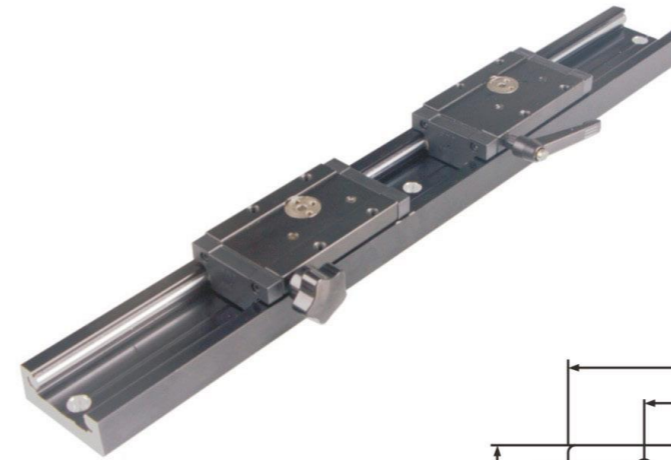
SGR/SGB	SG	全套		导轨SGR										滑座SGB												
		H	W	W1	H2	dp	P	轴径 (直径)	重量 (k/m)	T	d	d1	L1	Lmax	B	C	H1	S	滑轮数量	偏心轮位置	基本动力安全负荷 Yo	基本静力安全负荷 Zo	动力距(N.m)	重量 (gf/m)		
10	-3											47			18.5			3	2	343	322	6.4	6.8	7.1	1402	
	-4	23	28	28	14	3.3	60	5	1.05	7	3.4	6	63	4000	18.5	30	8.5	M4	4	1.3	450	420	7.5	8.1	8.6	1621
	-5												80		40			5	2.4	465	435	8.3	8.8	9.4	1722	
15N	-3											60						3	2	490	460	10.2	9.2	9.8	1846	
	-4	32	38	38	18.5	5.5	120	6	1.65	7	4.5	8	80	4000	26	26	12	M5	4	1.3	700	660	14.5	13.2	14.0	2146
	-5												100					5	2.4	980	980	20.3	37	39	2216	
15	-3											52						3	2	490	460	13.8	7.4	7.8	2306	
	-4	32	46	46	18.5	5.5	120	6	1.76	8	4.5	8	72	4000	32	36	12	M5	4	1.3	700	660	19.8	21.1	22.4	2366
	-5												86					5	2.4	980	700	27.7	44.3	47	2426	
20N	-3											80						3	2	820	980	29.4	25.4	18.2	2739	
	-4	36	47	47	22.5	5.5	120	8	2.25	8	5.5	9.5	104	4000	38	30	12	M6	4	1.3	1.0	1.4	42	72.8	52	2799
	-5												130					5	2.4	4.4	19.6	82.4	129	92.4	2859	
20	-3											80						3	2	820	980	42.1	15.5	15.4	3568	
	-4	36	60	60	22.5	5.5	120	8	2.75	8	5.5	9.5	104	4000	50	40	12	M6	4	1.3	1.0	1.4	60.2	61.6	44	3628
	-5												130					5	2.4	1.4	19.6	84.4	129	92.4	3688	
25	-3											100						3	2	12.6	14.7	68	49	42	4909	
	-4	44	70	70	26	6.5	120	10	3.88	9	6.5	11	130	4000	57	45	15	M8	4	1.3	18.0	21.0	96.6	139	119	5009
	-5												160					5	2.4	25.2	29.4	135	291	249	5109	
35	-3											135						3	2	28.0	28.0	160	126	128	8243	
	-4	56	100	90	35	8	160	12	6.45	11	8.5	14	180	6000	82	62	18	M12	4	1.3	40.0	40.0	228	360	360	8643
	-5												225					5	2.4	56.0	56.0	319	758	456	9043	
50	-4	98	148	150	70	16	200	20	21.1	25	16	23	245	2000	115	150	25	M14	4	2/3	150.0	150.0	940	2900	1600	54000

外置双轴芯导轨系列
 Rectangle wheel linear rail accessories
OSG



OSG	全套		导轨OSGR													滑座OSGB										
	H	W	W ₁	H ₂	dp	P	轴 直径	重量 (k/m)	T	m ₁	m	W	H ₁	L	B	L ₁	S	U	K	基本动力 安全负荷(N)			动力距(N.m)			重量 (gf/m)
																				Y ₀	Z ₀	Mx ₀	My ₀	Mz ₀		
OSG-20	30	60	26	18	5.5	60	6	1230	12	9.5	5.5	60	12	60	38	38	M5	M5	4.2	700	660	23.03	33.41	35.47	120	
OSG-25	35	80	30	21	6.5	60	8	2015	14	11	6.5	80	12	80	51	51	M6	M6	4.2	1000	1400	62.76	95.2	68	240	
OSG-30	40	100	36	25	6.5	60	10	2987	15	11	6.5	100	16.5	100	61	61	M8	M6	5.2	1800	2100	105.98	172.54	147.8	520	
OSG-40	50	130	47	31.5	8.5	60	12	5216	20	14	9	130	18	130	84	84	M10	M6	6.2	4000	4000	280.64	448	448	113	

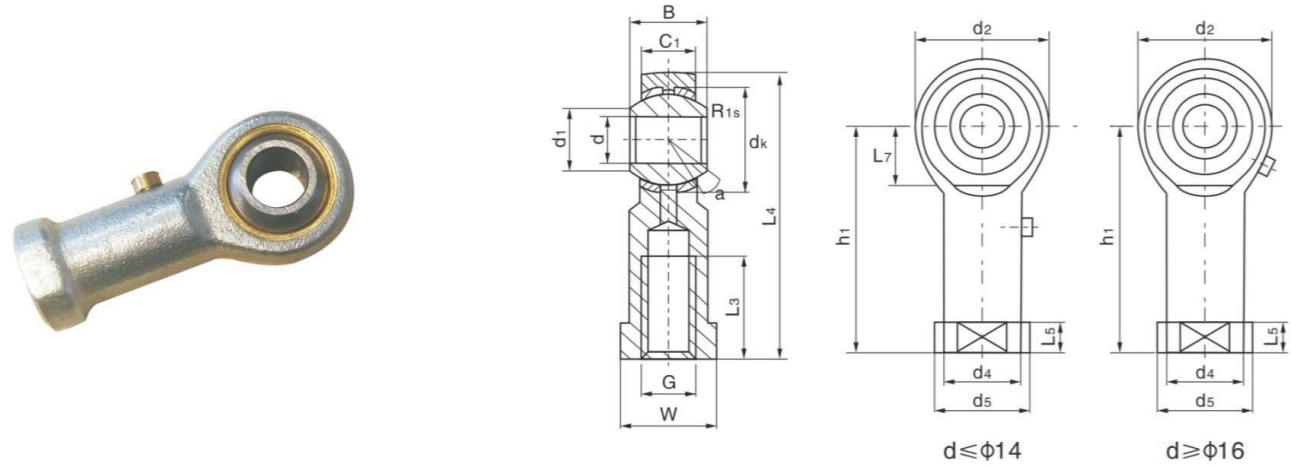
黑色SGR锁紧系列
 Black SGR lock series
SGR



SG	全套	导轨SGR													滑块SGB										
SGRSGB	H	W	W ₁	H ₂	dp	P	轴 直径	重量 (k/m)	T	d	d ₁	L ₁	Lmax	B	C	H ₁	S	滑轮 数量	偏心轮 位置	基本动力 Yo	安全负荷 Zo	动力距(N.m)	重量 (gf/m)		
10 -4	23	28	28	14	3.3	60	5	1.05	7	3.4	6	80	4000	18.5	40	8.5	M4	4	2.4	450	420	7.5	8.1	8.6	1621
15N -4	32	44	38	18.5	5.5	120	6	1.65	7	4.5	8	100	4000	26	26	12	M5	4	2.4	700	660	14.5	13.2	14.0	2146
15 -4	32	46	46	18.5	5.5	120	6	1.76	8	4.5	8	86	4000	32	36	12	M5	4	2.4	700	660	19.8	21.1	22.4	2426
20N -4	36	47	47	22.5	5.5	120	8	2.25	8	5.5	9.5	130	4000	38	30	12	M6	4	2.4	1.0	1.4	42	72.8	52	2859
20 -4	36	60	60	22.5	5.5	120	8	2.75	8	5.5	9.5	130	4000	50	40	12	M6	4	2.4	1.0	1.4	60.2	61.6	44	3688
25 -4	44	70	70	26	6.5	120	10	3.88	9	6.5	11	160	4000	57	45	15	M6	4	2.4	18.0	21.0	96.6	139	119	5009

内螺纹镶垫杆端关节轴承系列
 Inlaid line rod ends with female thread series

PHS



型号 Bearing Number	尺寸mm (Dimensions)														负荷KN Load ratings		重量 Weight ≈ kg	
	d H7	B	dk	C1 max	d2 max	G 6H	h1	L3 min	L4 max	L5	W	d4	d5	R1s min	a°	动dyn.C		静stat.Co
PHS 5	5	8	11.11	6	16	M5x0.8	27	10	35	4	9	8.5	11	0.3	13	3.25	5.7	0.016
PHS 6	6	9	12.7	6.75	18	M6x1.0	30	12	39	5	11	10	13	0.3	13	4.3	7.2	0.022
PHS 8	8	12	15.875	9	22	M8x1.25	36	16	47	5	14	12.5	16	0.3	14	7.2	11.6	0.047
PHS 10	10	14	19.05	10.5	26	M10x1.5	43	20	56	6.5	17	15	19	0.3	13	10	14.5	0.077
PHS 10-1	10	14	19.05	10.5	26	M10x1.25	43	20	56	6.5	17	15	19	0.3	13	10	14.5	0.077
PHS 12	12	16	22.225	12	30	M12x1.75	50	22	65	6.5	19	17.5	22	0.3	13	13.4	17	0.10
PHS 12-1	12	16	22.225	12	30	M12x1.25	50	22	65	6.5	19	17.5	22	0.3	13	13	17	0.10
PHS 14	14	19	25.4	13.5	34	M14x2.0	57	25	74	8	22	20	25	0.3	16	17	24	0.16
PHS 14-1	14	19	25.4	13.5	34	M14x1.5	57	25	74	8	22	20	25	0.3	16	17	24	0.16
PHS 16	16	21	28.575	15	40	M16x2.0	64	28	84	8	24	22	27	0.3	15	21.6	28.5	0.16
PHS 16-1	16	21	28.575	15	40	M16x1.5	64	28	84	8	24	22	27	0.3	15	21.6	28.5	0.22
PHS 18	18	23	31.75	16.5	44	M18x1.5	71	32	93	10	27	25	31	0.3	15	26	42.5	0.32
PHS 20	20	25	34.925	18	50	M20x1.5	77	33	102	10	30	27.5	34	0.3	14	31.5	42.5	0.42
PHS 22	22	28	38.1	20	54	M22x1.5	84	37	111	12	32	30	38	0.3	15	38	57	0.54
PHS 25	25	31	42.85	22	60	M24x2.0	94	42	124	12	36	33.5	42	0.3	15	47.5	68	0.73
PHS 28	28	35	47.6	24	66	M27x2.0	103	48	136	14	41	37	46	0.3	15	58	75	0.98
PHS 30	30	37	50.8	25	70	M30x2.0	110	51	145	15	41	40	50	0.3	17	64	88	1.1
PHS 30-1	30	37	50.8	25	70	M27x2.0	110	51	145	15	41	40	50	0.3	17	64	88	1.1

-尺寸单位为mm Dimensions in mm.

-若是左旋螺纹, 轴承型号和螺纹标记应加“L”或“左”, 例如: PHSL20 M20x1.5左-6H。

-For left-hand thread, suffix “L” is added to bearing number and thread sign, e.g. PHSL20 M20x1.5L-6H.

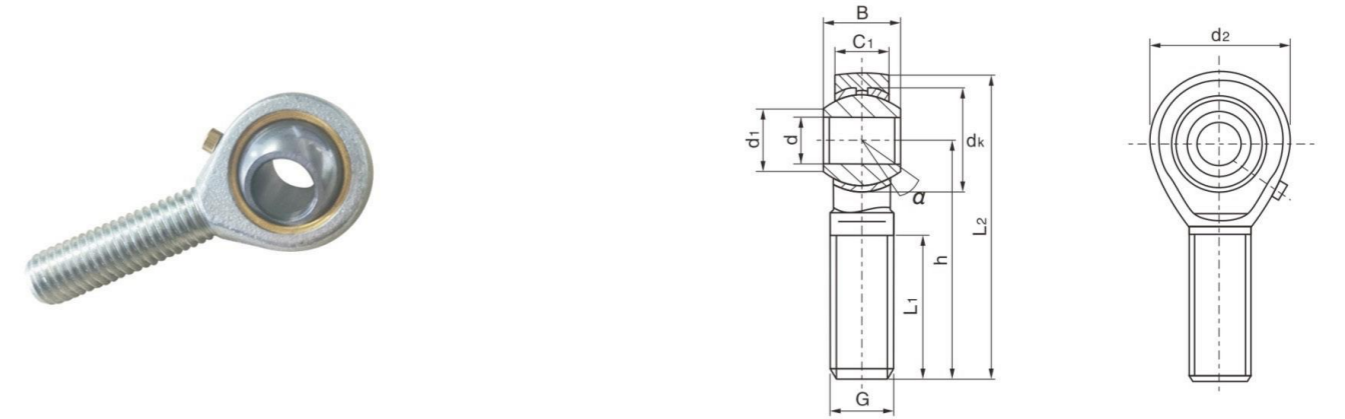
-滑动摩擦副: 钢/铜 Sliding contact surfaces: Steel/Bronze.

-设计结构特点: 杆端材料为碳钢, 镀环保白锌, 滑动表面镶垫青铜衬垫, 内圈(球)材料为轴承钢, 球面镀铬, 可通过油嘴或杆端眼润滑。具有较好的轴向载荷, 本系列产品可以用不锈钢制造订货时在型号前加“S”。

Design and application features: Rod end of steel and zinc coated, with male or female thread; spherical surface with bronze liner; innering of carbon chromium steel, spherical surface with chromium plating; Can be lubricated via a nipple or a hole in the rod end. It has characteristics of large load capability, easy mounting and dismounting and mechanism simplification.

外螺纹镶垫杆端关节轴承系列
 Inlaid line rod ends with male thread series

POS



型号 Bearing Number	尺寸mm (Dimensions)												负荷KN Load ratings		重量g Weight
	d H7	B	dk	C1 max	d2 max	G 6H	h	L1 min	L2 max	R1s min	a°	动dyn.C	静stat.Co		
POS 5	5	8	11.11	6	16	M5x0.8	33	20	41	0.3	13	3.25	5.7	0.013	
POS 6	6	9	12.7	6.75	18	M6x1.0	36	22	45	0.3	13	4.3	7.2	0.020	
POS 8	8	12	15.875	9	22	M8x1.25	42	25	53	0.3	14	7.2	11.6	0.030	
POS 10	10	14	19.05	10.5	26	M10x1.5	48	29	61	0.3	13	10	14.5	0.055	
POS 12	12	16	22.225	12	30	M12x1.75	54	33	69	0.3	13	13.4	17	0.085	
POS 14	14	19	25.4	13.5	34	M14x2.0	60	36	77	0.3	16	17	24	0.14	
POS 16	16	21	28.575	15	40	M16x2.0	66	40	86	0.3	15	21.6	28.5	0.21	
POS 18	18	23	31.75	16.5	44	M18x1.5	72	44	94	0.3	15	26	42.5	0.28	
POS 20	20	25	34.925	18	50	M20x1.5	78	47	103	0.3	14	31.5	52.5	0.38	
POS 22	22	28	38.1	20	54	M22x1.5	84	51	111	0.3	15	38	57	0.48	
POS 25	25	31	42.85	22	60	M24x2.0	94	57	124	0.3	15	47.5	68	0.64	
POS 28	28	35	47.6	24	66	M27x2.0	103	62	136	0.3	15	58	75.5	0.96	
POS 30	30	37	50.8	25	70	M30x2.0	110	66	145	0.3	17	64	88.6	1.1	

-尺寸单位为mm Dimensions in mm.

-若是左旋螺纹, 轴承型号和螺纹标记应加“L”或“左”, 例如: POSL20。

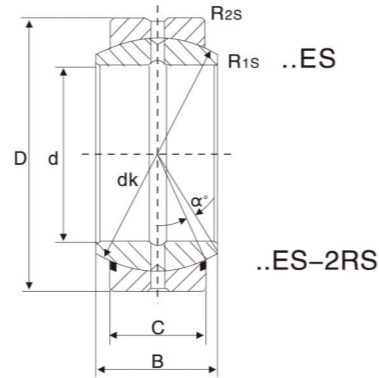
-For left-hand thread, suffix “L” is added to bearing number and thread sign, e.g. POSL20.

-滑动摩擦副: 钢/铜 Sliding contact surfaces: Steel/Bronze.

-设计结构特点: 杆端材料为碳钢, 镀环保白锌, 滑动表面镶垫青铜衬垫, 内圈(球)材料为轴承钢, 球面镀铬, 可通过油嘴或杆端眼润滑。具有较好的轴向载荷, 本系列产品可以用不锈钢制造订货时在型号前加“S”。

Design and application features: Rod end of steel and zinc coated, with male or female thread; spherical surface with bronze liner; innering of carbon chromium steel, spherical surface with chromium plating; Can be lubricated via a nipple or a hole in the rod end. It has characteristics of large load capability, easy mounting and dismounting and mechanism simplification.

GE..E(S),GE..ES 2RS

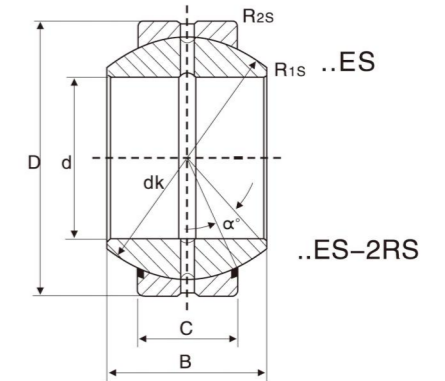


Maintenance required

- 外圈有一道轴向峰
Outer ring with single split in axial direction
- ES 型内圈和外圈有润滑油槽和油孔
Lubricating grooves and holes in the outer and inner rings of type ES
- 2RS 型外圈两面带密封圈
Outer ring of type-2RS with lip seals in both side
- 内外圈表面磷化处理
Both outer and inner rings are properly phosphate treated

型号 Part Number	尺寸mm (Dimensions)									负荷KN Load ratings		重量 g Weight
	d	D	B	C	D _k	R _{1s} _{min}	R _{2s} _{min}	α	动dyn.c	静stat.co		
GE6E	6	14	6	4	10	0.3	0.3	13	3.4	17	4	
GE8E	8	16	8	5	13	0.3	0.3	15	5.5	27.5	7	
GE10E	10	19	9	6	16	0.3	0.3	12	8.15	40.5	11	
GE12E	12	22	10	7	18	0.3	0.3	11	10.8	54	16	
GE15ES	GE15ES 2RS	15	26	12	9	22	0.3	0.3	8	17	85	25
GE16ES	GE16ES 2RS	16	30	14	10	25	0.3	0.3	10	21.2	106	41
GE17ES	GE17ES 2RS	17	30	14	10	25	0.3	0.3	10	21.2	106	41
GE20ES	GE20ES 2RS	20	35	16	12	29	0.6	0.3	9	30	146	61
GE25ES	GE25ES 2RS	25	42	20	16	35.5	0.6	0.6	7	48	240	110
GE30ES	GE30ES 2RS	30	47	22	18	40.7	0.6	0.6	6	62	310	140
GE35ES	GE35ES 2RS	35	55	25	20	47	0.6	1.0	6	80	400	220
GE40ES	GE40ES 2RS	40	62	28	22	53	0.6	1.0	7	100	500	300
GE45ES	GE45ES 2RS	45	68	32	25	60	0.6	1.0	7	127	640	400
GE50ES	GE50ES 2RS	50	75	35	28	66	0.6	1.0	6	156	780	540
GE60ES	GE60ES 2RS	60	90	44	36	80	1.0	1.0	6	245	1220	1000
GE70ES	GE70ES 2RS	70	105	49	40	92	1.0	1.0	6	315	1560	1500
GE80ES	GE80ES 2RS	80	120	55	45	105	1.0	1.0	6	400	2000	2200
GE90ES	GE90ES 2RS	90	130	60	50	115	1.0	1.0	5	490	2450	2700
GE100ES	GE100ES 2RS	100	150	70	55	130	1.0	1.0	7	610	3050	4300
GE110ES	GE110ES 2RS	110	160	70	55	140	1.0	1.0	6	655	3250	4700
GE120ES	GE120ES 2RS	120	180	85	70	160	1.0	1.0	6	950	4750	8000
GE140ES	GE140ES 2RS	140	210	90	70	180	1.0	1.0	7	1080	5400	11000
GE160ES	GE160ES 2RS	160	230	105	80	200	1.0	1.0	8	1360	6800	14000

GEG..E(S),GEG..ES 2RS



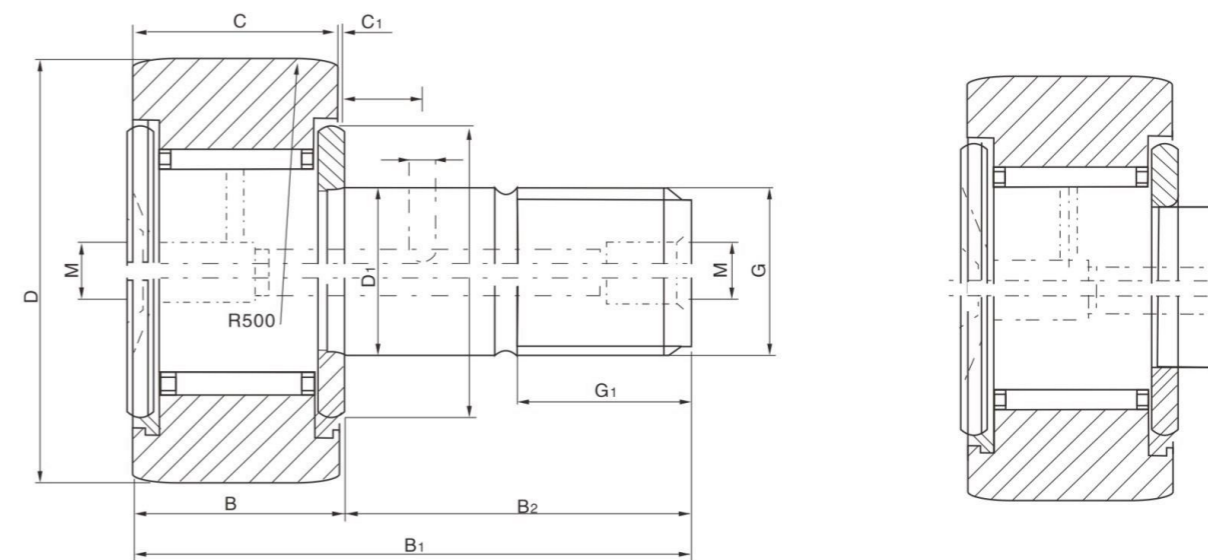
Maintenance required.heavy-duty

- 外圈有一道轴向峰
Outer ring with single split in axial direction
- ES 型内圈和外圈有润滑油槽和油孔
Lubricating grooves and holes in the outer and inner rings of type ES
- 2RS 型外圈两面带密封圈
Outer ring of type-2RS with lip seals in both side
- 内外圈表面磷化处理
Both outer and inner rings are properly phosphate treated

型号 Part Number	尺寸mm (Dimensions)									负荷 Load ratings		重量 g Weight
	d	D	B	C	D _k	R _{1s} _{min}	R _{2s} _{min}	α	动dyn.c	静stat.co		
GEG6E	6	16	9	5	13	0.3	0.3	21	5.50	27.5	8	
GEG8E	8	19	11	6	16	0.3	0.3	21	8.15	40.5	14	
GEG10E	10	22	12	7	18	0.3	0.3	18	10.8	54.0	20	
GEG12E	12	26	15	9	22	0.3	0.3	18	17.0	85.0	34	
GEG15ES	GEG15ES 2RS	15	30	16	10	25	0.3	0.3	16	21.2	106	46
GEG17ES	GEG17ES 2RS	17	35	20	12	29	0.3	0.3	19	30.0	146	78
GEG20ES	GEG20ES 2RS	20	42	25	16	35.5	0.6	0.6	17	48.0	240	150
GEG25ES	GEG25ES 2RS	25	47	28	18	40.7	0.6	0.6	17	62.0	310	190
GEG30ES	GEG30ES 2RS	30	55	32	20	47	0.6	1.0	17	80.0	400	290
GEG35ES	GEG35ES 2RS	35	62	35	22	53	0.6	1.0	16	100	500	390
GEG40ES	GEG40ES 2RS	40	68	40	25	60	0.6	1.0	17	127	640	520
GEG45ES	GEG45ES 2RS	45	75	43	28	66	0.6	1.0	15	156	780	680
GEG50ES	GEG50ES 2RS	50	90	56	36	80	0.6	1.0	17	245	1220	1400
GEG60ES	GEG60ES 2RS	60	105	63	40	92	1.0	1.0	17	315	1560	2000
GEG70ES	GEG70ES 2RS	70	120	70	45	105	1.0	1.0	16	400	2000	2900
GEG80ES	GEG80ES 2RS	80	130	75	50	115	1.0	1.0	14	490	2450	3500
GEG90ES	GEG90ES 2RS	90	150	85	55	130	1.0	1.0	15	610	3050	5400
GEG100ES	GEG100ES 2RS	100	160	85	55	140	1.0	1.0	14	655	3250	5900
GEG110ES	GEG110ES 2RS	110	180	100	70	160	1.0	1.0	11	950	4750	1100
GEG120ES	GEG120ES 2RS	120	210	115	70	180	1.0	1.0	16	1080	5400	1500

滚轮滚针轴承系列
 Wheel and pin bearing series

KR KRV



轴承型号 Designation		尺寸 Dimensions (mm)										
		D*	C	D ₁	D ₁	G ₁	B max	B ₁ max	B ₂	B ₃	C ₁	rs min
KR13	KRV13	13	9	5	M5x0.8	7	10	23	13		0.5	0.3
KR16	KRV16	16	11	6	M6x1	8	12.2	28.2	16		0.6	0.3
KR19	KRV19	19	11	8	M8x1.25	10	12.2	32.2	20		0.6	0.3
KR22	KRV22	22	12	10	M10x1.25	12	13.2	36.2	23		0.6	0.3
KR26	KRV26	26	12	10	M10x1.25	12	13.2	36.2	23		0.6	0.3
KR30	KRV30	30	14	12	M12x1.5	13	15.2	40.2	25	6	0.6	0.6
KR32	KRV32	32	14	12	M12x1.5	13	15.2	40.2	25	6	0.6	0.6
KR35	KRV35	35	18	16	M16x1.5	17	19.6	52.1	32.5	8	0.8	0.6
KR40	KRV40	40	20	18	M18x1.5	19	21.6	58.2	36.5	8	0.8	1
KR47	KRV47	47	24	20	M20x1.5	21	25.6	66.1	40.5	9	0.8	1
KR52	KRV52	52	24	20	M20x1.5	21	25.6	66.1	40.5	9	0.8	1
KR62	KRV62	62	29	24	M24x1.5	25	30.6	80.1	49.5	11	0.8	1
KR72	KRV72	72	29	24	M24x1.5	25	30.6	80.1	49.5	11	0.8	1
KR80	KRV80	80	35	30	M30x1.5	32	37	100	63	15	1	1
KR85	KRV85	85	35	30	M30x1.5	32	37	100	63	15	1	1
KR90	KRV90	90	35	30	M30x1.5	32	37	100	63	15	1	1

注：KR, KRV系列型轴承带偏心套，则型号为KRE, KRVE。
 Note: when bearing of series KR, KRV with eccentric, then designation of bearing KRE, KRVE.

偏心量 Eccentric (e)	额定负荷 Basic load rating		极限转速 Limits of speed (rpm)	质量 Mass (g)	ZNT旧代号 ZNT old designation		IKO型号 Designation
	动负荷 Dynamic C	静负荷 Static Co					
0.25	280	180	29000	16	NAKD13	NAKD13V	CF5
0.25	270	170	25000	18	NAKD16	NAKD16V	CF6
0.25	300	210	20000	28	NAKD19	NAKD19V	CF8
0.3	410	320	17000	44	NAKD22	NAKD22V	CF10
0.3	410	320	17000	58	NAKD26	NAKD26V	CF10-1
0.3	590	450	14000	87	NAKD30	NAKD30V	CF12
0.3	590	450	14000	90	NAKD32	NAKD32V	CF12-1
0.35	850	760	10000	169	NAKD35	NAKD35V	CF16
0.35	1180	1220	8500	247	NAKD40	NAKD40V	CF18
0.35	1630	1690	7000	386	NAKD47	NAKD47V	CF20
0.35	1630	1690	7000	461	NAKD52	NAKD52V	CF20-1
0.4	2160	2210	6500	790	NAKD62	NAKD62V	CF24
0.4	2160	2210	6500	1040	NAKD72	NAKD72V	CF24-1
0.5	2830	3700	5000	1550	NAKD80	NAKD80V	CF30
0.5	2830	3700	5000	1740	NAKD85	NAKD85V	CF30-1
0.5	2830	3700	5000	1950	NAKD90	NAKD90V	CF30-2

注：*外表面可为圆柱面或球面。**倒角尺寸极限由产品设计决定。
 Note: *outersurface can be cylinder of spherical, **Limits of chamfer depend on the design.